



**CAB342Hu22**

**Anti-Actin Alpha 2, Smooth Muscle (ACTa2) Monoclonal Antibody**

**Organism Species: *Homo sapiens* (Human)**

***Instruction manual***

FOR RESEARCH USE ONLY

NOT FOR USE IN CLINICAL DIAGNOSTIC PROCEDURES

---

---

13th Edition (Revised in Aug, 2023)

## **[ PROPERTIES ]**

**Source:** Monoclonal antibody preparation

**Host:** Mouse

**Purification:** Protein A+G Affinity Chromatography.

**Clone number:** E3

**Traits:** Liquid

**Concentration:** 1mg/ml

**UOM:** 100µl

**Applications:** Loading Control of WB.

## **[ IMMUNOGEN ]**

**Immunogen:** Recombinant ACTa2 (Ile167~Phe377) expressed in *E.coli*.

**Accession No.:** RPB342Mi01

## **[ ORGANISM SPECIES MORE ]**

**React with:** human, mouse, rat, cavia, ovine, canine, porcine, equine, gallus, and bovine;

Other species have not been detected.

## **[ APPLICATIONS ]**

Western blotting: 0.5-5µg/ml:1:500-5000

Optimal working dilutions must be determined by end user.

## **[ FORMULATION ]**

**Form & Buffer:** Supplied as solution form in 0.01M PBS, pH7.4, containing 0.02% NaN<sub>3</sub>, 50% glycerol.

## **[ STORAGE AND STABILITY ]**

**Storage:** Avoid repeated freeze/thaw cycles.

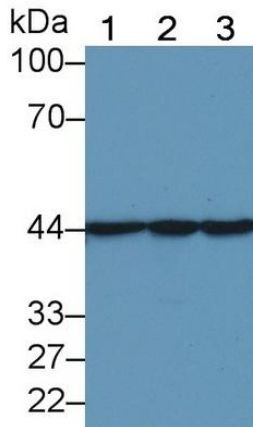
Store at 4°C for frequent use.

Aliquot and store at -20°C for 24 months.

**Stability Test:** The thermal stability is described by the loss rate. The loss rate

was determined by accelerated thermal degradation test, that is, incubate the protein at 37°C for 48h, and no obvious degradation and precipitation were observed. The loss rate is less than 5% within the expiration date under appropriate storage condition.

### **[ IDENTIFICATION ]**



Western Blot; Sample:

Lane1: Rat Heart lysate;

Lane2: Rat Cerebrum lysate;

Lane3: Rat Skeletal muscle lysate

Primary Ab: 2 $\mu$ g/ml Mouse Anti-Human ACTa2 Antibody

Second Ab: 0.2 $\mu$ g/mL HRP-Linked Caprine Anti-Mouse IgG Polyclonal Antibody  
(Catalog: SAA544Mu19)

### **[ Important Note ]**

The kit is designed for in vitro and research use only, we will not be responsible for any issue if the kit was used in clinical diagnostic or any other procedures.



*Cloud-Clone Corp.*