

**EPB028Hu51 100µg**

**Eukaryotic Albumin (ALB)**

**Organism Species: *Homo sapiens (Human)***

***Instruction manual***

FOR RESEARCH USE ONLY

NOT FOR USE IN CLINICAL DIAGNOSTIC PROCEDURES

---

13th Edition (Revised in Aug, 2023)

**[ PROPERTIES ]**

**Source:** Eukaryotic expression

**Host:** Yeast

**Residues:** Asp25~Leu609

**Tags:** N-terminal His Tag

**Subcellular Location:** Secreted

**Purity:** > 95%

**Traits:** Freeze-dried powder

**Buffer formulation:** PBS, pH7.4, containing 0.01% Sarcosyl, 1mM DTT, 5% Trehalose and Proclin300.

**Original Concentration:** 200µg/mL

**Applications:** Positive Control; Immunogen; SDS-PAGE; WB.

(May be suitable for use in other assays to be determined by the end user.)

**Predicted isoelectric point:** 5.7

**Predicted Molecular Mass:** 66.5kDa

**Accurate Molecular Mass:** 66kDa as determined by SDS-PAGE reducing conditions.

**[ USAGE ]**

Reconstitute in 10mM PBS (pH7.4) to a concentration of 0.1-1.0 mg/mL. Do not vortex.

**[ STORAGE AND STABILITY ]**

**Storage:** Avoid repeated freeze/thaw cycles.

Store at 2-8°C for one month.

Aliquot and store at -80°C for 12 months.

**Stability Test:** The thermal stability is described by the loss rate. The loss rate was determined by accelerated thermal degradation test, that is, incubate the protein at 37°C for 48h, and no obvious degradation and precipitation were observed. The loss rate is less than 5% within the expiration date under appropriate storage condition.

**[ SEQUENCE ]**

DAHKSE VAHRFKDLGE ENFKALVLIA  
 FAQYLQQCPF EDHVKLVNEV TEFAKTCVAD ESAENCDKSL HTLFGDKLCT  
 VATLRETYGE MADCCAKQEP ERNECFLQHK DDNPNLPRLV RPEVDVMCTA  
 FHDNEETFLK KYLYEIARRH PYFYAPELLF FAKRYKAAFT ECCQAADKAA  
 CLLPKLDEL R DEGKASSAKQ RLKCASLQKF GERAFAKAWAV ARLSQRFPA  
 EFAEVSKLVT DLTKVHTECC HGDLLLECADD RADLAKYICE NQDSISSKLLK  
 ECCEKPLLEK SHCIAEVEND EMPADLPSLA ADFVESKDVC KNYAEAKDVF  
 LGMFLYEYAR RHPDYSVLL LRLAKTYETT LEKCCAAADP HECYAKVFDE  
 FKPLVEEPQN LIKQNCLEFE QLGEYKFQNA LLVRYTKKVP QVSTPTLVEV  
 SRNLGKVGSK CCKHPEAKRM PCAEDYLSVV LNQLCVLHEK TPVSDRVTKC  
 CTESLVNRRP CFSALEVDET YVPKEFNAET FTFHADICTL SEKERQIKKQ  
 TALVELVKHK PKATKEQLKA VMDDFAAFVE KCKKADDKET CFAEEGKKLV  
 AASQAALGL

**[ IDENTIFICATION ]**

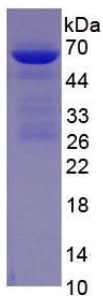


Figure. SDS-PAGE

**[ IMPORTANT NOTE ]**

The kit is designed for research use only, we will not be responsible for any issue if the kit was used in clinical diagnostic or any other procedures.