

EPP807Hu61 10µg

Eukaryotic Poly ADP Ribose Glycohydrolase (PARG)

Organism Species: *Homo sapiens (Human)*

Instruction manual

FOR RESEARCH USE ONLY

NOT FOR USE IN CLINICAL DIAGNOSTIC PROCEDURES

13th Edition (Revised in Aug, 2023)

[PROPERTIES]

Source: Eukaryotic expression

Host: 293F cell

Residues: Ser448~Thr976

Tags: N-terminal His Tag

Subcellular Location: Nucleus, Cytoplasm

Purity: > 90%

Traits: Freeze-dried powder

Buffer formulation: PBS, pH7.4, containing 5% Trehalose.

Original Concentration: 50µg/mL

Applications: Positive Control; Immunogen; SDS-PAGE; WB.

(May be suitable for use in other assays to be determined by the end user.)

Predicted isoelectric point: 6.4

Predicted Molecular Mass: 62.7kDa

Accurate Molecular Mass: 72kDa as determined by SDS-PAGE reducing conditions.

Phenomenon explanation:

The possible reasons that the actual band size differs from the predicted are as follows:

1. Splice variants: Alternative splicing may create different sized proteins from the same gene.
2. Relative charge: The composition of amino acids may affect the charge of the protein.
3. Post-translational modification: Phosphorylation, glycosylation, methylation etc.
4. Post-translation cleavage: Many proteins are synthesized as pro-proteins, and then cleaved to give the active form.
5. Polymerization of the target protein: Dimerization, multimerization etc.

[USAGE]

Reconstitute in ddH₂O to a concentration of 0.1-0.2 mg/mL. Do not vortex.

[STORAGE AND STABILITY]

Storage: Avoid repeated freeze/thaw cycles.

Store at 2-8°C for one month.

Aliquot and store at -80°C for 12 months.

Stability Test: The thermal stability is described by the loss rate. The loss rate was determined by accelerated thermal degradation test, that is, incubate the protein at 37°C for 48h, and no obvious degradation and precipitation were observed. The loss rate is less than 5% within the expiration date under appropriate storage condition.

[SEQUENCE]

SPD

KKWLGTPIEE MRRMPCGIR LPLLPSANH TVTIRVDLLR AGEVPKPFPT
 HYKDLWDNKH VKMPCSEQNL YPVEDENGER TAGSRWELIQ TALLNKFTRP
 QNLKDAILKY NVAYSKKWDF TALIDFWDKV LEEAEAQHLY QSILPDMVKI
 ALCLPNICTQ PIPLLKQKMN HSITMSQEIQ ASLLANAFFC TFPRRNAKMK
 SEYSSYPDIN FNRLFEGRSS RKPEKLTFLF CYFRRVTEKK PTGLVTFTRQ
 SLEDFPEWER CEKPLTRLHV TYEGTIEENG QGMLQVDFAN RFVGGGV TSA
 GLVQEEIRFL INPELIISRL FTEVL D HNEC LIITGTEQYS EYTGYAETYR
 WSRSHEDGSE RDDWQRRCTE IVAIDALHFR RYLDQFVPEK MRRELNKAYC
 GFLRPGVSSE NLSAVATGNW GCGAFGGDAR LKALIQILAA AAAERDVVYF
 TFGDSELMRD IYSMHIFLTE RKLTVGDVYK LLLRYYNEEC RNCSTPGPDI
 KLYPFIYHAV ESCAETADHS QRTGT

[IDENTIFICATION]

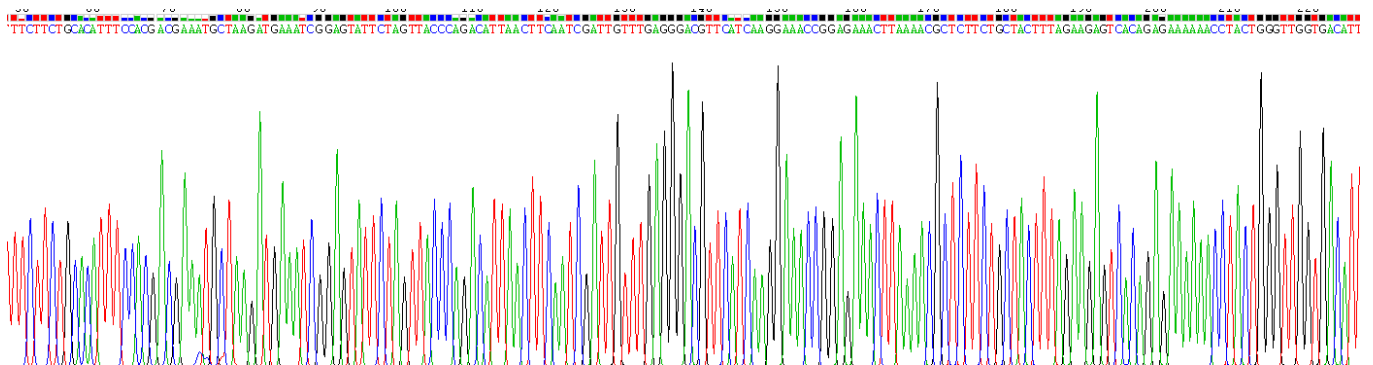


Figure . Gene Sequencing (extract)

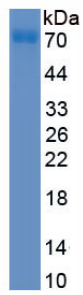


Figure. SDS-PAGE

[IMPORTANT NOTE]

The kit is designed for research use only, we will not be responsible for any issue if the kit was used in clinical diagnostic or any other procedures.