



SAA544Hu09

HRP-Linked Rabbit Anti-Human IgG Polyclonal Antibody

Organism Species: *Homo sapiens* (Human)

Instruction manual

FOR RESEARCH USE ONLY

NOT FOR USE IN CLINICAL DIAGNOSTIC PROCEDURES

13th Edition (Revised in Aug, 2023)

[PROPERTIES]

Source: Antibody labeling

Host: Rabbit

Purification: Antigen-specific Affinity Chromatography.

Label: HRP

Traits: Liquid

Concentration: 1.4mg/mL

UOM: 1mL

Applications: ELISA; WB; IHC; ICC.

[IMMUNOGEN]

Immunogen: IgG, Human

[APPLICATIONS]

ELISA: 1:1000-10000

Western blotting: 1:1000-10000

Immunohistochemistry: 1:200-2000

Immunocytochemistry: 1:200-2000

Optimal working dilutions must be determined by end user.

[FORMULATION]

Form & Buffer: Supplied as solution form in PBS, pH7.4, 50% glycerol; 0.05% Proclin-300 .

[STORAGE AND STABILITY]

Storage: Avoid repeated freeze/thaw cycles.

Store at 4°C for frequent use.

Aliquot and store at -20°C for 24 months.

Stability Test: The thermal stability is described by the loss rate. The loss rate was determined by accelerated thermal degradation test, that is, incubate the protein at 37°C for 48h, and no obvious degradation and precipitation were observed. The loss rate is less than 5% within the expiration date under

appropriate storage condition.

[IDENTIFICATION]

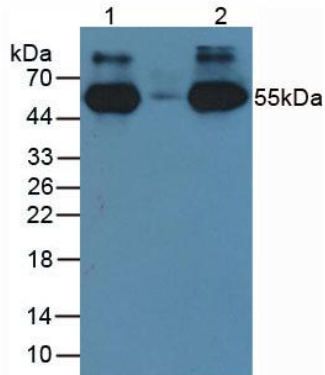


Figure1: Used in Western Blot, Sample: Native Human IgG Protein

Ab: 1:2000 Dilution of HRP-Linked Rabbit Anti-Human IgG Ab (Catalog: SAA544Hu09)

[Important Note]

The kit is designed for in vitro and research use only, we will not be responsible for any issue if the kit was used in clinical diagnostic or any other procedures.



Cloud-Clone Corp.