

RPD709Hu01 100µg

Recombinant Killer Cell Immunoglobulin Like Receptor 2DL3 (KIR2DL3)

Organism Species: Homo sapiens (Human)

Instruction manual

FOR IN VITRO USE AND RESEARCH USE ONLY

NOT FOR USE IN CLINICAL DIAGNOSTIC PROCEDURES

9th Edition (Revised in Jul, 2013)

[PROPERTIES]

Residues: His22~Pro341 (Accession # P43628),
with two N-terminal Tags, His-tag and GST-tag.

Host: *E. coli*

Subcellular Location: Cell membrane;
Single-pass type I membrane protein.

Purity: >95%

Endotoxin Level: <1.0EU per 1µg
(determined by the LAL method).

Formulation: Supplied as lyophilized form in 20mM Tris,
500mM NaCl, pH8.0, containing 1mM EDTA, 0.01%
sarcosyl, 5% trehalose, and preservative.

Predicted isoelectric point: 6.2

Predicted Molecular Mass: 67.3kDa

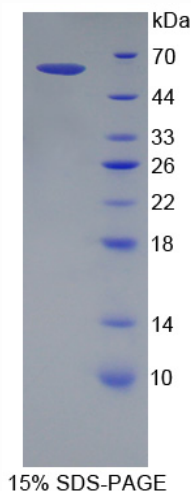
Accurate Molecular Mass: 60kDa as determined by SDS-PAGE reducing conditions.

Applications: SDS-PAGE; WB; ELISA; IP.

(May be suitable for use in other assays to be determined by the end user.)

Note: The possible reasons that the actual band size differs from the predicted are as follows:

1. Splice variants: Alternative splicing may create different sized proteins from the same gene.
2. Relative charge: The composition of amino acids may affects the charge of the protein.
3. Post-translational modification: Phosphorylation, glycosylation, methylation etc.
4. Post-translation cleavage: Many proteins are synthesized as pro-proteins, and then cleaved to give the active form.
5. Polymerization of the target protein: Dimerization, multimerization etc.



[USAGE]

Reconstitute in sterile PBS, pH7.2-pH7.4.

[STORAGE AND STABILITY]

Storage: Avoid repeated freeze/thaw cycles.

Store at 2-8°C for one month.

Aliquot and store at -80°C for 12 months.

Stability Test: The thermal stability is described by the loss rate of the target protein. The loss rate was determined by accelerated thermal degradation test, that is, incubate the protein at 37°C for 48h, and no obvious degradation and precipitation were observed. (Referring from China Biological Products Standard, which was calculated by the Arrhenius equation.) The loss of this protein is less than 5% within the expiration date under appropriate storage condition.

[SEQUENCES]

The target protein is fused with two N-terminal Tags, His-tag and GST-tag, its sequence is listed below.

MSPILGYWKI KGLVQPTRL L LEYLEEKYEE HLYERDEGDK WRNKKFELGL EFPNLPYYID
GDVKLTQSMA IIRYIADKHN MLGGCPKERA EISMLEGAVL DIRYGVSRIA YSKDFETLKV
DFLSKLPEML KMFEDRLCHK TYLNGDHVTH PDFMLYDALD VVLYMDPMCL DAFPKLVCFK
KRIEAIQID KYLKSSKYIA WPLQGWQATF GGGDHPKSD GSTSGSGHHH HHHSAGLVPR
GSTAIGMKET AAKFERQHM DSPDLGTLEV LFQGPLGS- HEGVHRKPS LLAHPGPLVK
SEETVILQCW SDVRFQHFLL HREGKFKDTL HLIGEHHGV SKANFSIGPM MQDLAGTYRC
YGSVTHSPYQ LSAPSDPLDI VITGLYEKPS LSAQPGPTVL AGESVTLSCS SRSSYDMYHL
SREGAEHERR FSAGPKVNGT FQADFPLGPA THGGTYRCFG SFRDSPYEWS
NSSDLLVSV TGNPSNSWPS PTEPSSETGN PRHLHVLIGT SVVILFILL LFFLLHRWCC
NKKNVMDQ EPAGNRTVNR EDSDEQDPQE VTYAQLNHCV FTQRKITRPS QRPKTPPTDI
IVYTELPNAE P

[REFERENCES]

1. Colonna M., Samaridis J. (1995) Science 268:405-408.
2. Maenaka K., *et al.* (1999) Structure 7:391-398.
3. Yu M.-C., *et al.* (2008) Nat. Immunol. 9:898-907.
4. Wilson M.J., *et al.* (1997) Tissue Antigens 49:574-579.