

**MAA946Hu21**

**Monoclonal Antibody to Amyloid Beta Peptide 1-42 (Ab1-42)**

**Organism Species: *Homo sapiens* (Human)**

***Instruction manual***

FOR RESEARCH USE ONLY

NOT FOR USE IN CLINICAL DIAGNOSTIC PROCEDURES

---

13th Edition (Revised in Aug, 2023)

**[ PROPERTIES ]**

**Source:** Monoclonal antibody preparation

**Host:** Mouse

**Antibody isotype:** IgG2a Kappa

**Purification:** Protein A + Protein G affinity chromatography

**Clone number:** C5

**Traits:** Liquid

**Concentration:** 1mg/mL

**UOM:** 20µL

**Cross Reactivity:** N/A

**Applications:** WB; IHC

**[ IMMUNOGEN ]**

**Immunogen:** Synthetic Peptide, Ab1-42 conjugated to OVA. Target peptide sequence: SNKGAIIGLMVGGVVIA.

**Accession No.:** CPA946Hu21

**[ APPLICATIONS ]**

Western blotting: 0.01-3µg/mL;

Immunohistochemistry: 5-30µg/mL;

Optimal working dilutions must be determined by end user.

**[ FORMULATION ]**

**Form & Buffer:** Supplied as solution form in PBS, pH7.4, containing 0.02% NaN<sub>3</sub>, 50% glycerol.

**[ STORAGE AND STABILITY ]**

**Storage:** Avoid repeated freeze/thaw cycles.

Store at 4°C for frequent use.

Aliquot and store at -20°C for 24 months.

**Stability Test:** The thermal stability is described by the loss rate. The loss rate was determined

by accelerated thermal degradation test, that is, incubate the protein at 37°C for 48h, and no obvious degradation and precipitation were observed. The loss rate is less than 5% within the expiration date under appropriate storage condition.

**[ IDENTIFICATION ]**

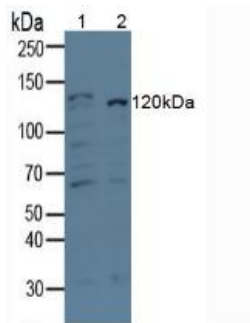
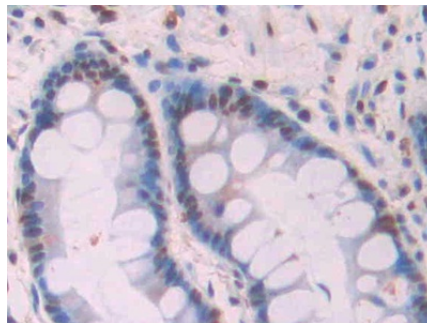
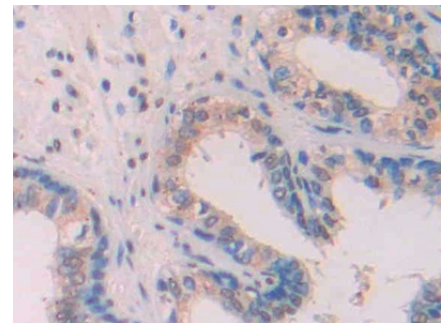


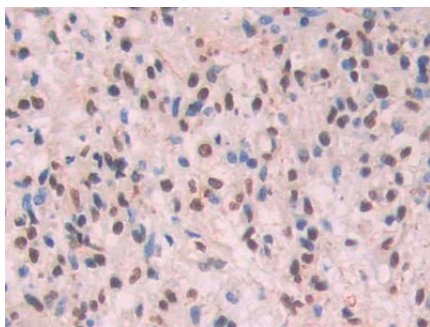
Figure. Western Blot. Samples: Lane1: Human HeLa Cells; Lane2: Human 293T Cells.



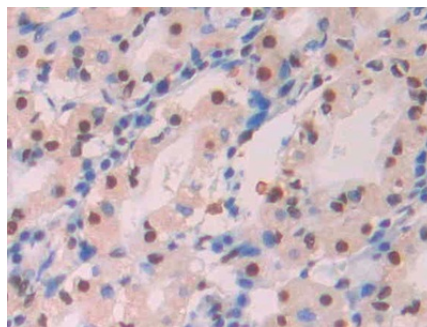
DAB staining on IHC-P; Samples: Human Stomach cancer Tissue; Primary Ab: 30µg/ml Mouse Anti-Multi-species Ab1-42 Antibody Second Ab: 2µg/mL HRP-Linked Caprine Anti-Mouse IgG Polyclonal Antibody (Catalog: SAA544Mu19)



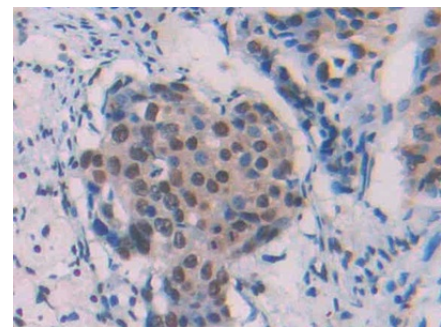
DAB staining on IHC-P; Samples: Human Prostate Tissue; Primary Ab: 30µg/ml Mouse Anti-Multi-species Ab1-42 Antibody Second Ab: 2µg/mL HRP-Linked Caprine Anti-Mouse IgG Polyclonal Antibody (Catalog: SAA544Mu19)



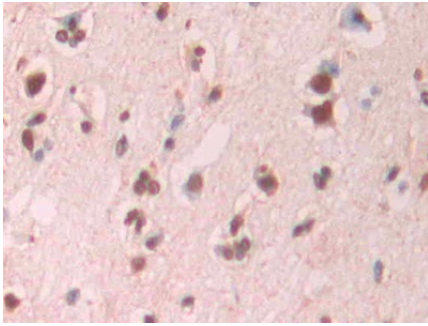
DAB staining on IHC-P; Samples: Human Glioma Tissue; Primary Ab: 30µg/ml Mouse Anti-Multi-species Ab1-42 Antibody Second Ab: 2µg/mL HRP-Linked Caprine Anti-Mouse IgG Polyclonal Antibody (Catalog: SAA544Mu19)



DAB staining on IHC-P; Samples: Human Stomach Tissue; Primary Ab: 30µg/ml Mouse Anti-Multi-species Ab1-42 Antibody Second Ab: 2µg/mL HRP-Linked Caprine Anti-Mouse IgG Polyclonal Antibody (Catalog: SAA544Mu19)



DAB staining on IHC-P; Samples: Human Lung Tissue; Primary Ab: 30µg/ml Mouse Anti-Multi-species Ab1-42 Antibody Second Ab: 2µg/mL HRP-Linked Caprine Anti-Mouse IgG Polyclonal Antibody (Catalog: SAA544Mu19)



DAB staining on IHC-P;

Samples: Human Cerebrum Tissue;

Primary Ab: 30 $\mu$ g/ml Mouse Anti-Multi-  
species Ab1-42 Antibody

Second Ab: 2 $\mu$ g/mL HRP-Linked

Caprine Anti-Mouse IgG Polyclonal  
Antibody

(Catalog: SAA544Mu19)

### **[ IMPORTANT NOTE ]**

The kit is designed for research use only, we will not be responsible for any issue if the kit was used in clinical diagnostic or any other procedures.