

MAA260Ra21

Monoclonal Antibody to Beta-2-Microglobulin (b2M)

Organism Species: *Rattus norvegicus* (Rat)

Instruction manual

FOR RESEARCH USE ONLY

NOT FOR USE IN CLINICAL DIAGNOSTIC PROCEDURES

13th Edition (Revised in Aug, 2023)

[PROPERTIES]

Source: Monoclonal antibody preparation

Host: Mouse

Antibody isotype: IgG2b Kappa

Purification: Protein A + Protein G affinity chromatography

Clone number: 17#

Traits: Liquid

Concentration: 1mg/mL

UOM: 100µL

Cross Reactivity: Mouse

Applications: WB; ICC/IF

[IMMUNOGEN]

Immunogen: Recombinant b2M (Ile21~Met119 (Accession # P07151)) expressed in *E.coli*

Accession No.: RPA260Ra01

[APPLICATIONS]

Western blotting: 0.01-2µg/mL;

Immunofluorescence: 5-20µg/mL;

Optimal working dilutions must be determined by end user.

[FORMULATION]

Form & Buffer: Supplied as solution form in 0.01M PBS, pH7.4, containing 0.05% Proclin-300, 50% glycerol.

[STORAGE AND STABILITY]

Storage: Avoid repeated freeze/thaw cycles.

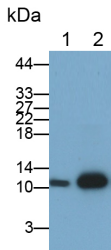
Store at 4°C for frequent use.

Aliquot and store at -20°C for 24 months.

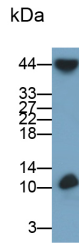
Stability Test: The thermal stability is described by the loss rate. The loss rate was determined by accelerated thermal degradation test, that is, incubate the protein at 37°C for 48h, and no

obvious degradation and precipitation were observed. The loss rate is less than 5% within the expiration date under appropriate storage condition.

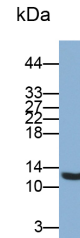
[IDENTIFICATION]



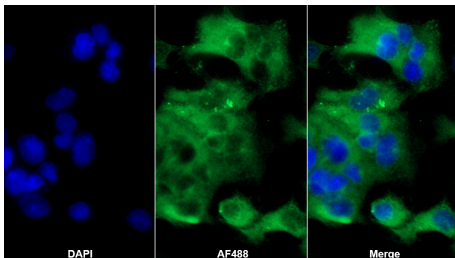
Western Blot; Samples: Lane1: Rat Liver lysate; Lane2: Rat Spleen lysate; Primary Ab: 0.1µg/ml Mouse Anti-Rat b2M Antibody Second Ab: 0.2?g/ml HRP-Linked Caprine Anti-Mouse IgG Polyclonal Antibody (Catalog: SAA544Mu19)



Western Blot; Sample: Rat Serum Primary Ab: 0.1µg/ml Mouse Anti-Rat b2M Antibody Second Ab: 0.2?g/ml HRP-Linked Caprine Anti-Mouse IgG Polyclonal Antibody (Catalog: SAA544Mu19)



Western Blot; Sample: Rat Lung lysate Primary Ab: 0.1µg/ml Mouse Anti-Rat b2M Antibody Second Ab: 0.2µg/ml HRP-Linked Caprine Anti-Mouse IgG Polyclonal Antibody (Catalog: SAA544Mu19)



AF488 staining on IF;

Sample: Hepa1-6 cell

Primary Ab: 20µg/ml Mouse Anti-Rat b2M Antibody Second Ab: 2µg/ml AF488-Linked Caprine Anti-Mouse IgG Polyclonal Antibody (Catalog: SAA544Mu11)

[IMPORTANT NOTE]

The kit is designed for research use only, we will not be responsible for any issue if the kit was

used in clinical diagnostic or any other procedures.