

MAA447Ra28

Monoclonal Antibody to C-Peptide (CP)

Organism Species: *Rattus norvegicus* (Rat)

Instruction manual

FOR RESEARCH USE ONLY

NOT FOR USE IN CLINICAL DIAGNOSTIC PROCEDURES

13th Edition (Revised in Aug, 2023)

[PROPERTIES]

Source: Monoclonal antibody preparation

Host: Mouse

Antibody isotype: IgG2a Kappa

Purification: Protein A + Protein G affinity chromatography

Clone number: C4

Traits: Liquid

Concentration: 1mg/mL

UOM: 100µL

Cross Reactivity: Human

Applications: WB; IHC

[IMMUNOGEN]

Immunogen: Synthetic Peptide, C-Peptide conjugated to KLH. Target peptide sequence:
EVEDPQVPQLELGGGPEAGDLQTLALEARQ.

Accession No.: CPA447Ra31

[APPLICATIONS]

Western blotting: 0.01-2µg/mL;

Immunohistochemistry: 5-20µg/mL;

Optimal working dilutions must be determined by end user.

[FORMULATION]

Form & Buffer: Supplied as solution form in PBS, pH7.4, containing 0.02% NaN₃, 50% glycerol.

[STORAGE AND STABILITY]

Storage: Avoid repeated freeze/thaw cycles.

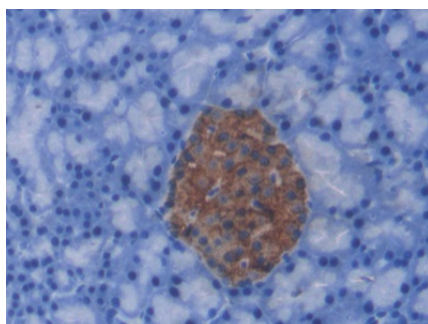
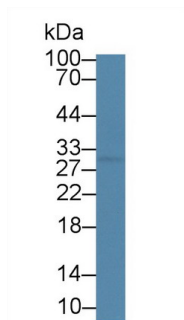
Store at 4°C for frequent use.

Aliquot and store at -20°C for 24 months.

Stability Test: The thermal stability is described by the loss rate. The loss rate was determined

by accelerated thermal degradation test, that is, incubate the protein at 37°C for 48h, and no obvious degradation and precipitation were observed. The loss rate is less than 5% within the expiration date under appropriate storage condition.

[IDENTIFICATION]



Western Blot; Sample: BXP3 cell	DAB staining on IHC-P; Samples: Rat
lysate; Primary Ab: 6µg/ml Mouse Anti-	Pancreas Tissue; Primary Ab: 20µg/ml
Rat C-Peptide Antibody Second Ab:	Mouse Anti-Porcine CP Antibody
0.2µg/mL HRP-Linked Caprine Anti-	Second Ab: 2µg/mL HRP-Linked
Mouse IgG Polyclonal Antibody	Caprine Anti-Mouse IgG Polyclonal
(Catalog: SAA544Mu19)	Antibody (Catalog: SAA544Mu19)

[IMPORTANT NOTE]

The kit is designed for research use only, we will not be responsible for any issue if the kit was used in clinical diagnostic or any other procedures.