

MAB280Hu21

Monoclonal Antibody to Cathepsin D (CTSD)

Organism Species: *Homo sapiens* (Human)

Instruction manual

FOR RESEARCH USE ONLY

NOT FOR USE IN CLINICAL DIAGNOSTIC PROCEDURES

13th Edition (Revised in Aug, 2023)

[PROPERTIES]

Source: Monoclonal antibody preparation

Host: Mouse

Antibody isotype: IgG2b Kappa

Purification: Protein A + Protein G affinity chromatography

Clone number: C11

Traits: Liquid

Concentration: 0.85mg/mL

UOM: 50µg(59µL)

Cross Reactivity: N/A

Applications: ICC/IF

[IMMUNOGEN]

Immunogen: Recombinant CTSD (Leu21~Leu412) expressed in *293F cell*

Accession No.: EPB280Hu61

[APPLICATIONS]

Immunofluorescence: 5-40µg/mL;

Optimal working dilutions must be determined by end user.

[FORMULATION]

Form & Buffer: Supplied as solution form in 0.01M PBS, pH7.4, containing 0.05% Proclin-300, 50% glycerol.

[STORAGE AND STABILITY]

Storage: Avoid repeated freeze/thaw cycles.

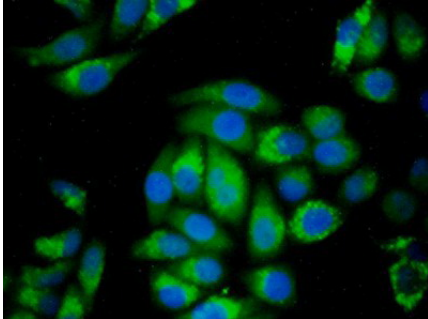
Store at 4°C for frequent use.

Aliquot and store at -20°C for 24 months.

Stability Test: The thermal stability is described by the loss rate. The loss rate was determined by accelerated thermal degradation test, that is, incubate the protein at 37°C for 48h, and no obvious degradation and precipitation were observed. The loss rate is less than 5% within the

expiration date under appropriate storage condition.

[IDENTIFICATION]



FITC staining on IF; Sample: Human
MCF7 cell; Primary Ab: 40 μ g/ml Mouse
Anti-Human CTSD Antibody Second
Ab: 1 μ g/ml FITC-Linked Caprine Anti-
Mouse IgG Polyclonal Antibody
(Catalog: SAA544Mu18)

[IMPORTANT NOTE]

The kit is designed for research use only, we will not be responsible for any issue if the kit was used in clinical diagnostic or any other procedures.