

**MAA267Hu22**

**Monoclonal Antibody to Cathepsin K (CTSK)**

**Organism Species: *Homo sapiens (Human)***

***Instruction manual***

FOR RESEARCH USE ONLY

NOT FOR USE IN CLINICAL DIAGNOSTIC PROCEDURES

---

13th Edition (Revised in Aug, 2023)

**[ PROPERTIES ]**

**Source:** Monoclonal antibody preparation

**Host:** Mouse

**Antibody isotype:** IgG2b Kappa

**Purification:** Protein A + Protein G affinity chromatography

**Clone number:** C1

**Traits:** Liquid

**Concentration:** 1mg/mL

**UOM:** 100µL

**Cross Reactivity:** Mouse;Rat;Rabbit;Canine;Porcine;Bovine;Caprine;Ovine;Equine

**Applications:** WB

**[ IMMUNOGEN ]**

**Immunogen:** Recombinant CTSK (Ala115~Met329) expressed in *E.coli*

**Accession No.:** RPA267Hu01

**[ APPLICATIONS ]**

Western blotting: 0.01-3µg/mL;

Optimal working dilutions must be determined by end user.

**[ FORMULATION ]**

**Form & Buffer:** Supplied as solution form in 0.01M PBS, pH7.4, containing 0.05% Proclin-300, 50% glycerol.

**[ STORAGE AND STABILITY ]**

**Storage:** Avoid repeated freeze/thaw cycles.

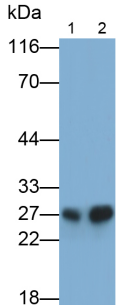
Store at 4°C for frequent use.

Aliquot and store at -20°C for 24 months.

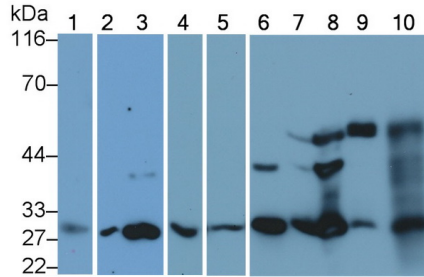
**Stability Test:** The thermal stability is described by the loss rate. The loss rate was determined by accelerated thermal degradation test, that is, incubate the protein at 37°C for 48h, and no obvious degradation and precipitation were observed. The loss rate is less than 5% within the

expiration date under appropriate storage condition.

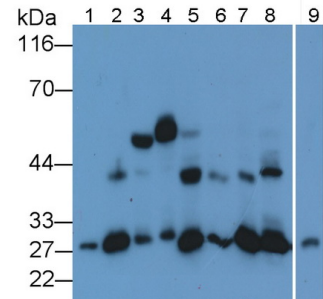
**[ IDENTIFICATION ]**



Western Blot; Samples: Lane1: Rat Skeletal muscle lysate; Lane2: Rat Cartilage lysate; Primary Ab: 0.05µg/ml Mouse Anti-Human CTSK Antibody  
Second Ab: 0.2µg/ml HRP-Linked Caprine Anti-Mouse IgG Polyclonal Antibody (Catalog: SAA544Mu19)



Western Blot; Sample: Lane1: Human Lung lysate; Lane2: Porcine Heart lysate; Lane3: Porcine Uterus lysate; Lane4: Human Cartilage lysate; Lane5: Human Lung lysate; Lane6: Porcine Cartilage lysate; Lane7: Rat Ear lysate; Lane8: Rat Uterus lysate; Lane9: Mouse Cartilage lysate; Lane10: Mouse Uterus lysate  
Primary Ab: 0.2µg/ml Mouse Anti-Human CTSK Antibody  
Second Ab: 0.2µg/mL HRP-Linked Caprine Anti-Mouse IgG Polyclonal Antibody (Catalog: SAA544Mu19)



Western Blot; Sample: Lane1: Human Cartilage lysate; Lane2: Porcine Cartilage lysate; Lane3: Rat Ear lysate; Lane4: Mouse Cartilage lysate; Lane5: Canine Cartilage lysate; Lane6: Bovine Cartilage lysate; Lane7: Caprine Cartilage lysate; Lane8: Rabbit Uterus lysate; Lane9: Equine Lung lysate  
Primary Ab: 0.02µg/ml Mouse Anti-Human CTSK Antibody  
Second Ab: 0.2µg/mL HRP-Linked Caprine Anti-Mouse IgG Polyclonal Antibody (Catalog: SAA544Mu19)

**[ IMPORTANT NOTE ]**

The kit is designed for research use only, we will not be responsible for any issue if the kit was used in clinical diagnostic or any other procedures.