

MAA651Hu25

**Monoclonal Antibody to Complement component 1 Q subcomponent-binding protein,
mitochondrial (C1QBP)**

Organism Species: *Homo sapiens (Human)*

Instruction manual

FOR RESEARCH USE ONLY
NOT FOR USE IN CLINICAL DIAGNOSTIC PROCEDURES

13th Edition (Revised in Aug, 2023)

[PROPERTIES]

Source: Monoclonal antibody preparation

Host: Mouse

Antibody isotype: IgG1 Kappa

Purification: Protein A + Protein G affinity chromatography

Clone number: C4

Traits: Liquid

Concentration: 1mg/mL

UOM: 100µL

Cross Reactivity: Rat;Porcine

Applications: WB; IHC; ICC/IF

[IMMUNOGEN]

Immunogen: Recombinant C1QBP (Thr76~Gln282) expressed in *E.coli*

Accession No.: RPA651Hu01

[APPLICATIONS]

Western blotting: 0.01-3µg/mL;

Imm420µg/mL;

Optimal working dilutions must be determined by end user.

[FORMULATION]

Form & Buffer: Supplied as solution form in 0.01M PBS, pH7.4, containing 0.05% Proclin-300, 50% glycerol.

[STORAGE AND STABILITY]

Storage: Avoid repeated freeze/thaw cycles.

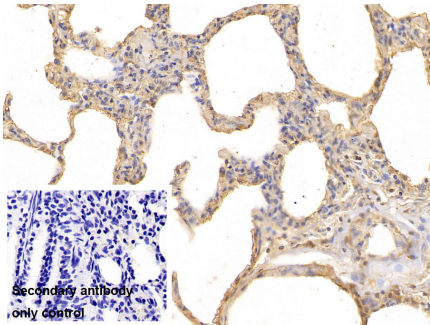
Store at 4°C for frequent use.

Aliquot and store at -20°C for 24 months.

Stability Test: The thermal stability is described by the loss rate. The loss rate was determined by accelerated thermal degradation test, that is, incubate the protein at 37°C for 48h, and no

obvious degradation and precipitation were observed. The loss rate is less than 5% within the expiration date under appropriate storage condition.

[IDENTIFICATION]



DAB staining on IHC-P;

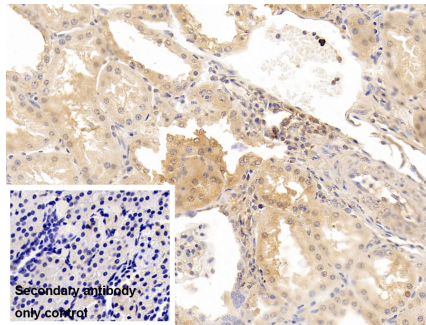
Sample: Porcine Lung Tissue

Primary Ab: 10µg/ml Mouse Anti-Human C1QBP Antibody

Control: Used PBS instead of primary antibody

Second Ab: 2?g/ml HRP-Linked Caprine Anti-Mouse IgG Polyclonal Antibody

(Catalog: SAA544Mu19)



DAB staining on IHC-P;

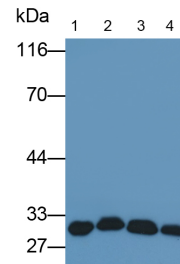
Sample: Porcine Kidney Tissue

Primary Ab: 10µg/ml Mouse Anti-Human C1QBP Antibody

Control: Used PBS instead of primary antibody

Second Ab: 2?g/ml HRP-Linked Caprine Anti-Mouse IgG Polyclonal Antibody

(Catalog: SAA544Mu19)

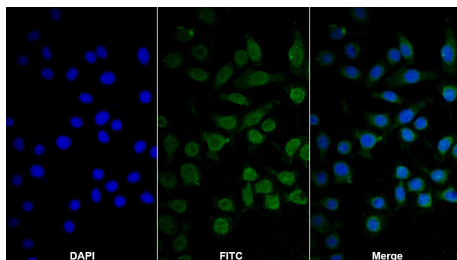


Western Blot; Samples: Lane1: K562 cell lysate; Lane2: Hela cell lysate; Lane3: Rat Cerebrum lysate; Lane4: Rat Liver lysate;

Primary Ab: 3µg/ml Mouse Anti-Human C1QBP Antibody

Second Ab: 0.2?g/ml HRP-Linked Caprine Anti-Mouse IgG Polyclonal Antibody

(Catalog: SAA544Mu19)



FITC staining on IF;

Sample: Hela cell

Primary Ab: 40µg/ml Mouse Anti-Human C1QBP Antibody

Second Ab: 2?g/ml FITC-Linked Caprine Anti-Mouse IgG Polyclonal Antibody

(Catalog: SAA544Mu18)

[IMPORTANT NOTE]

The kit is designed for research use only, we will not be responsible for any issue if the kit was used in clinical diagnostic or any other procedures.