

**MAA851Ge21**

**Monoclonal Antibody to Dopamine (DA)**

**Organism Species: *Pan-species (General)***

***Instruction manual***

FOR RESEARCH USE ONLY

NOT FOR USE IN CLINICAL DIAGNOSTIC PROCEDURES

---

13th Edition (Revised in Aug, 2023)

**[ PROPERTIES ]**

**Source:** Monoclonal antibody preparation

**Host:** Mouse

**Antibody isotype:** N/A

**Purification:** Protein A + Protein G affinity chromatography

**Clone number:** K3

**Traits:** Liquid

**Concentration:** 0.65mg/mL

**UOM:** 100µL

**Cross Reactivity:** N/A

**Applications:** ELISA, CLIA. / IHC-Fr, ICC, IP (predicted).

**[ IMMUNOGEN ]**

**Immunogen:** Small Molecule, Dopamine conjugated to BSA.

**Accession No.:** CPA851Ge11

**[ APPLICATIONS ]**

Immunohistochemistry: 5-20µg/mL;

Immunocytochemistry: 5-20µg/mL;

Optimal working dilutions must be determined by end user.

**[ FORMULATION ]**

**Form & Buffer:** Supplied as solution form in 0.01M PBS, pH7.4, containing 0.05% Proclin-300, 50% glycerol.

**[ STORAGE AND STABILITY ]**

**Storage:** Avoid repeated freeze/thaw cycles.

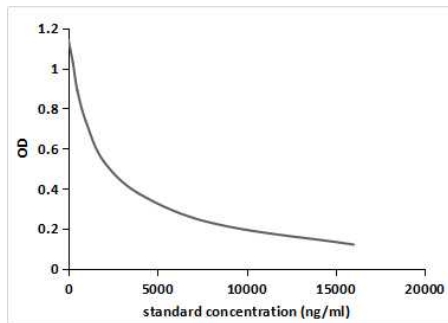
Store at 4°C for frequent use.

Aliquot and store at -20°C for 24 months.

**Stability Test:** The thermal stability is described by the loss rate. The loss rate was determined by accelerated thermal degradation test, that is, incubate the protein at 37°C for 48h, and no

obvious degradation and precipitation were observed. The loss rate is less than 5% within the expiration date under appropriate storage condition.

### **[ IDENTIFICATION ]**



Competitive inhibition ELISA;

Coated protein: DA conjugated to OVA

(Catalog:CPA851Ge21);

Standard:Series Diluted DA;

Primary Ab: 6.51µg/ml Mouse Anti DA

Antibody;

Second Ab: 2µg/mL HRP-Linked

Caprine Anti-mouse IgG

PolyclonalAntibody (Catalog:

SAA544Rb19)

IC50=1000ng/ml

### **[ IMPORTANT NOTE ]**

The kit is designed for research use only, we will not be responsible for any issue if the kit was used in clinical diagnostic or any other procedures.