

MAE641Hu21

Monoclonal Antibody to FK506 Binding Protein 1A (FKBP1A)

Organism Species: *Homo sapiens (Human)*

Instruction manual

FOR RESEARCH USE ONLY

NOT FOR USE IN CLINICAL DIAGNOSTIC PROCEDURES

13th Edition (Revised in Aug, 2023)

[PROPERTIES]

Source: Monoclonal antibody preparation

Host: Mouse

Antibody isotype: IgG1 Kappa

Purification: Protein A + Protein G affinity chromatography

Clone number: E3

Traits: Liquid

Concentration: 1mg/mL

UOM: 100 μ L

Cross Reactivity: Mouse;Rat;Porcine

Applications: WB; IHC

[IMMUNOGEN]

Immunogen: Recombinant FKBP1A (Gly2~Glu108) expressed in *E.coli*

Accession No.: RPE641Hu01

[APPLICATIONS]

Western blotting: 0.01-2 μ g/mL;

Immunohistochemistry: 5-20 μ g/mL;

Optimal working dilutions must be determined by end user.

[FORMULATION]

Form & Buffer: Supplied as solution form in 0.01M PBS, pH7.4, containing 0.05% Proclin-300, 50% glycerol.

[STORAGE AND STABILITY]

Storage: Avoid repeated freeze/thaw cycles.

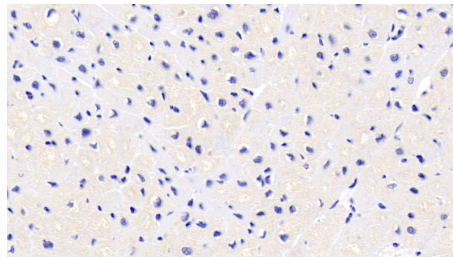
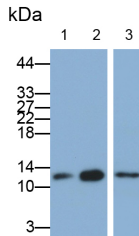
Store at 4°C for frequent use.

Aliquot and store at -20°C for 24 months.

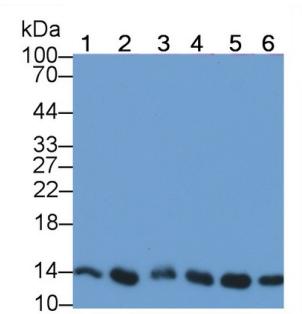
Stability Test: The thermal stability is described by the loss rate. The loss rate was determined by accelerated thermal degradation test, that is, incubate the protein at 37°C for 48h, and no

obvious degradation and precipitation were observed. The loss rate is less than 5% within the expiration date under appropriate storage condition.

[IDENTIFICATION]



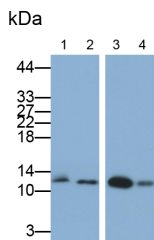
DAB staining on IHC-P; Sample:



Western Blot; Samples: Lane1: C2C12 cell lysate; Lane2: RAW264.7 cell lysate; Lane3: U87MG cell lysate; Primary Ab: 0.2µg/ml Mouse Anti-Human FKBP1A Antibody Second Ab: 0.2µg/ml HRP-Linked Caprine Anti-Mouse IgG Polyclonal Antibody (Catalog: SAA544Mu19)

Human Cardiac Muscle Tissue; Primary Ab: 20µg/ml Mouse Anti-Human FKBP1A Antibody Second Ab: 2µg/mL HRP-Linked Caprine Anti-Mouse IgG Polyclonal Antibody (Catalog: SAA544Mu19)

Western Blot; Sample: Lane1: Human Placenta lysate; Lane2: Porcine Heart lysate; Lane3: Porcine Cerebrum lysate; Lane4: Jurkat cell lysate; Lane5: U937 cell lysate; Lane6: HL60 cell lysate Primary Ab: 2µg/ml Mouse Anti-Human FKBP1A Antibody Second Ab: 0.2µg/mL HRP-Linked Rabbit Anti-Mouse IgG Polyclonal Antibody (Catalog: SAA544Mu19)



Western Blot; Samples: Lane1: Rat Cerebrum lysate; Lane2: PC3 cell lysate; Lane3: HL60 cell lysate; Lane4: SH-SY5Y cell lysate; Primary Ab: 0.2µg/ml Mouse Anti-

Human FKBP1A Antibody

Second Ab: 0.2µg/ml HRP-Linked

Caprine Anti-Mouse IgG Polyclonal
Antibody

(Catalog: SAA544Mu19)

[IMPORTANT NOTE]

The kit is designed for research use only, we will not be responsible for any issue if the kit was used in clinical diagnostic or any other procedures.