

**MAA303Ra21**

**Monoclonal Antibody to Galectin 3 (GAL3)**

**Organism Species: *Rattus norvegicus* (Rat)**

***Instruction manual***

FOR RESEARCH USE ONLY

NOT FOR USE IN CLINICAL DIAGNOSTIC PROCEDURES

---

13th Edition (Revised in Aug, 2023)

**[ PROPERTIES ]**

**Source:** Monoclonal antibody preparation

**Host:** Mouse

**Antibody isotype:** IgG1 Kappa

**Purification:** Protein A + Protein G affinity chromatography

**Clone number:** C2

**Traits:** Liquid

**Concentration:** 1mg/mL

**UOM:** 100µL

**Cross Reactivity:** Human

**Applications:** WB; IHC

**[ IMMUNOGEN ]**

**Immunogen:** Recombinant GAL3 (Met1~Ile262) expressed in *E.coli*

**Accession No.:** RPA303Ra01

**[ APPLICATIONS ]**

Western blotting: 0.01-2µg/mL;

Immunohistochemistry: 5-20µg/mL;

Optimal working dilutions must be determined by end user.

**[ FORMULATION ]**

**Form & Buffer:** Supplied as solution form in 0.01M PBS, pH7.4, containing 0.05% Proclin-300, 50% glycerol.

**[ STORAGE AND STABILITY ]**

**Storage:** Avoid repeated freeze/thaw cycles.

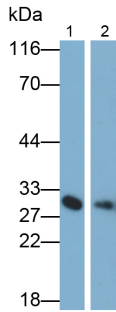
Store at 4°C for frequent use.

Aliquot and store at -20°C for 24 months.

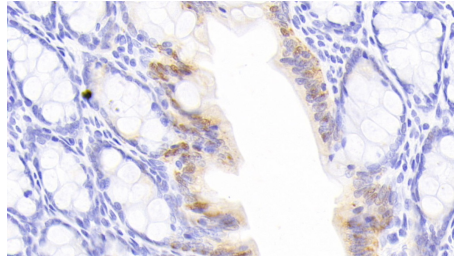
**Stability Test:** The thermal stability is described by the loss rate. The loss rate was determined by accelerated thermal degradation test, that is, incubate the protein at 37°C for 48h, and no

obvious degradation and precipitation were observed. The loss rate is less than 5% within the expiration date under appropriate storage condition.

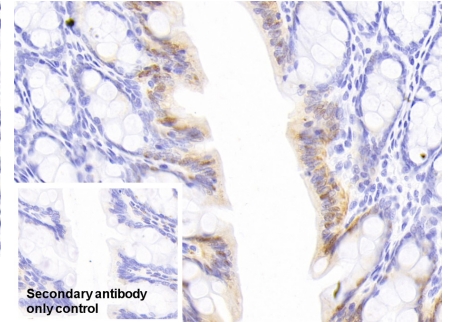
**[ IDENTIFICATION ]**



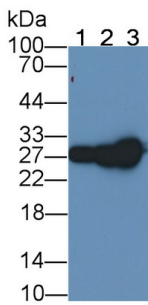
Western Blot; Samples: Lane1: Rat Testis lysate; Lane2: Rat Mammary gland lysate; Primary Ab: 0.3µg/ml Mouse Anti-Rat GAL3 Antibody Second Ab: 0.2µg/ml HRP-Linked Caprine Anti-Mouse IgG Polyclonal Antibody (Catalog: SAA544Mu19)



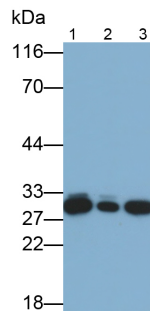
DAB staining on IHC-P; Sample: Rat Colon Tissue; Primary Ab: 20µg/ml Mouse Anti-Rat GAL3 Antibody Second Ab: 2µg/mL HRP-Linked Caprine Anti-Mouse IgG Polyclonal Antibody (Catalog: SAA544Mu19)



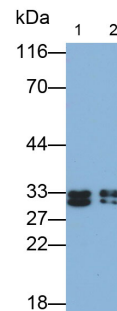
DAB staining on IHC-P; Sample: Rat Colon Tissue Primary Ab: 20µg/ml Mouse Anti-Rat GAL3 Antibody Control: Used PBS instead of primary antibody Second Ab: 2µg/ml HRP-Linked Caprine Anti-Mouse IgG Polyclonal Antibody (Catalog: SAA544Mu19)



Western Blot Sample: Lane1: Rat Lung lysate; Lane2: Rat Testis lysate; Lane3: HeLa cell lysate Primary Ab: 2µg/ml Mouse Anti-Rat GAL3 Antibody Second Ab: 0.2µg/mL HRP-Linked Caprine Anti-Mouse IgG Polyclonal



Western Blot; Samples: Lane1: MCF7 cell lysate; Lane2: A431 cell lysate; Lane3: HeLa cell lysate; Primary Ab: 0.3µg/ml Mouse Anti-Rat GAL3 Antibody Second Ab: 0.2µg/ml HRP-Linked Caprine Anti-Mouse IgG Polyclonal



Western Blot; Samples: Lane1: THP1 cell lysate; Lane2: U2OS cell lysate; Primary Ab: 0.2µg/ml Mouse Anti-Rat GAL3 Antibody Second Ab: 0.2µg/ml HRP-Linked Caprine Anti-Mouse IgG Polyclonal Antibody

Antibody  
(Catalog: SAA544Mu19)

Antibody  
(Catalog: SAA544Mu19)

(Catalog: SAA544Mu19)

**[ IMPORTANT NOTE ]**

The kit is designed for research use only, we will not be responsible for any issue if the kit was used in clinical diagnostic or any other procedures.