

MAA301Bo21

Monoclonal Antibody to Heat Shock 70kDa Protein 1B (HSPA1B)

Organism Species: *Bos taurus*; Bovine (Cattle)

Instruction manual

FOR RESEARCH USE ONLY

NOT FOR USE IN CLINICAL DIAGNOSTIC PROCEDURES

13th Edition (Revised in Aug, 2023)

[PROPERTIES]

Source: Monoclonal antibody preparation

Host: Mouse

Antibody isotype: IgG2b Kappa

Purification: Protein A + Protein G affinity chromatography

Clone number: C4

Traits: Liquid

Concentration: 1mg/mL

UOM: 100 μ L

Cross Reactivity: Human

Applications: WB; IHC

[IMMUNOGEN]

Immunogen: Recombinant HSPA1B (Met1~Asp641) expressed in *E.coli*

Accession No.: RPA301Bo01

[APPLICATIONS]

Western blotting: 0.01-3 μ g/mL

Immunohistochemistry: 5-30 μ g/mL

Optimal working dilutions must be determined by end user.

[FORMULATION]

Form & Buffer: Supplied as solution form in 0.01M PBS, pH7.4, containing 0.05% Proclin-300, 50% glycerol.

[STORAGE AND STABILITY]

Storage: Avoid repeated freeze/thaw cycles.

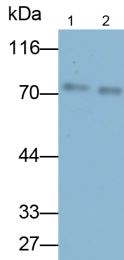
Store at 4°C for frequent use.

Aliquot and store at -20°C for 24 months.

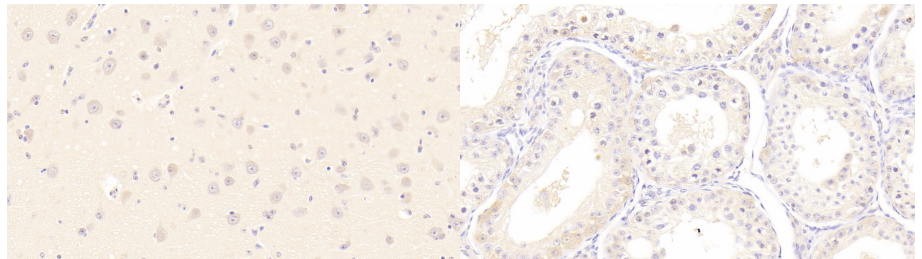
Stability Test: The thermal stability is described by the loss rate. The loss rate was determined by accelerated thermal degradation test, that is, incubate the protein at 37°C for 48h, and no

obvious degradation and precipitation were observed. The loss rate is less than 5% within the expiration date under appropriate storage condition.

[IDENTIFICATION]

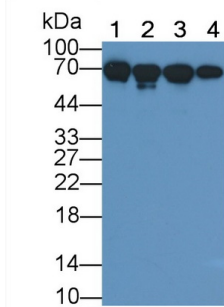


Western Blot; Samples: Lane1: Bovine Heart lysate; Lane2: Bovine Testis lysate; Primary Ab: 0.1µg/ml Mouse Anti-Bovine HSPA1B Antibody Second Ab: 0.2µg/ml HRP-Linked Caprine Anti-Mouse IgG Polyclonal Antibody (Catalog: SAA544Mu19)

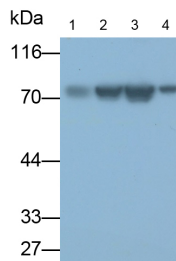


DAB staining on IHC-P; Samples: Bovine Cerebrum Tissue; Primary Ab: 30?g/ml Mouse Anti-Bovine HSPA1B Antibody Second Ab: 2µg/mL HRP-Linked Caprine Anti-Mouse IgG Polyclonal Antibody (Catalog: SAA544Mu19)

DAB staining on IHC-P; Samples: Bovine Testis Tissue; Primary Ab: 30?g/ml Mouse Anti-Bovine HSPA1B Antibody Second Ab: 2µg/mL HRP-Linked Caprine Anti-Mouse IgG Polyclonal Antibody (Catalog: SAA544Mu19)



Western Blot; Sample: Lane1: Bovine Cerebrum lysate; Lane2: Bovine Liver lysate; Lane3: Bovine Kidney lysate; Lane4: MCF7 cell lysate Primary Ab: 2?g/ml Mouse Anti-Bovine HSPA1B Antibody Second Ab: 0.2µg/mL HRP-Linked Caprine Anti-Mouse IgG Polyclonal Antibody (Catalog: SAA544Mu19)



Western Blot; Samples: Lane1: Porcine Liver lysate; Lane2: HeLa cell lysate; Lane3: 293T cell lysate; Lane4: HUH7 cell lysate; Primary Ab: 0.1µg/ml Mouse Anti-Bovine HSPA1B Antibody Second Ab: 0.2µg/ml HRP-Linked Caprine Anti-Mouse IgG Polyclonal Antibody (Catalog: SAA544Mu19)

[IMPORTANT NOTE]

The kit is designed for research use only, we will not be responsible for any issue if the kit was used in clinical diagnostic or any other procedures.