

MAA399Hu22

Monoclonal Antibody to High Mobility Group Protein 1 (HMGB1)

Organism Species: *Homo sapiens (Human)*

Instruction manual

FOR RESEARCH USE ONLY

NOT FOR USE IN CLINICAL DIAGNOSTIC PROCEDURES

13th Edition (Revised in Aug, 2023)

[PROPERTIES]

Source: Monoclonal antibody preparation

Host: Mouse

Antibody isotype: IgG1 Kappa

Purification: Protein A + Protein G affinity chromatography

Clone number: C4

Traits: Liquid

Concentration: 1mg/mL

UOM: 10 μ L

Cross Reactivity: Rat

Applications: WB; ICC/IF

[IMMUNOGEN]

Immunogen: Recombinant HMGB1 (Met1~Glu215) expressed in *E.coli*

Accession No.: RPA399Hu01

[APPLICATIONS]

Western blotting: 0.01-3 μ g/mL;

Immunofluorescence: 5-40 μ g/mL;

Optimal working dilutions must be determined by end user

[FORMULATION]

Form & Buffer: Supplied as solution form in PBS, pH7.4, containing 0.02% NaN₃, 50% glycerol.

[STORAGE AND STABILITY]

Storage: Avoid repeated freeze/thaw cycles.

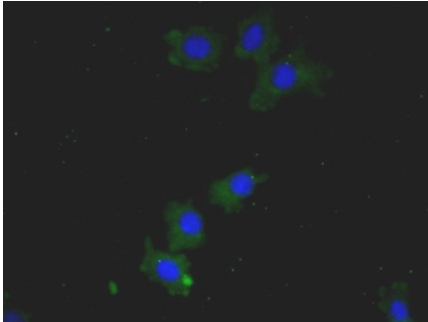
Store at 4°C for frequent use.

Aliquot and store at -20°C for 24 months.

Stability Test: The thermal stability is described by the loss rate. The loss rate was determined by accelerated thermal degradation test, that is, incubate the protein at 37°C for 48h, and no

obvious degradation and precipitation were observed. The loss rate is less than 5% within the expiration date under appropriate storage condition.

[IDENTIFICATION]



FITC staining on IF; Samples: Human HepG2 Cells; Primary Ab: 40µg/ml Mouse Anti-Human HMG1 Antibody
Second Ab: 1µg/ml FITC-Linked Caprine Anti-Mouse IgG Polyclonal Antibody (Catalog: SAA544Mu18)

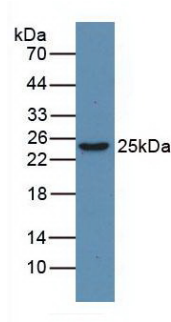
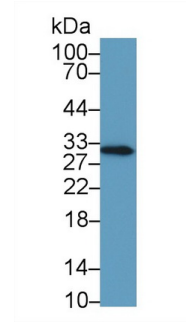


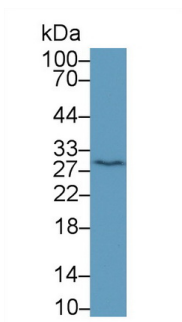
Figure. Western Blot
Human Jurkat Cells

Primary Ab: 3µg/ml Rabbit Anti-Human HMG1 Ab
Second Ab: 1:5000 Dilution of HRP-Linked Rabbit Anti-Mouse IgG Ab (Catalog: SAA544Mu09)



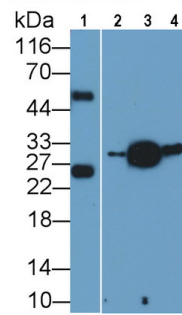
Western Blot; Sample: Human Lung lysate;

Primary Ab: 2µg/ml Mouse Anti-Human HMG1 Antibody
Second Ab: 0.2µg/ml HRP-Linked Caprine Anti-Mouse IgG Polyclonal Antibody (Catalog: SAA544Mu19)



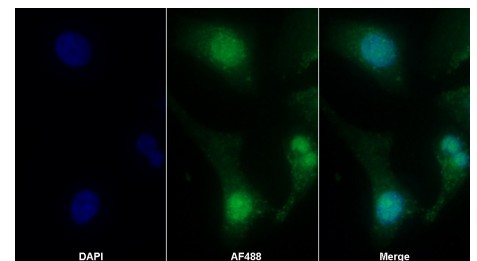
Western Blot; Sample: Human HeLa cell lysate;

Primary Ab: 2µg/ml Mouse Anti-Human HMG1 Antibody
Second Ab: 0.2µg/ml HRP-Linked Caprine Anti-Mouse IgG Polyclonal Antibody (Catalog: SAA544Mu19)



Western Blot; Sample: Lane1: Rat Lung lysate; Lane2: Rat Cerebrum lysate; Lane3: Jurkat cell lysate; Lane4: HeLa cell lysate

Primary Ab: 0.2µg/ml Mouse Anti-Human HMGB1 Antibody
Second Ab: 0.2µg/ml HRP-Linked Caprine Anti-Mouse IgG Polyclonal Antibody



AF488 staining on IF;

Sample: HeLa cell
Primary Ab: 30µg/ml Mouse Anti-Human HMGB1 Antibody
Second Ab: 2µg/ml AF488-Linked Caprine Anti-Mouse IgG Polyclonal Antibody (Catalog: SAA544Mu11)

(Catalog: SAA544Mu19)

[IMPORTANT NOTE]

The kit is designed for research use only, we will not be responsible for any issue if the kit was used in clinical diagnostic or any other procedures.