

**MAA074Hu22**

**Monoclonal Antibody to Immunoglobulin G1 (IgG1)**

**Organism Species: *Homo sapiens* (Human)**

***Instruction manual***

FOR RESEARCH USE ONLY

NOT FOR USE IN CLINICAL DIAGNOSTIC PROCEDURES

---

13th Edition (Revised in Aug, 2023)

**[ PROPERTIES ]**

**Source:** Monoclonal antibody preparation

**Host:** Mouse

**Antibody isotype:** IgG1 Kappa

**Purification:** Protein A + Protein G affinity chromatography

**Clone number:** 5#

**Traits:** Liquid

**Concentration:** 0.63mg/mL

**UOM:** 100µL

**Cross Reactivity:** N/A

**Applications:** WB

**[ IMMUNOGEN ]**

**Immunogen:** Native IgG1

**Accession No.:** NPA074Hu01

**[ APPLICATIONS ]**

Western blotting: 0.01-5µg/mL

Optimal working dilutions must be determined by end user.

**[ FORMULATION ]**

**Form & Buffer:** Supplied as solution form in PBS, pH7.4, containing 0.02% NaN<sub>3</sub>, 50% glycerol.

**[ STORAGE AND STABILITY ]**

**Storage:** Avoid repeated freeze/thaw cycles.

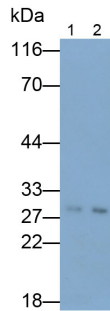
Store at 4°C for frequent use.

Aliquot and store at -20°C for 24 months.

**Stability Test:** The thermal stability is described by the loss rate. The loss rate was determined by accelerated thermal degradation test, that is, incubate the protein at 37°C for 48h, and no obvious degradation and precipitation were observed. The loss rate is less than 5% within the

expiration date under appropriate storage condition.

### [ IDENTIFICATION ]



Western Blot; Samples: Lane1: Human

Serum; Lane2: Human Plasma;

Primary Ab: 0.1 $\mu$ g/ml Mouse Anti-  
Human IgG1 Antibody

Second Ab: 0.2 $\mu$ g/ml HRP-Linked  
Caprine Anti-Mouse IgG Polyclonal  
Antibody

(Catalog: SAA544Mu19)

### [ IMPORTANT NOTE ]

The kit is designed for research use only, we will not be responsible for any issue if the kit was used in clinical diagnostic or any other procedures.