

**MAB547Hu22**

**Monoclonal Antibody to Indoleamine-2,3-Dioxygenase (IDO)**

**Organism Species: *Homo sapiens* (Human)**

***Instruction manual***

FOR RESEARCH USE ONLY

NOT FOR USE IN CLINICAL DIAGNOSTIC PROCEDURES

---

13th Edition (Revised in Aug, 2023)

**[ PROPERTIES ]**

**Source:** Monoclonal antibody preparation

**Host:** Mouse

**Antibody isotype:** IgG1 Kappa

**Purification:** Protein A + Protein G affinity chromatography

**Clone number:** C13

**Traits:** Liquid

**Concentration:** 1mg/mL

**UOM:** 100µL

**Cross Reactivity:** Rat

**Applications:** WB; ICC/IF; FCM

**[ IMMUNOGEN ]**

**Immunogen:** Recombinant IDO (Ala2~Gly403) expressed in *E.coli*

**Accession No.:** RPB547Hu01

**[ APPLICATIONS ]**

Western blotting: 0.01-2µg/mL;

Immunofluorescence: 5-20µg/mL;

Flow cytometry: 10µg/mL;

Optimal working dilutions must be determined by end user.

**[ FORMULATION ]**

**Form & Buffer:** Supplied as solution form in 0.01M PBS, pH7.4, containing 0.05% Proclin-300, 50% glycerol.

**[ STORAGE AND STABILITY ]**

**Storage:** Avoid repeated freeze/thaw cycles.

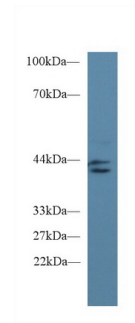
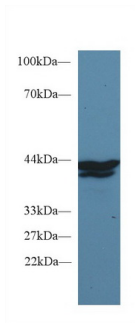
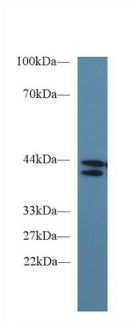
Store at 4°C for frequent use.

Aliquot and store at -20°C for 24 months.

**Stability Test:** The thermal stability is described by the loss rate. The loss rate was determined

by accelerated thermal degradation test, that is, incubate the protein at 37°C for 48h, and no obvious degradation and precipitation were observed. The loss rate is less than 5% within the expiration date under appropriate storage condition.

**[ IDENTIFICATION ]**



Western Blot; Sample: Human 293T cell lysate;

Western Blot; Sample: Human A431 cell lysate;

Western Blot; Sample: Rat Placenta lysate;

Primary Ab: 2µg/ml Mouse Anti-Human IDO Antibody

Primary Ab: 2µg/ml Mouse Anti-Human IDO Antibody

Primary Ab: 2µg/ml Mouse Anti-Human IDO Antibody

Second Ab: 0.2µg/mL HRP-Linked Caprine Anti-Mouse IgG Polyclonal Antibody

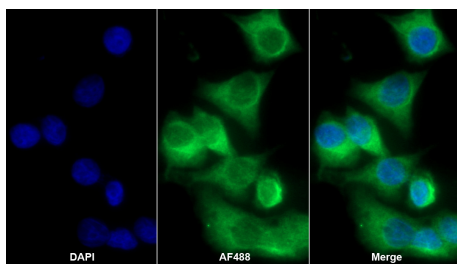
Second Ab: 0.2µg/mL HRP-Linked Caprine Anti-Mouse IgG Polyclonal Antibody

Second Ab: 0.2µg/mL HRP-Linked Caprine Anti-Mouse IgG Polyclonal Antibody

(Catalog: SAA544Mu19)

(Catalog: SAA544Mu19)

(Catalog: SAA544Mu19)



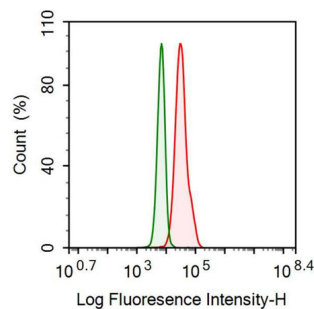
AF488 staining on IF;

Sample: HeLa cell

Primary Ab: 20µg/ml Mouse Anti-Human IDO Antibody

Second Ab: 2µg/ml AF488-Linked Caprine Anti-Mouse IgG Polyclonal Antibody

(Catalog: SAA544Mu11)



Human HeLa cell line was fixed with 2% paraformaldehyde (10 min) , permeabilised with 0.1% BSA-Triton X-100, then stained with 10µg/ml mouse Anti-human IDO Monoclonal Antibody (Catalog MAB547Hu22, red histogram) or Isotype control antibody (Catalog IS067-Mu01, green histogram),

followed by 1µg/ml FITC-conjugated  
Anti-mouse IgG Secondary Antibody  
(Catalog SAA544Mu18).

**[ IMPORTANT NOTE ]**

The kit is designed for research use only, we will not be responsible for any issue if the kit was used in clinical diagnostic or any other procedures.