

**MAB659Hu22**

**Monoclonal Antibody to Insulin Like Growth Factor 1 Receptor (IGF1R)**

**Organism Species: *Homo sapiens (Human)***

***Instruction manual***

FOR RESEARCH USE ONLY

NOT FOR USE IN CLINICAL DIAGNOSTIC PROCEDURES

---

13th Edition (Revised in Aug, 2023)

**[ PROPERTIES ]**

**Source:** Monoclonal antibody preparation

**Host:** Mouse

**Antibody isotype:** IgG2b Kappa

**Purification:** Protein A + Protein G affinity chromatography

**Clone number:** C2

**Traits:** Liquid

**Concentration:** 1mg/mL

**UOM:** 50µL

**Cross Reactivity:** N/A

**Applications:** WB; ICC/IF

**[ IMMUNOGEN ]**

**Immunogen:** Recombinant IGF1R (Tyr763~Leu955) expressed in *E.coli*

**Accession No.:** RPB659Hu01

**[ APPLICATIONS ]**

Western blotting: 0.01-2µg/mL;

Immunofluorescence: 5-20µg/mL;

Optimal working dilutions must be determined by end user.

**[ FORMULATION ]**

**Form & Buffer:** Supplied as solution form in PBS, pH7.4, containing 0.02% NaN<sub>3</sub>, 50% glycerol.

**[ STORAGE AND STABILITY ]**

**Storage:** Avoid repeated freeze/thaw cycles.

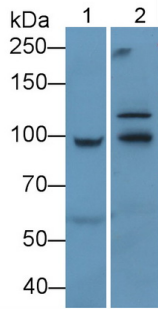
Store at 4°C for frequent use.

Aliquot and store at -20°C for 24 months.

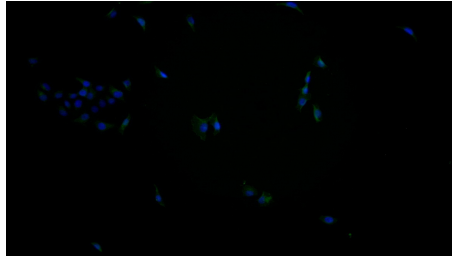
**Stability Test:** The thermal stability is described by the loss rate. The loss rate was determined by accelerated thermal degradation test, that is, incubate the protein at 37°C for 48h, and no

obvious degradation and precipitation were observed. The loss rate is less than 5% within the expiration date under appropriate storage condition.

**[ IDENTIFICATION ]**



Western Blot; Sample: Lane1: Human Skeletal muscle lysate; Lane2: Human MCF7 cell lysate; Primary Ab: 3µg/ml Mouse Anti-Human IGF1R Antibody Second Ab: 0.2µg/mL HRP-Linked Rabbit Anti-Mouse IgG Polyclonal Antibody (Catalog: SAA544Mu19)



FITC staining on IF; Samples: Human MCF7 cell; Primary Ab: 20µg/ml Mouse Anti-Human IGF1R Antibody Second Ab: 1µg/ml FITC-Linked Caprine Anti-Mouse IgG Polyclonal Antibody (Catalog: SAA544Mu18)

**[ IMPORTANT NOTE ]**

The kit is designed for research use only, we will not be responsible for any issue if the kit was used in clinical diagnostic or any other procedures.