

MAA071Hu21

Monoclonal Antibody to Interleukin 1 Alpha (IL1a)

Organism Species: *Homo sapiens (Human)*

Instruction manual

FOR RESEARCH USE ONLY

NOT FOR USE IN CLINICAL DIAGNOSTIC PROCEDURES

13th Edition (Revised in Aug, 2023)

[PROPERTIES]

Source: Monoclonal antibody preparation

Host: Mouse

Antibody isotype: IgG2b Kappa

Purification: Protein A + Protein G affinity chromatography

Clone number: 3#

Traits: Liquid

Concentration: 1mg/mL

UOM: 100µL

Cross Reactivity: Rat

Applications: WB

[IMMUNOGEN]

Immunogen: Recombinant IL1a (Ser113~Ala271) expressed in *E.coli*

Accession No.: RPA071Hu01

[APPLICATIONS]

Western blotting: 0.01-5µg/mL;

Optimal working dilutions must be determined by end user.

[FORMULATION]

Form & Buffer: Supplied as solution form in 0.01M PBS, pH7.4, containing 0.05% Proclin-300, 50% glycerol.

[STORAGE AND STABILITY]

Storage: Avoid repeated freeze/thaw cycles.

Store at 4°C for frequent use.

Aliquot and store at -20°C for 24 months.

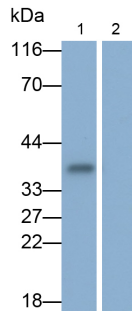
Stability Test: The thermal stability is described by the loss rate. The loss rate was determined by accelerated thermal degradation test, that is, incubate the protein at 37°C for 48h, and no obvious degradation and precipitation were observed. The loss rate is less than 5% within the

expiration date under appropriate storage condition.

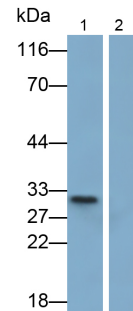
[IDENTIFICATION]



Western Blot; Sample: Human Leukocyte lysate
 Primary Ab: 0.3µg/ml Mouse Anti-Human IL1a Antibody
 Second Ab: 0.2µg/ml HRP-Linked Caprine Anti-Mouse IgG Polyclonal Antibody (Catalog: SAA544Mu19)



Western Blot; Samples: Lane1: Rat macrophage cells treated with 10µg/ml LPS and 10µg/ml PHA for 24 hours, cell precipitation; Lane2: Untreated Rat macrophage lysate;
 Primary Ab: 0.3µg/ml Mouse Anti-Human IL1a Antibody
 Second Ab: 0.2µg/ml HRP-Linked Caprine Anti-Mouse IgG Polyclonal Antibody (Catalog: SAA544Mu19)



Western Blot; Samples: Lane1: RAW264.7 treated with 1µg/ml LPS for 24 hours, cell precipitation; Lane2: Untreated RAW264.7 cell lysate;
 Primary Ab: 0.3µg/ml Mouse Anti-Human IL1a Antibody
 Second Ab: 0.2µg/ml HRP-Linked Caprine Anti-Mouse IgG Polyclonal Antibody (Catalog: SAA544Mu19)

[IMPORTANT NOTE]

The kit is designed for research use only, we will not be responsible for any issue if the kit was used in clinical diagnostic or any other procedures.