

**MAA063Rb21**

**Monoclonal Antibody to Interleukin 17 (IL17)**

**Organism Species: *Oryctolagus cuniculus* (Rabbit)**

***Instruction manual***

FOR RESEARCH USE ONLY

NOT FOR USE IN CLINICAL DIAGNOSTIC PROCEDURES

---

13th Edition (Revised in Aug, 2023)

**[ PROPERTIES ]**

**Source:** Monoclonal antibody preparation

**Host:** Mouse

**Antibody isotype:** IgG1 Kappa

**Purification:** Protein A + Protein G affinity chromatography

**Clone number:** 6#

**Traits:** Liquid

**Concentration:** 1mg/mL

**UOM:** 100µL

**Cross Reactivity:** Human

**Applications:** IHC

**[ IMMUNOGEN ]**

**Immunogen:** Recombinant IL17 (Val21~Ala153) expressed in *E.coli*

**Accession No.:** RPA063Rb01

**[ APPLICATIONS ]**

Immunohistochemistry: 5-30µg/mL;

Optimal working dilutions must be determined by end user.

**[ FORMULATION ]**

**Form & Buffer:** Supplied as solution form in PBS, pH7.4, containing 0.02% NaN<sub>3</sub>, 50% glycerol.

**[ STORAGE AND STABILITY ]**

**Storage:** Avoid repeated freeze/thaw cycles.

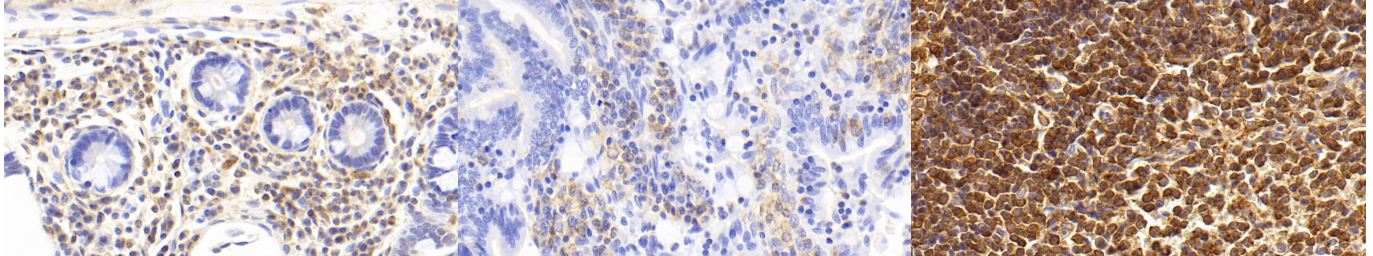
Store at 4°C for frequent use.

Aliquot and store at -20°C for 24 months.

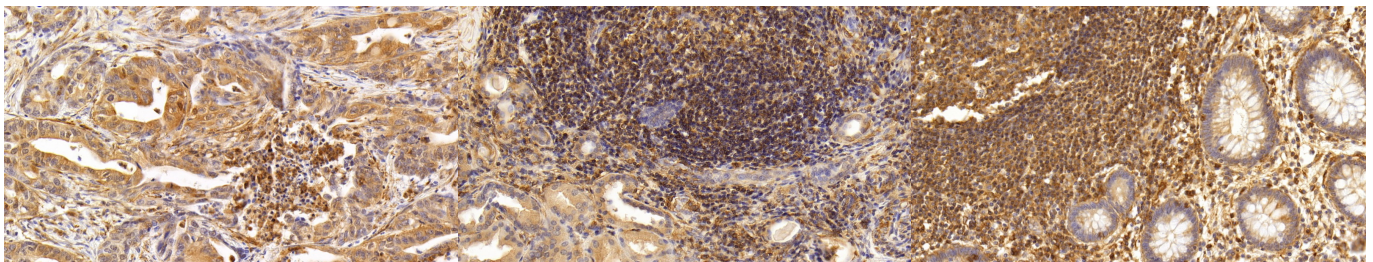
**Stability Test:** The thermal stability is described by the loss rate. The loss rate was determined by accelerated thermal degradation test, that is, incubate the protein at 37°C for 48h, and no obvious degradation and precipitation were observed. The loss rate is less than 5% within the

expiration date under appropriate storage condition.

**[ IDENTIFICATION ]**



DAB staining on IHC-P; Samples: Rabbit Colon Tissue; Primary Ab: 30µg/ml Mouse Anti-Rabbit IL17 Antibody Second Ab: 2µg/mL HRP-Linked Caprine Anti-Mouse IgG Polyclonal Antibody (Catalog: SAA544Mu19)	DAB staining on IHC-P; Samples: Rabbit Small intestine Tissue; Primary Ab: 30µg/ml Mouse Anti-Rabbit IL17 Antibody Second Ab: 2µg/mL HRP-Linked Caprine Anti-Mouse IgG Polyclonal Antibody (Catalog: SAA544Mu19)	DAB staining on IHC-P; Sample: Rabbit Spleen Tissue; Primary Ab: 20ug/ml Mouse Anti-Rabbit IL17 Antibody Second Ab: 2µg/mL HRP-Linked Caprine Anti-Mouse IgG Polyclonal Antibody (Catalog: SAA544Mu19)
--	--	--



DAB staining on IHC-P; Sample: Human Stomach cancer Tissue; Primary Ab: 20ug/ml Mouse Anti-Rabbit IL17 Antibody Second Ab: 2µg/mL HRP-Linked Caprine Anti-Mouse IgG Polyclonal Antibody (Catalog: SAA544Mu19)	DAB staining on IHC-P; Sample: Human Kidney Tissue; Primary Ab: 20ug/ml Mouse Anti-Rabbit IL17 Antibody Second Ab: 2µg/mL HRP-Linked Caprine Anti-Mouse IgG Polyclonal Antibody (Catalog: SAA544Mu19)	DAB staining on IHC-P; Sample: Human Rectum Tissue; Primary Ab: 20ug/ml Mouse Anti-Rabbit IL17 Antibody Second Ab: 2µg/mL HRP-Linked Caprine Anti-Mouse IgG Polyclonal Antibody (Catalog: SAA544Mu19)
---	---	---

**[ IMPORTANT NOTE ]**

The kit is designed for research use only, we will not be responsible for any issue if the kit was

used in clinical diagnostic or any other procedures.