

MAA785Ra21

Monoclonal Antibody to Kidney Injury Molecule 1 (Kim1)

Organism Species: *Rattus norvegicus* (Rat)

Instruction manual

FOR RESEARCH USE ONLY

NOT FOR USE IN CLINICAL DIAGNOSTIC PROCEDURES

13th Edition (Revised in Aug, 2023)

[PROPERTIES]

Source: Monoclonal antibody preparation

Host: Mouse

Antibody isotype: IgG1 Kappa

Purification: Protein A + Protein G affinity chromatography

Clone number: C8

Traits: Liquid

Concentration: 0.83mg/mL

UOM: 100 μ L

Cross Reactivity: N/A

Applications: IHC

[IMMUNOGEN]

Immunogen: Recombinant Kim1 (Tyr22~Gly235) expressed in *E.coli*

Accession No.: RPA785Ra01

[APPLICATIONS]

Immunohistochemistry: 5-20 μ g/mL;

Optimal working dilutions must be determined by end user.

[FORMULATION]

Form & Buffer: Supplied as solution form in 0.01M PBS, pH7.4, containing 0.05% Proclin-300, 50% glycerol.

[STORAGE AND STABILITY]

Storage: Avoid repeated freeze/thaw cycles.

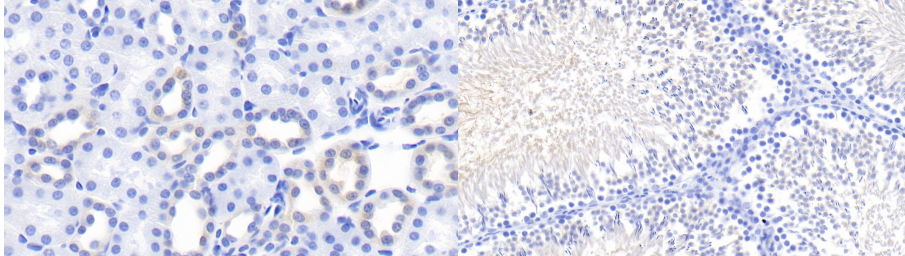
Store at 4°C for frequent use.

Aliquot and store at -20°C for 24 months.

Stability Test: The thermal stability is described by the loss rate. The loss rate was determined by accelerated thermal degradation test, that is, incubate the protein at 37°C for 48h, and no obvious degradation and precipitation were observed. The loss rate is less than 5% within the

expiration date under appropriate storage condition.

[IDENTIFICATION]



DAB staining on IHC-P; Sample: Rat
Kidney Tissue; Primary Ab: 20µg/ml
Mouse Anti-Rat Kim1 Antibody Second
Ab: 2µg/mL HRP-Linked Caprine Anti-
Mouse IgG Polyclonal Antibody
(Catalog: SAA544Mu19)

DAB staining on IHC-P;
Sample: Rat Testis Tissue;
Primary Ab: 20µg/ml Mouse Anti-Rat
Kim1 Antibody
Second Ab: 2µg/mL HRP-Linked
Caprine Anti-Mouse IgG Polyclonal
Antibody
(Catalog: SAA544Mu19)

[IMPORTANT NOTE]

The kit is designed for research use only, we will not be responsible for any issue if the kit was used in clinical diagnostic or any other procedures.