

MAB698Ra21

Monoclonal Antibody to Lactate Dehydrogenase B (LDHB)

Organism Species: *Rattus norvegicus* (Rat)

Instruction manual

FOR RESEARCH USE ONLY

NOT FOR USE IN CLINICAL DIAGNOSTIC PROCEDURES

13th Edition (Revised in Aug, 2023)

[PROPERTIES]

Source: Monoclonal antibody preparation

Host: Mouse

Antibody isotype: IgG2b Kappa

Purification: Protein A + Protein G affinity chromatography

Clone number: 1#

Traits: Liquid

Concentration: 1mg/mL

UOM: 100µL

Cross Reactivity: Human;Porcine

Applications: WB

[IMMUNOGEN]

Immunogen: Recombinant LDHB (Met1-Leu334 (Accession # P42123)) expressed in *E.coli*

Accession No.: RPB698Ra01

[APPLICATIONS]

Western blotting: 0.01-2µg/mL;

Optimal working dilutions must be determined by end user.

[FORMULATION]

Form & Buffer: Supplied as solution form in PBS, pH7.4, containing 0.02% NaN₃, 50% glycerol.

[STORAGE AND STABILITY]

Storage: Avoid repeated freeze/thaw cycles.

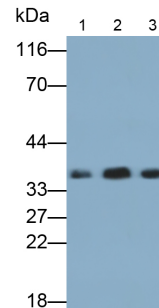
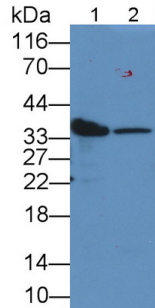
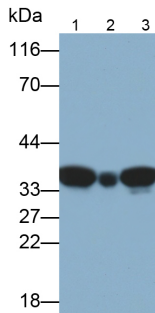
Store at 4°C for frequent use.

Aliquot and store at -20°C for 24 months.

Stability Test: The thermal stability is described by the loss rate. The loss rate was determined by accelerated thermal degradation test, that is, incubate the protein at 37°C for 48h, and no obvious degradation and precipitation were observed. The loss rate is less than 5% within the

expiration date under appropriate storage condition.

[IDENTIFICATION]



Western Blot; Samples: Lane1: Porcine Cerebrum lysate; Lane2: Porcine Skeletal muscle lysate; Lane3: Jurkat cell lysate; Primary Ab: 0.005µg/ml Mouse Anti-Rat LDHB Antibody Second Ab: 0.2µg/ml HRP-Linked Caprine Anti-Mouse IgG Polyclonal Antibody (Catalog: SAA544Mu19)

Western Blot; Sample: Lane1: Jurkat cell lysate; Lane2: A431 cell lysate Primary Ab: 2µg/ml Mouse Anti-Rat LDHB Antibody Second Ab: 0.2µg/mL HRP-Linked Caprine Anti-Mouse IgG Polyclonal Antibody (Catalog: SAA544Mu19)

Western Blot; Samples: Lane1: Fetal Rat Cerebrum lysate; Lane2: Fetal Rat Heart lysate; Lane3: Fetal Rat Kidney lysate; Primary Ab: 0.005µg/ml Mouse Anti-Rat LDHB Antibody Second Ab: 0.2µg/ml HRP-Linked Caprine Anti-Mouse IgG Polyclonal Antibody (Catalog: SAA544Mu19)

[IMPORTANT NOTE]

The kit is designed for research use only, we will not be responsible for any issue if the kit was used in clinical diagnostic or any other procedures.