

MAF548Hu21

Monoclonal Antibody to Lamin B1 (LMNB1)

Organism Species: *Homo sapiens (Human)*

Instruction manual

FOR RESEARCH USE ONLY

NOT FOR USE IN CLINICAL DIAGNOSTIC PROCEDURES

13th Edition (Revised in Aug, 2023)

[PROPERTIES]

Source: Monoclonal antibody preparation

Host: Mouse

Antibody isotype: IgG2b Kappa

Purification: Protein A + Protein G affinity chromatography

Clone number: 203#

Traits: Liquid

Concentration: 1mg/mL

UOM: 50µg(50µL)

Cross Reactivity: Cavia; Rabbit; Canine; Porcine; Bovine;Caprine ;Ovine

Applications: WB

[IMMUNOGEN]

Immunogen: Recombinant LMNB1 (Ser52~Gly233) expressed in *E.coli*

Accession No.: RPF548Hu01

[APPLICATIONS]

Western blotting: 0.01-2µg/mL;

Optimal working dilutions must be determined by end user.

[FORMULATION]

Form & Buffer: Supplied as solution form in 0.01M PBS, pH7.4, containing 0.05% Proclin-300, 50% glycerol.

[STORAGE AND STABILITY]

Storage: Avoid repeated freeze/thaw cycles.

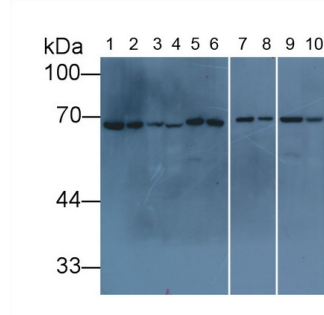
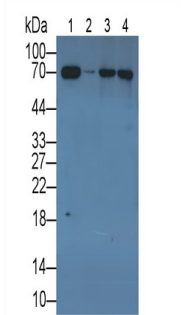
Store at 4°C for frequent use.

Aliquot and store at -20°C for 24 months.

Stability Test: The thermal stability is described by the loss rate. The loss rate was determined by accelerated thermal degradation test, that is, incubate the protein at 37°C for 48h, and no obvious degradation and precipitation were observed. The loss rate is less than 5% within the

expiration date under appropriate storage condition.

[IDENTIFICATION]



Western Blot; Sample: Lane1: Human Lung lysate; Lane2: Porcine Cerebrum lysate; Lane3: Human Hela cells lysate; Lane4: Human HepG2 cells lysate; Primary Ab: 3µg/ml Mouse Anti-Human LMNB1 Antibody Second Ab: 0.2µg/mL HRP-Linked Rabbit Anti-Mouse IgG Polyclonal Antibody (Catalog: SAA544Mu19)

Western Blot Sample: Lane1: Human Lung lysate; Lane2: 293T cell lysate; Lane3: Cavia Lung lysate; Lane4: Cavia Kidney lysate; Lane5: Canine Lung lysate; Lane6: Canine Kidney lysate; Lane7: Bovine Kidney lysate; Lane8: Rabbit Lung lysate; Lane9: Caprine Lung lysate; Lane10: Caprine Kidney lysate;

Primary Ab: 1?g/ml Mouse Anti-Human LMNB1 Antibody
 Second Ab: 0.2µg/mL HRP-Linked Rabbit Anti-Mouse IgG Polyclonal Antibody
 (Catalog: SAA544Mu19)

[IMPORTANT NOTE]

The kit is designed for research use only, we will not be responsible for any issue if the kit was used in clinical diagnostic or any other procedures.