

**MAB526Ge27**

**Monoclonal Antibody to Lipopolysaccharide (LPS)**

**Organism Species: *Pan-species (General)***

***Instruction manual***

FOR RESEARCH USE ONLY

NOT FOR USE IN CLINICAL DIAGNOSTIC PROCEDURES

---

13th Edition (Revised in Aug, 2023)

**[ PROPERTIES ]**

**Source:** Monoclonal antibody preparation

**Host:** Mouse

**Antibody isotype:** IgG2b Kappa

**Purification:** Protein A + Protein G affinity chromatography

**Clone number:** C13

**Traits:** Liquid

**Concentration:** 1mg/mL

**UOM:** 100µL

**Cross Reactivity:** General

**Applications:** WB; IHC

**[ IMMUNOGEN ]**

**Immunogen:** Small Molecule, LPS conjugated to OVA.

**Accession No.:** CPB526Ge21

**[ APPLICATIONS ]**

Western blotting: 0.01-2µg/mL;

Immunohistochemistry: 5-20µg/mL;

Optimal working dilutions must be determined by end user.

**[ FORMULATION ]**

**Form & Buffer:** Supplied as solution form in 0.01M PBS, pH7.4, containing 0.05% Proclin-300, 50% glycerol.

**[ STORAGE AND STABILITY ]**

**Storage:** Avoid repeated freeze/thaw cycles.

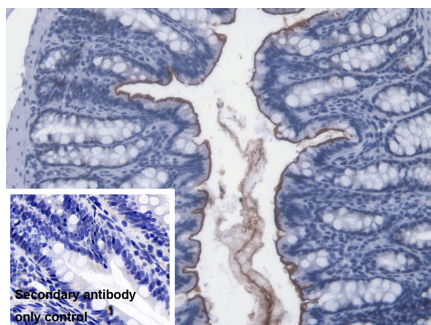
Store at 4°C for frequent use.

Aliquot and store at -20°C for 24 months.

**Stability Test:** The thermal stability is described by the loss rate. The loss rate was determined by accelerated thermal degradation test, that is, incubate the protein at 37°C for 48h, and no

obvious degradation and precipitation were observed. The loss rate is less than 5% within the expiration date under appropriate storage condition.

### [ IDENTIFICATION ]



DAB staining on IHC-P;

Sample: Rat Colon Tissue

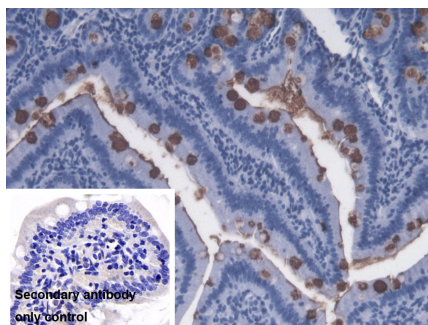
Primary Ab: 20µg/ml Mouse Anti-Multi-species LPS Antibody

Control: Used PBS instead of primary antibody

Second Ab: 2?g/ml HRP-Linked

Caprine Anti-Mouse IgG Polyclonal Antibody

(Catalog: SAA544Mu19)



DAB staining on IHC-P;

Sample: Rat Small intestine Tissue

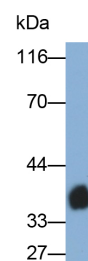
Primary Ab: 20µg/ml Mouse Anti-Multi-species LPS Antibody

Control: Used PBS instead of primary antibody

Second Ab: 2?g/ml HRP-Linked

Caprine Anti-Mouse IgG Polyclonal Antibody

(Catalog: SAA544Mu19)



Western Blot; Sample: Natural

Lipopolysaccharides

Primary Ab: 0.05µg/ml Mouse Anti-Multi-species LPS Antibody

Second Ab: 0.2?g/ml HRP-Linked Caprine Anti-Mouse IgG Polyclonal

Antibody

(Catalog: SAA544Mu19)

### [ IMPORTANT NOTE ]

The kit is designed for research use only, we will not be responsible for any issue if the kit was used in clinical diagnostic or any other procedures.