

MAA087Rb21

Monoclonal Antibody to Monocyte Chemotactic Protein 1 (MCP1)

Organism Species: *Oryctolagus cuniculus* (Rabbit)

Instruction manual

FOR RESEARCH USE ONLY

NOT FOR USE IN CLINICAL DIAGNOSTIC PROCEDURES

13th Edition (Revised in Aug, 2023)

[PROPERTIES]

Source: Monoclonal antibody preparation

Host: Mouse

Antibody isotype: IgG1 Kappa

Purification: Protein A + Protein G affinity chromatography

Clone number: 13#

Traits: Liquid

Concentration: 1mg/mL

UOM: 100µL

Cross Reactivity: Human

Applications: ICC/IF

[IMMUNOGEN]

Immunogen: Recombinant MCP1 (Gln24~Leu125) expressed in *E.coli*

Accession No.: RPA087Rb01

[APPLICATIONS]

Immunofluorescence: 5-30µg/mL;

Optimal working dilutions must be determined by end user.

[FORMULATION]

Form & Buffer: Supplied as solution form in 0.01M PBS, pH7.4, containing 0.05% Proclin-300, 50% glycerol.

[STORAGE AND STABILITY]

Storage: Avoid repeated freeze/thaw cycles.

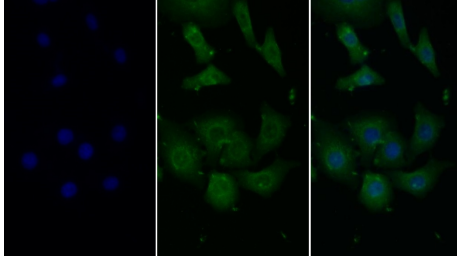
Store at 4°C for frequent use.

Aliquot and store at -20°C for 24 months.

Stability Test: The thermal stability is described by the loss rate. The loss rate was determined by accelerated thermal degradation test, that is, incubate the protein at 37°C for 48h, and no obvious degradation and precipitation were observed. The loss rate is less than 5% within the

expiration date under appropriate storage condition.

[IDENTIFICATION]



FITC staining on IF;

Sample: Human Hela cell;

Primary Ab: 30ug/ml Mouse Anti-Rabbit

MCP1 Antibody

Second Ab: 5µg/ml FITC-Linked

Caprine Anti-Mouse IgG Polyclonal

Antibody

(Catalog: SAA544Mu18)

[IMPORTANT NOTE]

The kit is designed for research use only, we will not be responsible for any issue if the kit was used in clinical diagnostic or any other procedures.