

MAA899Bo21

Monoclonal Antibody to Osteopontin (OPN)

Organism Species: *Bos taurus*; Bovine (Cattle)

Instruction manual

FOR RESEARCH USE ONLY

NOT FOR USE IN CLINICAL DIAGNOSTIC PROCEDURES

13th Edition (Revised in Aug, 2023)

[PROPERTIES]

Source: Monoclonal antibody preparation

Host: Mouse

Antibody isotype: IgG2a Kappa

Purification: Protein A + Protein G affinity chromatography

Clone number: C8

Traits: Liquid

Concentration: 1mg/mL

UOM: 100 μ L

Cross Reactivity: Human;Porcine

Applications: WB

[IMMUNOGEN]

Immunogen: Recombinant OPN (Leu17~Asn278) expressed in *E.coli*

Accession No.: RPA899Bo01

[APPLICATIONS]

Western blotting: 0.01-2 μ g/mL;

Optimal working dilutions must be determined by end user.

[FORMULATION]

Form & Buffer: Supplied as solution form in 0.01M PBS, pH7.4, containing 0.05% Proclin-300, 50% glycerol.

[STORAGE AND STABILITY]

Storage: Avoid repeated freeze/thaw cycles.

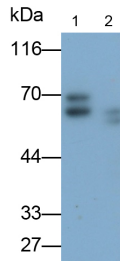
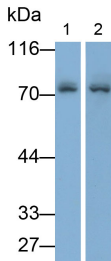
Store at 4°C for frequent use.

Aliquot and store at -20°C for 24 months.

Stability Test: The thermal stability is described by the loss rate. The loss rate was determined by accelerated thermal degradation test, that is, incubate the protein at 37°C for 48h, and no obvious degradation and precipitation were observed. The loss rate is less than 5% within the

expiration date under appropriate storage condition.

[IDENTIFICATION]



Western Blot; Samples: Lane1: Hela cell lysate; Lane2: Bovine Kidney lysate; Primary Ab: 0.2µg/ml Mouse Anti-Bovine OPN Antibody Second Ab: 0.2?g/ml HRP-Linked Caprine Anti-Mouse IgG Polyclonal Antibody (Catalog: SAA544Mu19)

Western Blot; Samples: Lane1: Bovine Kidney lysate; Lane2: 293T cell lysate; Primary Ab: 0.5µg/ml Mouse Anti-Bovine OPN Antibody Second Ab: 0.2?g/ml HRP-Linked Caprine Anti-Mouse IgG Polyclonal Antibody (Catalog: SAA544Mu19)

Western Blot; Sample: Porcine Kidney lysate Primary Ab: 0.5µg/ml Mouse Anti-Bovine OPN Antibody Second Ab: 0.2?g/ml HRP-Linked Caprine Anti-Mouse IgG Polyclonal Antibody (Catalog: SAA544Mu19)

[IMPORTANT NOTE]

The kit is designed for research use only, we will not be responsible for any issue if the kit was used in clinical diagnostic or any other procedures.