

**MAA532Hu21**

**Monoclonal Antibody to Plasminogen Activator Inhibitor 1 (PAI1)**

**Organism Species: *Homo sapiens (Human)***

***Instruction manual***

FOR RESEARCH USE ONLY

NOT FOR USE IN CLINICAL DIAGNOSTIC PROCEDURES

---

13th Edition (Revised in Aug, 2023)

**[ PROPERTIES ]**

**Source:** Monoclonal antibody preparation

**Host:** Mouse

**Antibody isotype:** IgG2a Kappa

**Purification:** Protein A + Protein G affinity chromatography

**Clone number:** C6

**Traits:** Liquid

**Concentration:** 1mg/mL

**UOM:** 100µL

**Cross Reactivity:** N/A

**Applications:** WB; IHC; ICC/IF

**[ IMMUNOGEN ]**

**Immunogen:** Recombinant PAI1 (His25~Pro402) expressed in *E.coli*

**Accession No.:** RPA532Hu01

**[ APPLICATIONS ]**

Western blotting: 0.01-3µg/mL;

Immunohistochemistry: 5-30µg/mL;

Immunofluorescence: 5-30µg/mL;

Optimal working dilutions must be determined by end user.

**[ FORMULATION ]**

**Form & Buffer:** Supplied as solution form in 0.01M PBS, pH7.4, containing 0.05% Proclin-300, 50% glycerol.

**[ STORAGE AND STABILITY ]**

**Storage:** Avoid repeated freeze/thaw cycles.

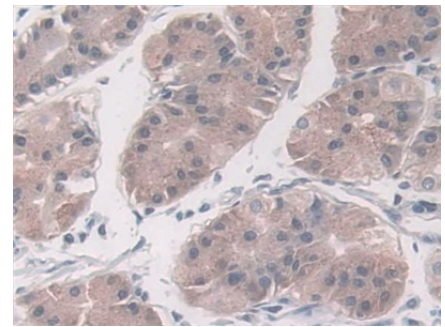
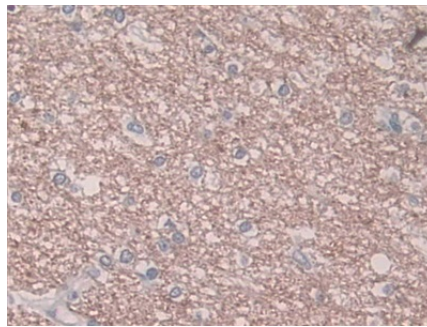
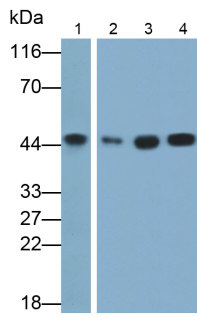
Store at 4°C for frequent use.

Aliquot and store at -20°C for 24 months.

**Stability Test:** The thermal stability is described by the loss rate. The loss rate was determined

by accelerated thermal degradation test, that is, incubate the protein at 37°C for 48h, and no obvious degradation and precipitation were observed. The loss rate is less than 5% within the expiration date under appropriate storage condition.

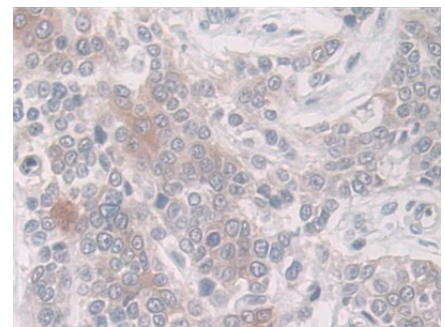
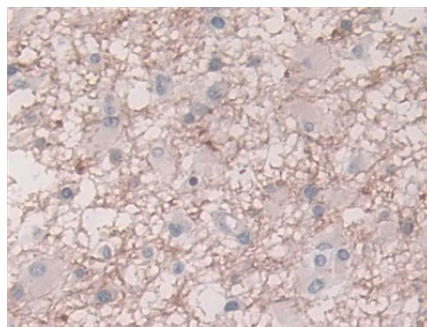
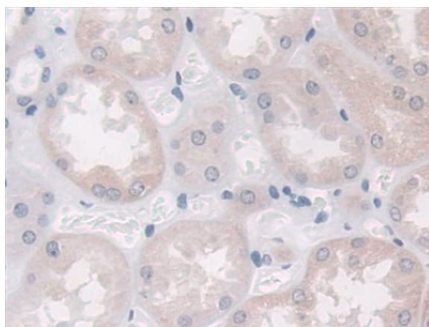
**[ IDENTIFICATION ]**



Western Blot; Samples: Lane1: Human Placenta lysate; Lane2: HUH7 cell lysate; Lane3: HepG2 cell lysate; Primary Ab: 0.3µg/ml Mouse Anti-Human PAI1 Antibody Second Ab: 0.2µg/ml HRP-Linked Caprine Anti-Mouse IgG Polyclonal Antibody (Catalog: SAA544Mu19)

DAB staining on IHC-P; Samples: Human Cerebrum Tissue; Primary Ab: 30µg/ml Mouse Anti-Human PAI1 Antibody Second Ab: 2µg/mL HRP-Linked Caprine Anti-Mouse IgG Polyclonal Antibody (Catalog: SAA544Mu19)

DAB staining on IHC-P; Samples: Human Stomach Tissue; Primary Ab: 30µg/ml Mouse Anti-Human PAI1 Antibody Second Ab: 2µg/mL HRP-Linked Caprine Anti-Mouse IgG Polyclonal Antibody (Catalog: SAA544Mu19)

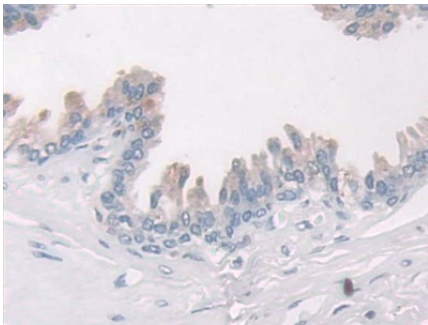


DAB staining on IHC-P; Samples: Human Kidney Tissue; Primary Ab: 30µg/ml Mouse Anti-Human PAI1 Antibody Second Ab: 2µg/mL HRP-Linked Caprine Anti-Mouse IgG Polyclonal Antibody (Catalog: SAA544Mu19)

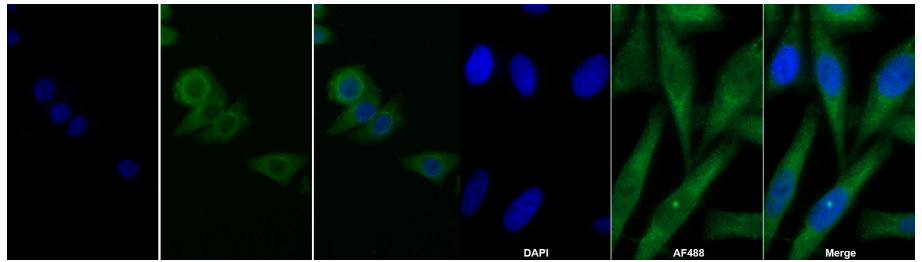
DAB staining on IHC-P; Samples: Human Glioma Tissue; Primary Ab: 30µg/ml Mouse Anti-Human PAI1 Antibody Second Ab: 2µg/mL HRP-Linked Caprine Anti-Mouse IgG Polyclonal Antibody (Catalog: SAA544Mu19)

DAB staining on IHC-P; Samples: Human Prostate cancer Tissue; Primary Ab: 30µg/ml Mouse Anti-Human PAI1 Antibody Second Ab: 2µg/mL HRP-Linked Caprine Anti-Mouse IgG Polyclonal Antibody

(Catalog: SAA544Mu19)



DAB staining on IHC-P;  
 Samples: Human Prostate Tissue;  
 Primary Ab: 30µg/ml Mouse Anti-Human PAI1 Antibody  
 Second Ab: 2µg/mL HRP-Linked Caprine Anti-Mouse IgG Polyclonal Antibody  
 (Catalog: SAA544Mu19)



FITC staining on IF;  
 Sample: Human HeLa cell;  
 Primary Ab: 30ug/ml Mouse Anti-Human PAI1 Antibody  
 Second Ab: 5?g/ml FITC-Linked Caprine Anti-Mouse IgG Polyclonal Antibody  
 (Catalog: SAA544Mu18)

AF488 staining on IF;  
 Sample: HepG2 cell  
 Primary Ab: 20µg/ml Mouse Anti-Human PAI1 Antibody  
 Second Ab: 2?g/ml AF488-Linked Caprine Anti-Mouse IgG Polyclonal Antibody  
 (Catalog: SAA544Mu11)

**[ IMPORTANT NOTE ]**

The kit is designed for research use only, we will not be responsible for any issue if the kit was used in clinical diagnostic or any other procedures.