

**MAF878Hu22**

**Monoclonal Antibody to Secreted Frizzled Related Protein 4 (SFRP4)**

**Organism Species: *Homo sapiens (Human)***

***Instruction manual***

FOR RESEARCH USE ONLY

NOT FOR USE IN CLINICAL DIAGNOSTIC PROCEDURES

---

13th Edition (Revised in Aug, 2023)

**[ PROPERTIES ]**

**Source:** Monoclonal antibody preparation

**Host:** Mouse

**Antibody isotype:** IgG2b Kappa

**Purification:** Protein A + Protein G affinity chromatography

**Clone number:** 5#

**Traits:** Liquid

**Concentration:** 1mg/mL

**UOM:** 100µL

**Cross Reactivity:** Rat;Porcine

**Applications:** WB; IHC; ICC/IF

**[ IMMUNOGEN ]**

**Immunogen:** Recombinant SFRP4 (Met265~Val346) expressed in *E.coli*

**Accession No.:** RPF878Hu01

**[ APPLICATIONS ]**

Western blotting: 0.01-2µg/mL;

Immunohistochemistry: 5-30µg/mL;

Immunofluorescence: 5-30µg/mL;

Optimal working dilutions must be determined by end user.

**[ FORMULATION ]**

**Form & Buffer:** Supplied as solution form in 0.01M PBS, pH7.4, containing 0.05% Proclin-300, 50% glycerol.

**[ STORAGE AND STABILITY ]**

**Storage:** Avoid repeated freeze/thaw cycles.

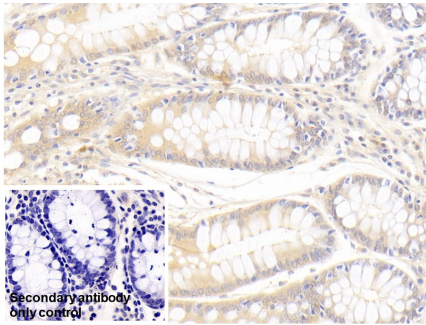
Store at 4°C for frequent use.

Aliquot and store at -20°C for 24 months.

**Stability Test:** The thermal stability is described by the loss rate. The loss rate was determined

by accelerated thermal degradation test, that is, incubate the protein at 37°C for 48h, and no obvious degradation and precipitation were observed. The loss rate is less than 5% within the expiration date under appropriate storage condition.

**[ IDENTIFICATION ]**



DAB staining on IHC-P;

Sample: Human Colon Tissue;

Primary Ab: 10µg/ml Mouse Anti-Human SFRP4 Antibody

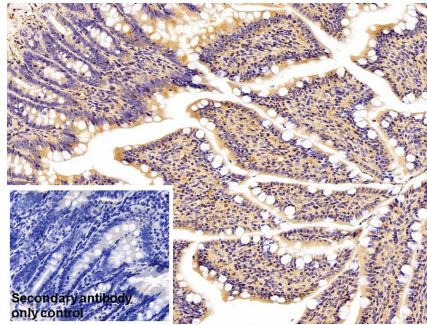
Second Ab: 2µg/ml HRP-Linked Caprine Anti-Mouse IgG Polyclonal Antibody

(Catalog: SAA544Mu19)

Secondary antibody only control: Used PBS instead of primary antibody ,

Second Ab: 2µg/ml HRP-Linked Caprine Anti-Mouse IgG Polyclonal Antibody

(Catalog: SAA544Mu19)



DAB staining on IHC-P;

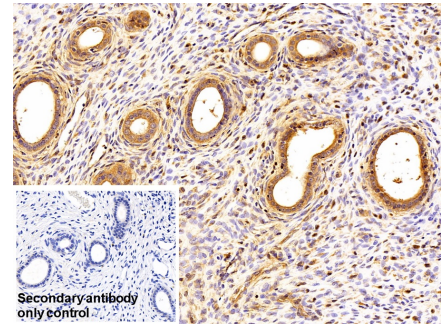
Sample: Rat Colon Tissue

Primary Ab: 30µg/ml Mouse Anti-Human SFRP4 Antibody

Control: Used PBS instead of primary antibody

Second Ab: 2µg/ml HRP-Linked Caprine Anti-Mouse IgG Polyclonal Antibody

(Catalog: SAA544Mu19)



DAB staining on IHC-P;

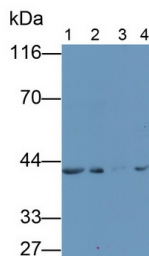
Sample: Rat Uterus Tissue

Primary Ab: 30µg/ml Mouse Anti-Human SFRP4 Antibody

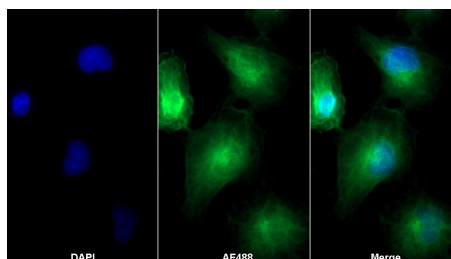
Control: Used PBS instead of primary antibody

Second Ab: 2µg/ml HRP-Linked Caprine Anti-Mouse IgG Polyclonal Antibody

(Catalog: SAA544Mu19)



Western Blot; Sample: Lane1: 293T cell lysate; Lane2: HeLa cell lysate; Lane3:



AF488 staining on IF;

Sample: A549 cell

Primary Ab: 30µg/ml Mouse Anti-

Porcine Heart lysate; Lane4: SKOV3  
cell lysate

Primary Ab: 2µg/ml Mouse Anti-Human  
SFRP4 Antibody

Second Ab: 0.2µg/mL HRP-Linked

Caprine Anti-Mouse IgG Polyclonal  
Antibody

(Catalog: SAA544Mu19) Selected

Human SFRP4 Antibody

Second Ab: 2µg/ml AF488-Linked

Caprine Anti-Mouse IgG Polyclonal  
Antibody

(Catalog: SAA544Mu11)

### **[ IMPORTANT NOTE ]**

The kit is designed for research use only, we will not be responsible for any issue if the kit was used in clinical diagnostic or any other procedures.