

MAB870Hu21

Monoclonal Antibody to Tubulin Beta (TUBb)

Organism Species: *Homo sapiens* (Human)

Instruction manual

FOR RESEARCH USE ONLY

NOT FOR USE IN CLINICAL DIAGNOSTIC PROCEDURES

13th Edition (Revised in Aug, 2023)

[PROPERTIES]

Source: Monoclonal antibody preparation

Host: Mouse

Antibody isotype: IgG2b Kappa

Purification: Protein A + Protein G affinity chromatography

Clone number: C6

Traits: Liquid

Concentration: 1mg/mL

UOM: 100µg(100µL)

Cross Reactivity: Mouse;Rat;Cavia;Porcine;Bovine;Caprine;Gallus

Applications: WB; IHC; ICC/IF

[IMMUNOGEN]

Immunogen: Recombinant TUBb (Val170~Val419) expressed in *E.coli*

Accession No.: RPB870Hu01

[APPLICATIONS]

Western blotting: 0.01-2µg/mL;

Immunohistochemistry: 5-20µg/mL;

Immunofluorescence: 5-40µg/mL;

Optimal working dilutions must be determined by end user.

[FORMULATION]

Form & Buffer: Supplied as solution form in PBS, pH7.4, containing 0.02% NaN₃, 50% glycerol.

[STORAGE AND STABILITY]

Storage: Avoid repeated freeze/thaw cycles.

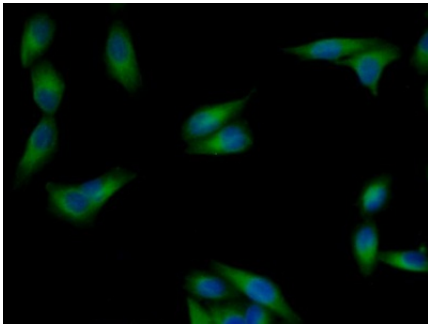
Store at 4°C for frequent use.

Aliquot and store at -20°C for 24 months.

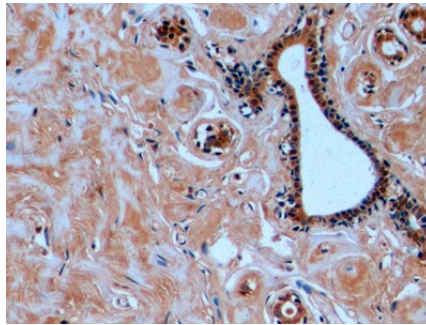
Stability Test: The thermal stability is described by the loss rate. The loss rate was determined

by accelerated thermal degradation test, that is, incubate the protein at 37°C for 48h, and no obvious degradation and precipitation were observed. The loss rate is less than 5% within the expiration date under appropriate storage condition.

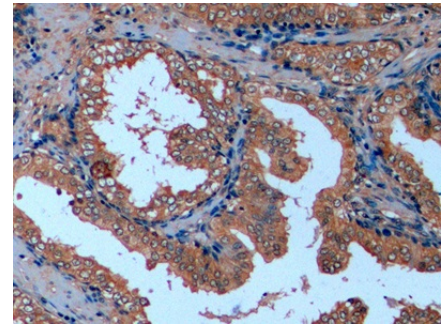
[IDENTIFICATION]



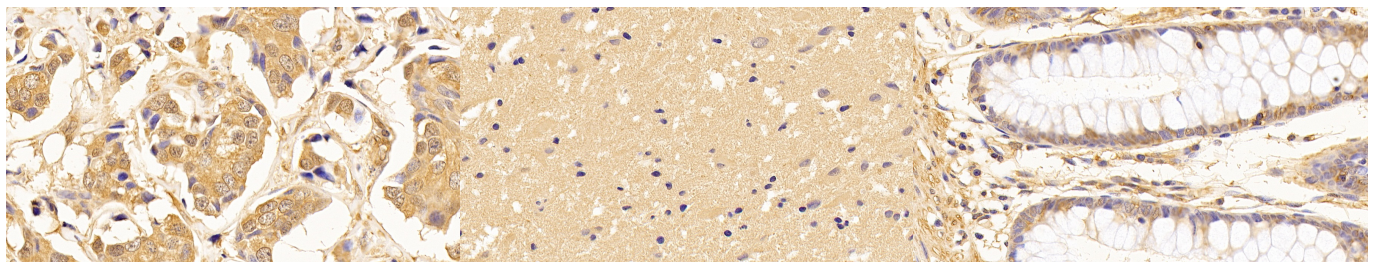
FITC staining on IF; Samples: Human MCF7 Cells; Primary Ab: 40µg/ml Mouse Anti-Human TUBb Antibody
Second Ab: 1µg/ml FITC-Linked Caprine Anti-Mouse IgG Polyclonal Antibody (Catalog: SAA544Mu18)



DAB staining on IHC-P; Samples: Human Mammary gland Tissue; Primary Ab: 10µg/ml Mouse Anti-Human TUBb Antibody
Second Ab: 2µg/mL HRP-Linked Caprine Anti-Mouse IgG Polyclonal Antibody (Catalog: SAA544Mu19)



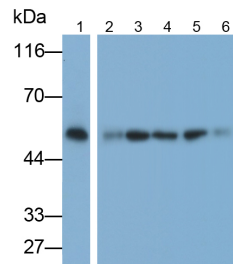
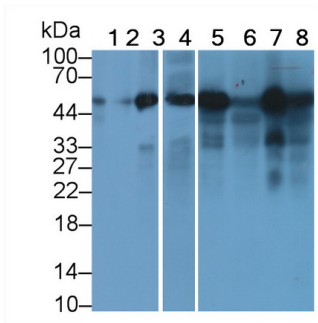
DAB staining on IHC-P; Samples: Human Prostate Tissue; Primary Ab: 10µg/ml Mouse Anti-Human TUBb Antibody
Second Ab: 2µg/mL HRP-Linked Caprine Anti-Mouse IgG Polyclonal Antibody (Catalog: SAA544Mu19)



DAB staining on IHC-P; Samples: Human Breast cancer Tissue; Primary Ab: 10ug/ml Mouse Anti-Human TUBb Antibody
Second Ab: 2µg/mL HRP-Linked Caprine Anti-Mouse IgG Polyclonal Antibody (Catalog: SAA544Mu19)

DAB staining on IHC-P; Samples: Human Cerebrum Tissue; Primary Ab: 10ug/ml Mouse Anti-Human TUBb Antibody
Second Ab: 2µg/mL HRP-Linked Caprine Anti-Mouse IgG Polyclonal Antibody (Catalog: SAA544Mu19)

DAB staining on IHC-P; Samples: Human Colon Tissue; Primary Ab: 10ug/ml Mouse Anti-Human TUBb Antibody
Second Ab: 2µg/mL HRP-Linked Caprine Anti-Mouse IgG Polyclonal Antibody (Catalog: SAA544Mu19)



Western Blot; Sample: Lane1: HeLa cell lysate; Lane2: HepG2 cell lysate; Lane3: Bovine Cerebrum lysate; Lane4: Gallus Cerebrum lysate; Lane5: Caprine Cerebrum lysate; Lane6: Caprine Kidney lysate; Lane7: Cavia Cerebrum lysate; Lane8: Cavia Kidney lysate

Western Blot; Samples: Lane1: Mouse Skeletal muscle lysate; Lane2: Rat Cerebrum lysate; Lane3: Porcine Cerebrum lysate; Lane4: Bovine Cerebrum lysate; Lane5: Gallus Cerebrum lysate; Lane6: Cavia Cerebrum lysate;

Primary Ab: 1?g/ml Mouse Anti-Human TUBb Antibody
 Second Ab: 0.2?g/ml HRP-Linked Rabbit Anti-Mouse IgG Polyclonal Antibody
 (Catalog: SAA544Mu19)

Primary Ab: 0.1?g/ml Mouse Anti-Human TUBb Antibody
 Second Ab: 0.2?g/ml HRP-Linked Caprine Anti-Mouse IgG Polyclonal Antibody
 (Catalog: SAA544Mu19)

[IMPORTANT NOTE]

The kit is designed for research use only, we will not be responsible for any issue if the kit was used in clinical diagnostic or any other procedures.