

MAB040Hu22

Monoclonal Antibody to Vimentin (VIM)

Organism Species: *Homo sapiens (Human)*

Instruction manual

FOR RESEARCH USE ONLY

NOT FOR USE IN CLINICAL DIAGNOSTIC PROCEDURES

13th Edition (Revised in Aug, 2023)

[PROPERTIES]

Source: Monoclonal antibody preparation

Host: Mouse

Antibody isotype: IgG2b Kappa

Purification: Protein A + Protein G affinity chromatography

Clone number: C12

Traits: Liquid

Concentration: 1mg/mL

UOM: 200µL

Cross Reactivity: Rat;Rabbit;Canine;Porcine

Applications: WB; IHC; ICC/IF

[IMMUNOGEN]

Immunogen: Recombinant VIM (Ser2~Glu466) expressed in *E.coli*

Accession No.: RPB040Hu01

[APPLICATIONS]

Western blotting: 0.01-2µg/mL;

Immunohistochemistry: 5-20µg/mL;

Immunofluorescence: 5-40µg/mL;

Optimal working dilutions must be determined by end user.

[FORMULATION]

Form & Buffer: Supplied as solution form in PBS, pH7.4, containing 0.02% NaN₃, 50% glycerol.

[STORAGE AND STABILITY]

Storage: Avoid repeated freeze/thaw cycles.

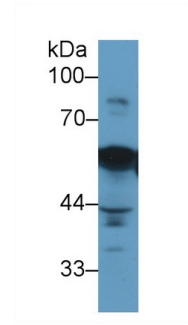
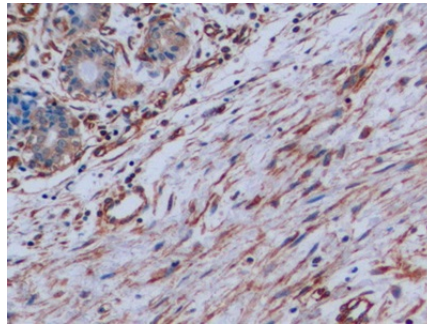
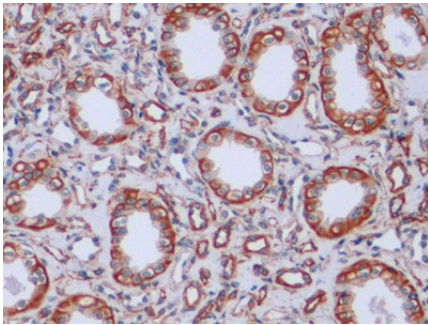
Store at 4°C for frequent use.

Aliquot and store at -20°C for 24 months.

Stability Test: The thermal stability is described by the loss rate. The loss rate was determined

by accelerated thermal degradation test, that is, incubate the protein at 37°C for 48h, and no obvious degradation and precipitation were observed. The loss rate is less than 5% within the expiration date under appropriate storage condition.

[IDENTIFICATION]



DAB staining on IHC-P;

DAB staining on IHC-P;

Western Blot; Sample: Rat Heart lysate;

Samples: Human Kidney Tissue;

Samples: Human Breast cancer Tissue; Primary Ab: 2µg/ml Mouse Anti-Human

Primary Ab: 10µg/ml Mouse Anti-Human VIM Antibody

Primary Ab: 10µg/ml Mouse Anti-Human VIM Antibody

VIM Antibody

Second Ab: 2µg/mL HRP-Linked Caprine Anti-Mouse IgG Polyclonal

Second Ab: 2µg/mL HRP-Linked Caprine Anti-Mouse IgG Polyclonal

Second Ab: 0.2µg/mL HRP-Linked Caprine Anti-Mouse IgG Polyclonal

Antibody

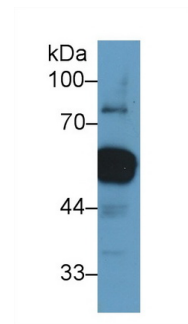
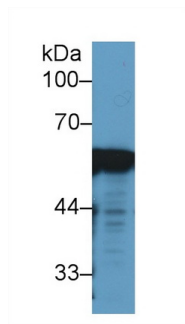
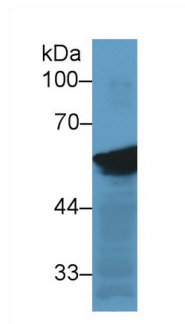
Antibody

Antibody

(Catalog: SAA544Mu19)

(Catalog: SAA544Mu19)

(Catalog: SAA544Mu19)



Western Blot; Sample: Human HeLa cell lysate;

Western Blot; Sample: Human 293T cell lysate;

Western Blot; Sample: Porcine Heart lysate;

Primary Ab: 2µg/ml Mouse Anti-Human VIM Antibody

Primary Ab: 2µg/ml Mouse Anti-Human VIM Antibody

Primary Ab: 2µg/ml Mouse Anti-Human VIM Antibody

Second Ab: 0.2µg/mL HRP-Linked Caprine Anti-Mouse IgG Polyclonal

Second Ab: 0.2µg/mL HRP-Linked Caprine Anti-Mouse IgG Polyclonal

Second Ab: 0.2µg/mL HRP-Linked Caprine Anti-Mouse IgG Polyclonal

Antibody

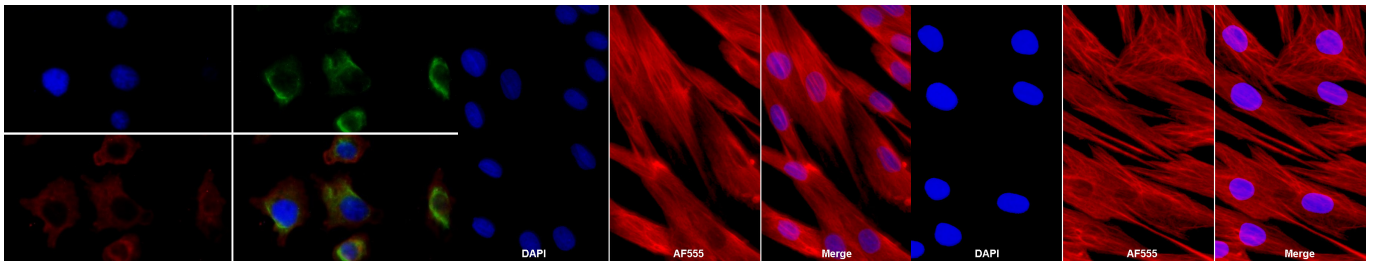
Antibody

Antibody

(Catalog: SAA544Mu19)

(Catalog: SAA544Mu19)

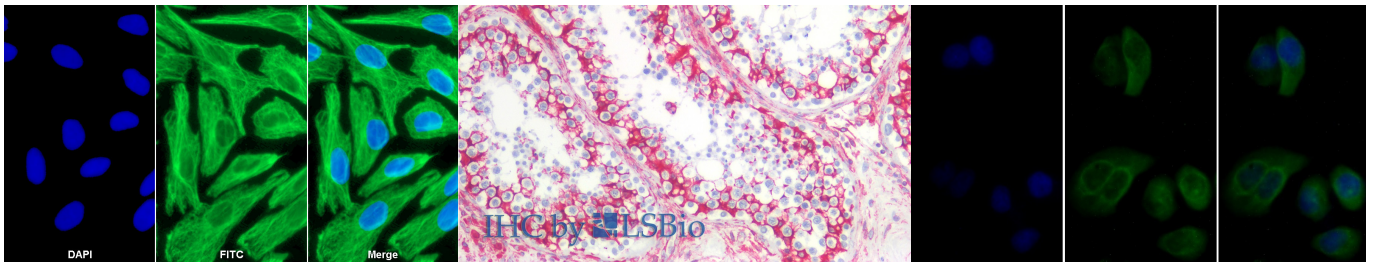
(Catalog: SAA544Mu19)



FITC and CY3 staining on IF;
 Sample: Human HepG2 cell;
 Primary Ab: 40µg/ml Mouse Anti-Human VIM Antibody
 Second Ab: 1µg/ml FITC-Linked Caprine Anti-Mouse IgG Polyclonal Antibody
 (Catalog: SAA544Mu18)

Cy3 staining on IF;
 Sample: Primary Canine Bladder Stromal Fibroblasts cell
 Primary Ab: 10µg/ml Mouse Anti-Human VIM Antibody
 Second Ab: 2µg/ml Cy3-Linked Caprine Anti-Mouse IgG Polyclonal Antibody
 (Catalog: SAA544Mu16)

Cy3 staining on IF;
 Sample: Primary Rabbit Neonatal Dermal Fibroblasts cell
 Primary Ab: 10µg/ml Mouse Anti-Human VIM Antibody
 Second Ab: 2µg/ml Cy3-Linked Caprine Anti-Mouse IgG Polyclonal Antibody
 (Catalog: SAA544Mu16)



FITC staining on IF;
 Sample: Primary Rabbit Myocardial Cells cell
 Primary Ab: 10µg/ml Mouse Anti-Human VIM Antibody
 Second Ab: 2µg/ml FITC-Linked Caprine Anti-Mouse IgG Polyclonal Antibody
 (Catalog: SAA544Mu18)

Vector Red staining on IHC-P;
 Samples: Human Testis Tissue;
 Primary Ab: 10µg/ml Mouse Anti-Human VIM Antibody
 Second Ab: 2µg/mL HRP-Linked Caprine Anti-Mouse IgG Monoclonal Antibody

FITC staining on IF; Samples: Human MCF7 Cells; Primary Ab: 40µg/ml Mouse Anti-Human VIM Antibody
 Second Ab: 1µg/ml FITC-Linked Caprine Anti-Mouse IgG Polyclonal Antibody (Catalog: SAA544Mu18)

[IMPORTANT NOTE]

The kit is designed for research use only, we will not be responsible for any issue if the kit was used in clinical diagnostic or any other procedures.