

**MPC231Mu01 100µg**  
**Phosphorylated Protein Kinase B Alpha (PKBa)**  
**Organism Species: Mus musculus (Mouse)**  
*Instruction manual*

FOR IN VITRO USE AND RESEARCH USE ONLY  
NOT FOR USE IN CLINICAL DIAGNOSTIC PROCEDURES

---

---

11th Edition (Revised in May, 2016)

## **[ PROPERTIES ]**

**Source:** Synthetic Peptide

**Residues:** Met458-Tyr474 with phosphoserine at 473 site.

**Purity:** >95%

**Traits:** Freeze-dried powder

**Buffer Formulation:** PBS, pH7.4.

**Predicted isoelectric point:** 5.4

**Predicted Molecular Mass:** 2208.4Da

**Applications:** Immunogen; Coating Antigen; Blocking Peptide; ELISA.

## **[ USAGE ]**

Reconstitute in PBS (pH7.4) to a concentration of 0.1-1.0 mg/mL. Do not vortex.

## **[ STORAGE AND STABILITY ]**

**Storage:** Avoid repeated freeze/thaw cycles.

Store at 2-8°C for one month.

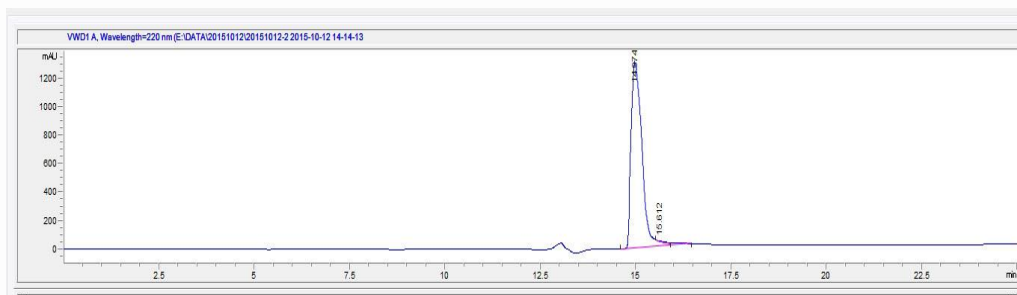
Aliquot and store at -80°C for 12 months.

**Stability Test:** The thermal stability is described by the loss rate. The loss rate was determined by accelerated thermal degradation test, that is, incubate the protein at 37°C for 48h, and no obvious degradation and precipitation were observed. The loss rate is less than 5% within the expiration date under appropriate storage condition.

**[ SEQUENCE ]**

MEC VDSERRPHFP QFS<sub>P</sub>Y

**[ IDENTIFICATION ]**



**Figure 1. HPLC**