

**PAA620Mu01**

**Polyclonal Antibody to A Disintegrin And Metalloprotease 8 (ADAM8)**

**Organism Species: *Mus musculus* (Mouse)**

***Instruction manual***

FOR RESEARCH USE ONLY

NOT FOR USE IN CLINICAL DIAGNOSTIC PROCEDURES

---

13th Edition (Revised in Aug, 2023)

**[ PROPERTIES ]**

**Source:** Polyclonal antibody preparation

**Host:** Rabbit

**Purification:** Antigen-specific affinity chromatography followed by Protein A affinity chromatography

**Traits:** Liquid

**Concentration:** 0.5mg/mL

**UOM:** 100µL

**Cross Reactivity:** Human

**Applications:** WB

**[ IMMUNOGEN ]**

**Immunogen:** Recombinant ADAM8 (Glu145~Cys493) expressed in *E.coli*

**Accession No.:** RPA620Mu01

**[ APPLICATIONS ]**

Western blotting: 0.01-2µg/mL;

Optimal working dilutions must be determined by end user.

**[ FORMULATION ]**

**Form & Buffer:** Supplied as solution form in 0.01M PBS, pH7.4, containing 0.05% Proclin-300, 50% glycerol.

**[ STORAGE AND STABILITY ]**

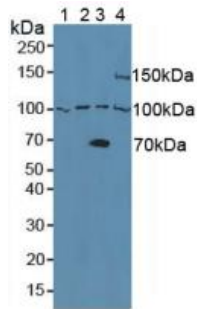
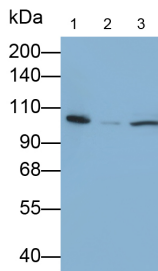
**Storage:** Avoid repeated freeze/thaw cycles.

Store at 4°C for frequent use.

Aliquot and store at -20°C for 24 months.

**Stability Test:** The thermal stability is described by the loss rate. The loss rate was determined by accelerated thermal degradation test, that is, incubate the protein at 37°C for 48h, and no obvious degradation and precipitation were observed. The loss rate is less than 5% within the expiration date under appropriate storage condition.

**[ IDENTIFICATION ]**



Western Blot; Samples: Lane1: Mouse Pancreas lysate; Lane2: RAW264.7 cell lysate; Lane3: Raji cell lysate; Primary Ab: 0.5µg/ml Rabbit Anti-Mouse ADAM8 Antibody Second Ab: 0.2µg/ml HRP-Linked Caprine Anti-Rabbit IgG Polyclonal Antibody (Catalog: SAA544Rb19)	Figure. Western Blot; Sample: Lane1: Human Raji Cells; Lane2: Mouse Raw264.7 Cells; Lane3: Human 293T Cells; Lane4: Mouse Pancreas Tissue. Primary Ab: 2µg/ml Rabbit Anti-Mouse ADAM8 Antibody Second Ab: 0.2µg/ml HRP-Linked Caprine Anti-Rabbit IgG Polyclonal Antibody (Catalog: SAA544Rb19)
--	--

**[ IMPORTANT NOTE ]**

The kit is designed for research use only, we will not be responsible for any issue if the kit was used in clinical diagnostic or any other procedures.