

PAB342Mi01

Polyclonal Antibody to Actin Alpha 2, Smooth Muscle (ACTa2)

Organism Species: *Mus musculus* (Mouse)

Instruction manual

FOR RESEARCH USE ONLY

NOT FOR USE IN CLINICAL DIAGNOSTIC PROCEDURES

13th Edition (Revised in Aug, 2023)

[PROPERTIES]

Source: Polyclonal antibody preparation

Host: Rabbit

Purification: Antigen-specific affinity chromatography followed by Protein A affinity chromatography

Traits: Liquid

Concentration: 0.5mg/mL

UOM: 100µL

Cross Reactivity: Human;Mouse;Rat;Cavia;Rabbit;Simian;Porcine;Bovine;Equine;Gallus

Applications: WB; IHC

[IMMUNOGEN]

Immunogen: Recombinant ACTa2 (Ile167~Phe377) expressed in *E.coli*

Accession No.: RPB342Mi01

[APPLICATIONS]

Western blotting: 0.01-5µg/mL;

Immunohistochemistry: 5-20µg/mL;

Optimal working dilutions must be determined by end user.

[FORMULATION]

Form & Buffer: Supplied as solution form in 0.01M PBS, pH7.4, containing 0.05% Proclin-300, 50% glycerol.

[STORAGE AND STABILITY]

Storage: Avoid repeated freeze/thaw cycles.

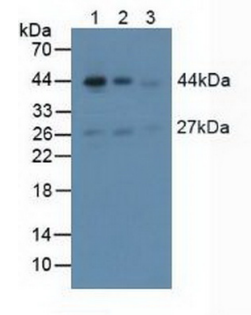
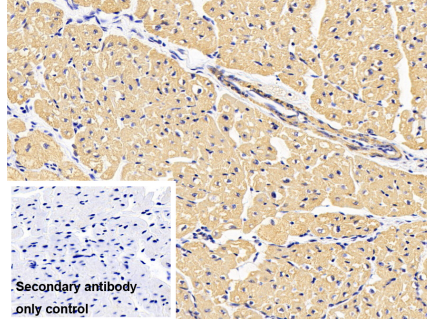
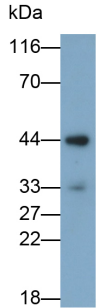
Store at 4°C for frequent use.

Aliquot and store at -20°C for 24 months.

Stability Test: The thermal stability is described by the loss rate. The loss rate was determined by accelerated thermal degradation test, that is, incubate the protein at 37°C for 48h, and no obvious degradation and precipitation were observed. The loss rate is less than 5% within the

expiration date under appropriate storage condition.

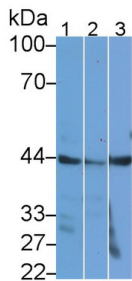
[IDENTIFICATION]



Western Blot; Sample: Porcine Skeletal muscle lysate Primary Ab: 0.2µg/ml Rabbit Anti-Multi-species ACTa2 Antibody Second Ab: 0.2µg/ml HRP-Linked Caprine Anti-Rabbit IgG Polyclonal Antibody (Catalog: SAA544Rb19)

DAB staining on IHC-P; Sample: Porcine Cardiac Muscle Tissue Primary Ab: 10µg/ml Rabbit Anti-Multi-species ACTa2 Antibody Control: Used PBS instead of primary antibody Second Ab: 2µg/ml HRP-Linked Caprine Anti-Rabbit IgG Polyclonal Antibody (Catalog: SAA544Rb19)

Figure. Western Blot; Sample: Lane1: Mouse Brain Tissue; Lane2: Mouse Heart Tissue; Lane3: Mouse Skeletal Muscle Tissue.



Western Blot; Sample: Lane1: Human Lung lysate; Lane2: Bovine Heart lysate; Lane3: Caprine Liver lysate; Primary Ab: 5µg/ml Rabbit Anti-Multi-species ACTA2 Antibody Second Ab: 0.2µg/ml HRP-Linked Caprine Anti-Rabbit IgG Polyclonal Antibody (Catalog: SAA544Rb19)

[IMPORTANT NOTE]

The kit is designed for research use only, we will not be responsible for any issue if the kit was used in clinical diagnostic or any other procedures.