

**PAA376Mu01**

**Polyclonal Antibody to Actinin Alpha 2 (ACTN2)**

**Organism Species: *Mus musculus* (Mouse)**

***Instruction manual***

FOR RESEARCH USE ONLY

NOT FOR USE IN CLINICAL DIAGNOSTIC PROCEDURES

---

13th Edition (Revised in Aug, 2023)

### [ **PROPERTIES** ]

**Source:** Polyclonal antibody preparation

**Host:** Rabbit

**Purification:** Antigen-specific affinity chromatography followed by Protein A affinity chromatography

**Traits:** Liquid

**Concentration:** 0.5mg/mL

**UOM:** 100µL

**Cross Reactivity:** Human;Rat

**Applications:** WB; IHC

### [ **IMMUNOGEN** ]

**Immunogen:** Recombinant ACTN2 (Met1~His254) expressed in *E.coli*

**Accession No.:** RPA376Mu01

### [ **APPLICATIONS** ]

Western blotting: 0.01-2µg/mL;

Immunohistochemistry: 5-20µg/mL;

Optimal working dilutions must be determined by end user.

### [ **FORMULATION** ]

**Form & Buffer:** Supplied as solution form in 0.01M PBS, pH7.4, containing 0.05% Proclin-300, 50% glycerol.

### [ **STORAGE AND STABILITY** ]

**Storage:** Avoid repeated freeze/thaw cycles.

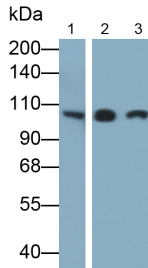
Store at 4°C for frequent use.

Aliquot and store at -20°C for 24 months.

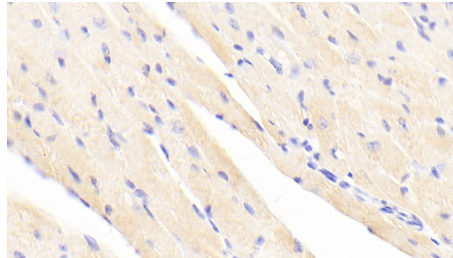
**Stability Test:** The thermal stability is described by the loss rate. The loss rate was determined by accelerated thermal degradation test, that is, incubate the protein at 37°C for 48h, and no obvious degradation and precipitation were observed. The loss rate is less than 5% within the

expiration date under appropriate storage condition.

**[ IDENTIFICATION ]**

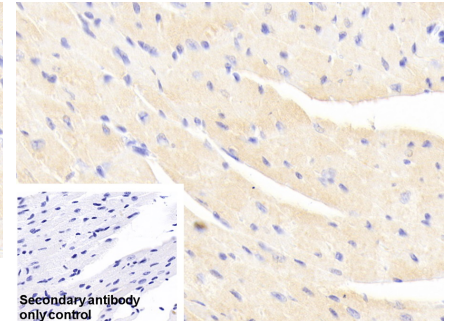


Western Blot; Samples: Lane1: C2C12 cell lysate; Lane2: Rat Heart lysate; Lane3: Rat Skeletal muscle lysate; Primary Ab: 1µg/ml Rabbit Anti-Mouse ACTN2 Antibody Second Ab: 0.2µg/ml HRP-Linked Caprine Anti-Rabbit IgG Polyclonal Antibody (Catalog: SAA544Rb19)



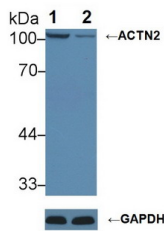
DAB staining on IHC-P; Samples:

Mouse Cardiac Muscle Tissue; Primary Ab: 20µg/ml Rabbit Anti-Mouse ACTN2 Antibody Second Ab: 2µg/ml HRP-Linked Caprine Anti-Rabbit IgG Polyclonal Antibody (Catalog: SAA544Rb19)



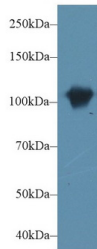
DAB staining on IHC-P;

Sample: Mouse Cardiac Muscle Tissue Primary Ab: 20µg/ml Rabbit Anti-Mouse ACTN2 Antibody Control: Used PBS instead of primary antibody Second Ab: 2µg/ml HRP-Linked Caprine Anti-Rabbit IgG Polyclonal Antibody (Catalog: SAA544Rb19)



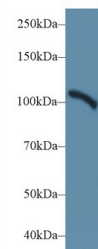
Knockout Verification:

Lane 1: Wild-type HeLa cell lysate; Lane 2: ACTN2 knockout HeLa cell lysate; Predicted MW: 104kDa Observed MW: 104kDa Primary Ab: 1µg/ml Rabbit Anti-Mouse ACTN2 Antibody Second Ab: 0.2µg/ml HRP-Linked



Western Blot; Sample: Mouse Skeletal muscle lysate;

Primary Ab: 1µg/ml Rabbit Anti-Mouse ACTN2 Antibody Second Ab: 0.2µg/ml HRP-Linked Caprine Anti-Rabbit IgG Polyclonal Antibody (Catalog: SAA544Rb19)



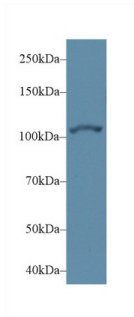
Western Blot; Sample: Mouse Lung lysate;

Primary Ab: 1µg/ml Rabbit Anti-Mouse ACTN2 Antibody Second Ab: 0.2µg/ml HRP-Linked Caprine Anti-Rabbit IgG Polyclonal Antibody (Catalog: SAA544Rb19)

Caprine Anti-Rabbit IgG Polyclonal

Antibody

(Catalog: SAA544Rb19)



Western Blot; Sample: Human Hela cell  
lysate;

Primary Ab: 1 $\mu$ g/ml Rabbit Anti-Mouse  
ACTN2 Antibody

Second Ab: 0.2 $\mu$ g/mL HRP-Linked

Caprine Anti-Rabbit IgG Polyclonal  
Antibody

(Catalog: SAA544Rb19)

### [ **IMPORTANT NOTE** ]

The kit is designed for research use only, we will not be responsible for any issue if the kit was used in clinical diagnostic or any other procedures.