

PAD669Hu01

**Polyclonal Antibody to Acyl Coenzyme A Synthetase Medium Chain Family, Member 1
(ACSM1)**

Organism Species: *Homo sapiens (Human)*

Instruction manual

FOR RESEARCH USE ONLY
NOT FOR USE IN CLINICAL DIAGNOSTIC PROCEDURES

13th Edition (Revised in Aug, 2023)

[PROPERTIES]

Source: Polyclonal antibody preparation

Host: Rabbit

Purification: Antigen-specific affinity chromatography followed by Protein A affinity chromatography

Traits: Liquid

Concentration: 0.5mg/mL

UOM: 100 μ L

Cross Reactivity: Mouse;Rat;Porcine

Applications: WB; IHC

[IMMUNOGEN]

Immunogen: Recombinant ACSM1 (Ser370~Pro557) expressed in *E.coli*

Accession No.: RPD669Hu01

[APPLICATIONS]

Western blotting: 0.01-2 μ g/mL;

immunohistochemistry: 5-20 μ g/mL;

Optimal working dilutions must be determined by end user.

[FORMULATION]

Form & Buffer: Supplied as solution form in 0.01M PBS, pH7.4, containing 0.05% Proclin-300, 50% glycerol.

[STORAGE AND STABILITY]

Storage: Avoid repeated freeze/thaw cycles.

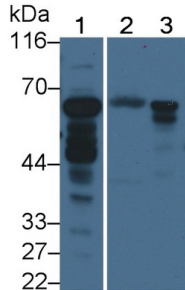
Store at 4°C for frequent use.

Aliquot and store at -20°C for 24 months.

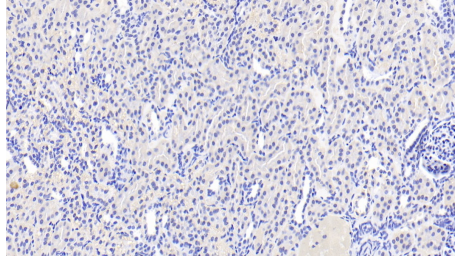
Stability Test: The thermal stability is described by the loss rate. The loss rate was determined by accelerated thermal degradation test, that is, incubate the protein at 37°C for 48h, and no obvious degradation and precipitation were observed. The loss rate is less than 5% within the

expiration date under appropriate storage condition.

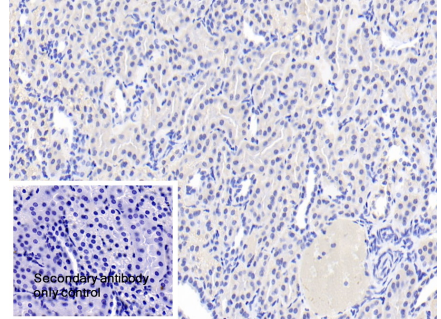
[IDENTIFICATION]



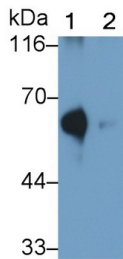
Western Blot; Sample: Lane1: Porcine Liver lysate; Lane2: Rat Eye lysate; Lane3: Mouse Gallbladder lysate
 Primary Ab: 2µg/ml Rabbit Anti-Human ACSM1 Antibody Second Ab: 0.2µg/mL HRP-Linked Caprine Anti-Rabbit IgG Polyclonal Antibody (Catalog: SAA544Rb19)



DAB staining on IHC-P; Samples: Human Kidney Tissue; Primary Ab: 20µg/ml Rabbit Anti-Human ACSM1 Antibody Second Ab: 2µg/mL HRP-Linked Caprine Anti-Rabbit IgG Polyclonal Antibody (Catalog: SAA544Rb19)



DAB staining on IHC-P; Sample: Human Kidney Tissue Primary Ab: 20µg/ml Rabbit Anti-Human ACSM1 Antibody Control: Used PBS instead of primary antibody Second Ab: 2µg/ml HRP-Linked Caprine Anti-Rabbit IgG Polyclonal Antibody (Catalog: SAA544Rb19)



Western Blot; Sample: Lane1: Rat Liver lysate; Lane2: Mouse Liver lysate
 Primary Ab: 0.01µg/ml Rabbit Anti-Human ACSM1 Antibody
 Second Ab: 0.2µg/mL HRP-Linked Caprine Anti-Rabbit IgG Polyclonal Antibody (Catalog: SAA544Rb19)

[IMPORTANT NOTE]

The kit is designed for research use only, we will not be responsible for any issue if the kit was used in clinical diagnostic or any other procedures.