

**PAC282Hu01**

**Polyclonal Antibody to Adhesion Regulating Molecule 1 (ADRM1)**

**Organism Species: *Homo sapiens (Human)***

***Instruction manual***

FOR RESEARCH USE ONLY

NOT FOR USE IN CLINICAL DIAGNOSTIC PROCEDURES

---

13th Edition (Revised in Aug, 2023)

### [ **PROPERTIES** ]

**Source:** Polyclonal antibody preparation

**Host:** Rabbit

**Purification:** Antigen-specific affinity chromatography followed by Protein A affinity chromatography

**Traits:** Liquid

**Concentration:** 0.5mg/mL

**UOM:** 100µL

**Cross Reactivity:** Rat

**Applications:** WB; IHC; ICC/IF

### [ **IMMUNOGEN** ]

**Immunogen:** Recombinant ADRM1 (Thr2~Thr369) expressed in *E.coli*

**Accession No.:** RPC282Hu01

### [ **APPLICATIONS** ]

Western blotting: 0.01-2µg/mL;

Immunohistochemistry: 5-20µg/mL;

Immunofluorescence: 5-20µg/mL;

Optimal working dilutions must be determined by end user.

### [ **FORMULATION** ]

**Form & Buffer:** Supplied as solution form in 0.01M PBS, pH7.4, containing 0.05% Proclin-300, 50% glycerol.

### [ **STORAGE AND STABILITY** ]

**Storage:** Avoid repeated freeze/thaw cycles.

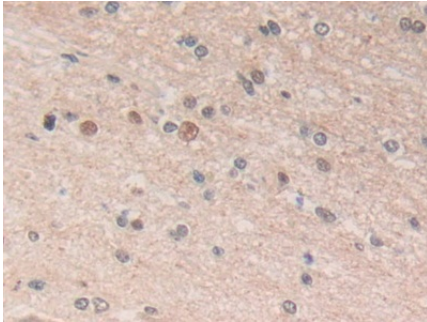
Store at 4°C for frequent use.

Aliquot and store at -20°C for 24 months.

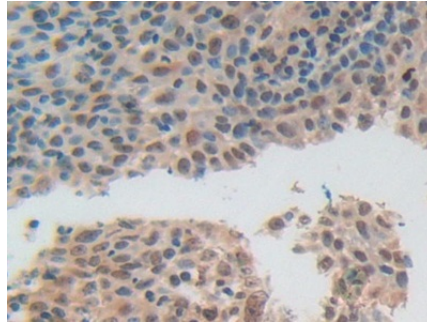
**Stability Test:** The thermal stability is described by the loss rate. The loss rate was determined by accelerated thermal degradation test, that is, incubate the protein at 37°C for 48h, and no

obvious degradation and precipitation were observed. The loss rate is less than 5% within the expiration date under appropriate storage condition.

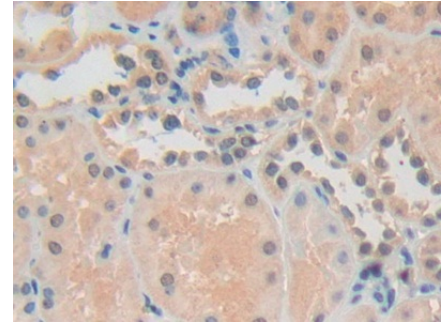
**[ IDENTIFICATION ]**



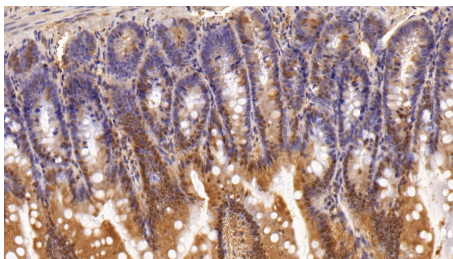
DAB staining on IHC-P; Samples: Human Cerebrum Tissue; Primary Ab: 10µg/ml Rabbit Anti-Human ADRM1 Antibody Second Ab: 2µg/mL HRP-Linked Caprine Anti-Rabbit IgG Polyclonal Antibody (Catalog: SAA544Rb19)



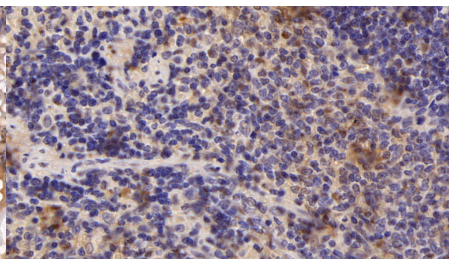
DAB staining on IHC-P; Samples: Human Skin cancer Tissue; Primary Ab: 10µg/ml Rabbit Anti-Human ADRM1 Antibody Second Ab: 2µg/mL HRP-Linked Caprine Anti-Rabbit IgG Polyclonal Antibody (Catalog: SAA544Rb19)



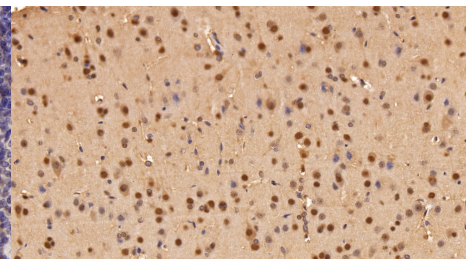
DAB staining on IHC-P; Samples: Human Kidney Tissue; Primary Ab: 10µg/ml Rabbit Anti-Human ADRM1 Antibody Second Ab: 2µg/mL HRP-Linked Caprine Anti-Rabbit IgG Polyclonal Antibody (Catalog: SAA544Rb19)



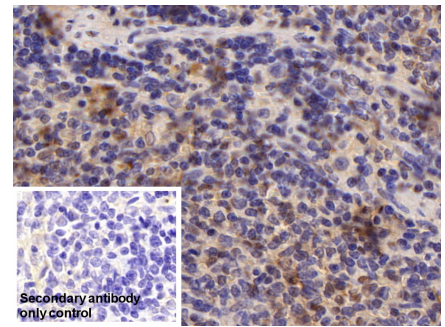
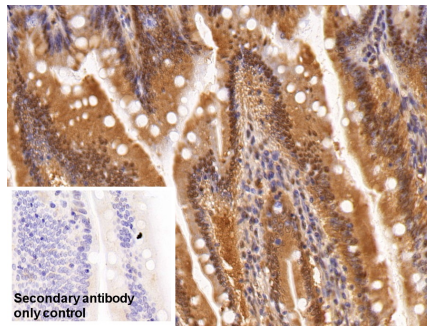
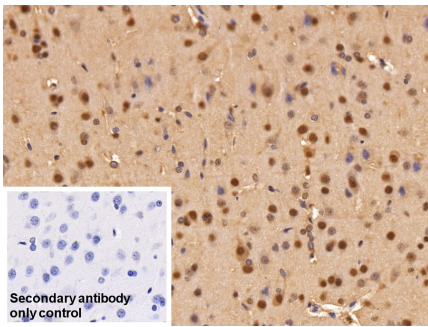
DAB staining on IHC-P; Sample: Rat Small intestine Tissue; Primary Ab: 10ug/ml Rabbit Anti-Human ADRM1 Antibody Second Ab: 2µg/mL HRP-Linked Caprine Anti-Rabbit IgG Polyclonal Antibody (Catalog: SAA544Rb19)



DAB staining on IHC-P; Sample: Rat Spleen Tissue; Primary Ab: 10ug/ml Rabbit Anti-Human ADRM1 Antibody Second Ab: 2µg/mL HRP-Linked Caprine Anti-Rabbit IgG Polyclonal Antibody (Catalog: SAA544Rb19)



DAB staining on IHC-P; Sample: Rat Cerebrum Tissue; Primary Ab: 10ug/ml Rabbit Anti-Human ADRM1 Antibody Second Ab: 2µg/mL HRP-Linked Caprine Anti-Rabbit IgG Polyclonal Antibody (Catalog: SAA544Rb19)



DAB staining on IHC-P;

Sample: Rat Cerebrum Tissue

Primary Ab: 10µg/ml Rabbit Anti-Human ADRM1 Antibody

Control: Used PBS instead of primary antibody

Second Ab: 2µg/ml HRP-Linked Caprine Anti-Rabbit IgG Polyclonal Antibody

(Catalog: SAA544Rb19)

DAB staining on IHC-P;

Sample: Rat Small intestine Tissue

Primary Ab: 10µg/ml Rabbit Anti-Human ADRM1 Antibody

Control: Used PBS instead of primary antibody

Second Ab: 2µg/ml HRP-Linked Caprine Anti-Rabbit IgG Polyclonal Antibody

(Catalog: SAA544Rb19)

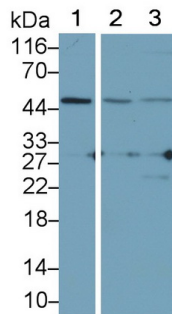
Sample: Rat Spleen Tissue

Primary Ab: 10µg/ml Rabbit Anti-Human ADRM1 Antibody

Control: Used PBS instead of primary antibody

Second Ab: 2µg/ml HRP-Linked Caprine Anti-Rabbit IgG Polyclonal Antibody

(Catalog: SAA544Rb19)



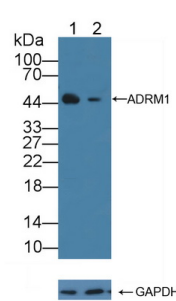
Western Blot; Sample: Lane1: Rat Testis lysate; Lane2: HeLa cell lysate;

Lane3: 293T cell lysate

Primary Ab: 0.1µg/ml Rabbit Anti-Human ADRM1 Antibody

Second Ab: 0.2µg/mL HRP-Linked Caprine Anti-Rabbit IgG Polyclonal Antibody

(Catalog: SAA544Rb19)



Knockout Verification:

Lane 1: Wild-type 293T cell lysate;

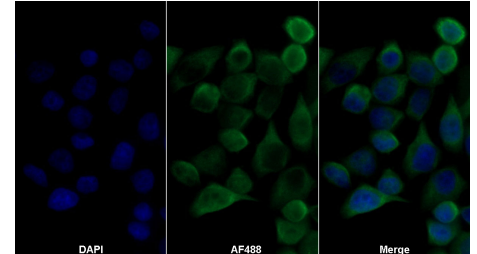
Lane 2: ADRM1 knockout 293T cell lysate;

Predicted MW: 42kd

Observed MW: 45kd

Primary Ab: 2µg/ml Rabbit Anti-Human ADRM1 Antibody

Second Ab: 0.2µg/mL HRP-Linked Caprine Anti-Rabbit IgG Polyclonal Antibody



AF488 staining on IF;

Sample: MCF7 cell

Primary Ab: 20µg/ml Rabbit Anti-Human ADRM1 Antibody

Second Ab: 2µg/ml AF488-Linked Caprine Anti-Rabbit IgG Polyclonal Antibody

(Catalog: SAA544Rb11)

(Catalog: SAA544Rb19)

**[ IMPORTANT NOTE ]**

The kit is designed for research use only, we will not be responsible for any issue if the kit was used in clinical diagnostic or any other procedures.