

**PAB028Po01**

**Polyclonal Antibody to Albumin (ALB)**

**Organism Species: *Sus scrofa*; *Porcine (Pig)***

***Instruction manual***

FOR RESEARCH USE ONLY

NOT FOR USE IN CLINICAL DIAGNOSTIC PROCEDURES

---

13th Edition (Revised in Aug, 2023)

**[ PROPERTIES ]**

**Source:** Polyclonal antibody preparation

**Host:** Rabbit

**Purification:** Antigen-specific affinity chromatography followed by Protein A affinity chromatography

**Traits:** Liquid

**Concentration:** 0.5mg/mL

**UOM:** 100µL

**Cross Reactivity:** N/A

**Applications:** WB; IHC

**[ IMMUNOGEN ]**

**Immunogen:** Native ALB

**Accession No.:** NPB028Po01

**[ APPLICATIONS ]**

Western blotting: 0.01-2µg/mL;

Immunohistochemistry: 5-20µg/mL;

Optimal working dilutions must be determined by end user.

**[ FORMULATION ]**

**Form & Buffer:** Supplied as solution form in 0.01M PBS, pH7.4, containing 0.05% Proclin-300, 50% glycerol.

**[ STORAGE AND STABILITY ]**

**Storage:** Avoid repeated freeze/thaw cycles.

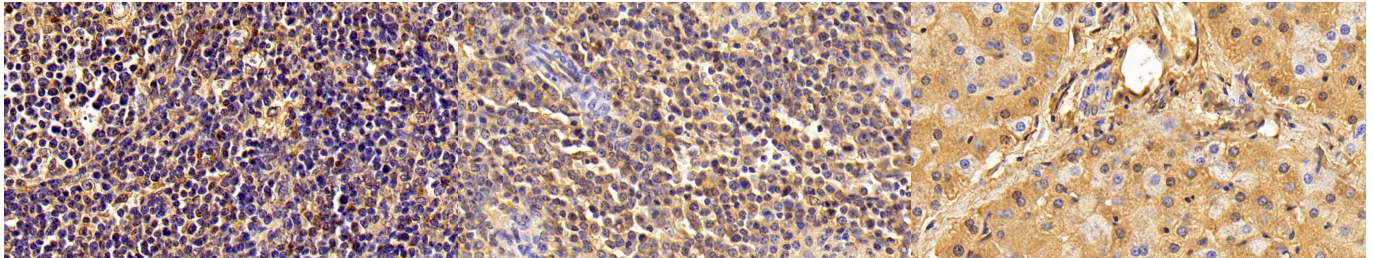
Store at 4°C for frequent use.

Aliquot and store at -20°C for 24 months.

**Stability Test:** The thermal stability is described by the loss rate. The loss rate was determined by accelerated thermal degradation test, that is, incubate the protein at 37°C for 48h, and no obvious degradation and precipitation were observed. The loss rate is less than 5% within the

expiration date under appropriate storage condition.

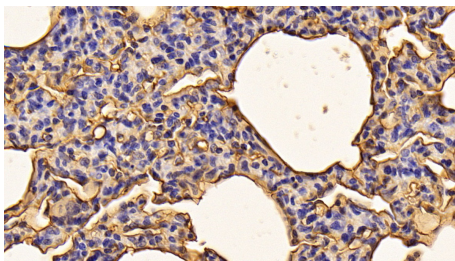
**[ IDENTIFICATION ]**



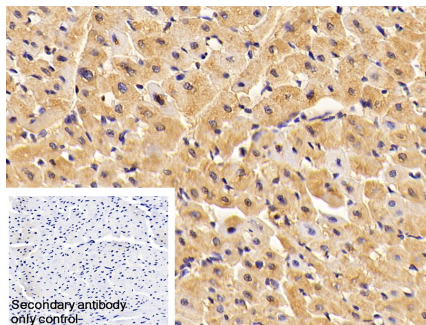
DAB staining on IHC-P; Samples:  
 Porcine Cardiac Muscle Tissue;  
 Primary Ab: 10 $\mu$ g/ml Rabbit Anti-  
 Porcine ALB Antibody Second Ab:  
 2 $\mu$ g/mL HRP-Linked Caprine Anti-  
 Rabbit IgG Polyclonal Antibody  
 (Catalog: SAA544Rb19)

DAB staining on IHC-P;  
 Samples: Porcine Spleen Tissue;  
 Primary Ab: 10 $\mu$ g/ml Rabbit Anti-  
 Porcine ALB Antibody  
 Second Ab: 2 $\mu$ g/mL HRP-Linked  
 Caprine Anti-Rabbit IgG Polyclonal  
 Antibody  
 (Catalog: SAA544Rb19)

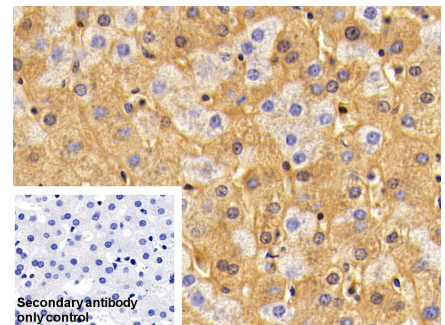
DAB staining on IHC-P;  
 Samples: Porcine Liver Tissue;  
 Primary Ab: 10 $\mu$ g/ml Rabbit Anti-  
 Porcine ALB Antibody  
 Second Ab: 2 $\mu$ g/mL HRP-Linked  
 Caprine Anti-Rabbit IgG Polyclonal  
 Antibody  
 (Catalog: SAA544Rb19)



DAB staining on IHC-P;  
 Samples: Porcine Lung Tissue;  
 Primary Ab: 10 $\mu$ g/ml Rabbit Anti-  
 Porcine ALB Antibody  
 Second Ab: 2 $\mu$ g/mL HRP-Linked  
 Caprine Anti-Rabbit IgG Polyclonal  
 Antibody  
 (Catalog: SAA544Rb19)

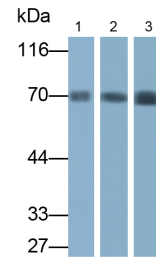
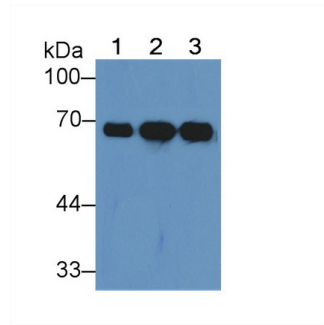
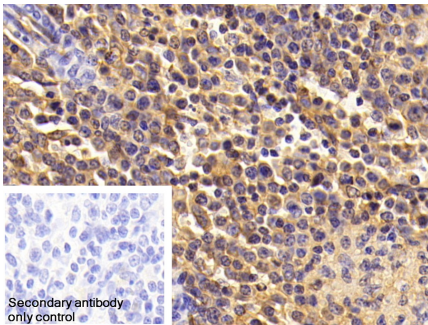


DAB staining on IHC-P;  
 Sample: Porcine Cardiac Muscle  
 Tissue  
 Primary Ab: 10 $\mu$ g/ml Rabbit Anti-  
 Porcine ALB Antibody  
 Control: Used PBS instead of primary  
 antibody  
 Second Ab: 2 $\mu$ g/ml HRP-Linked  
 Caprine Anti-Rabbit IgG Polyclonal  
 Antibody



DAB staining on IHC-P;  
 Sample: Porcine Liver Tissue  
 Primary Ab: 10 $\mu$ g/ml Rabbit Anti-  
 Porcine ALB Antibody  
 Control: Used PBS instead of primary  
 antibody  
 Second Ab: 2 $\mu$ g/ml HRP-Linked  
 Caprine Anti-Rabbit IgG Polyclonal  
 Antibody  
 (Catalog: SAA544Rb19)

(Catalog: SAA544Rb19)



DAB staining on IHC-P;  
 Sample: Porcine Spleen Tissue  
 Primary Ab: 10µg/ml Rabbit Anti-Porcine ALB Antibody  
 Control: Used PBS instead of primary antibody  
 Second Ab: 2µg/ml HRP-Linked Caprine Anti-Rabbit IgG Polyclonal Antibody  
 (Catalog: SAA544Rb19)

Western Blot; Sample: Lane1: Porcine Liver lysate; Lane2: Porcine Cerebrum lysate; Lane3: Porcine Lung lysate  
 Primary Ab: 2µg/mL Rabbit Anti-Porcine Albumin Antibody  
 Second Ab: 0.2µg/mL HRP-Linked Caprine Anti-Rabbit IgG Polyclonal Antibody  
 (Catalog: SAA544Rb19)

Western Blot; Samples: Lane1: Porcine Serum; Lane2: Porcine Liver lysate; Lane3: Porcine Plasma;  
 Primary Ab: 0.01µg/ml Rabbit Anti-Porcine ALB Antibody  
 Second Ab: 0.2µg/ml HRP-Linked Caprine Anti-Rabbit IgG Polyclonal Antibody  
 (Catalog: SAA544Rb19)

**[ IMPORTANT NOTE ]**

The kit is designed for research use only, we will not be responsible for any issue if the kit was used in clinical diagnostic or any other procedures.