

**PAB091Hu01**

**Polyclonal Antibody to Alkaline Phosphatase, Tissue-nonspecific (ALPL)**

**Organism Species: *Homo sapiens* (Human)**

***Instruction manual***

FOR RESEARCH USE ONLY

NOT FOR USE IN CLINICAL DIAGNOSTIC PROCEDURES

---

13th Edition (Revised in Aug, 2023)

### **[ PROPERTIES ]**

**Source:** Polyclonal antibody preparation

**Host:** Rabbit

**Purification:** Antigen-specific affinity chromatography followed by Protein A affinity chromatography

**Traits:** Liquid

**Concentration:** 0.5mg/mL

**UOM:** 100µL

**Cross Reactivity:** Mouse;Porcine.

**Applications:** WB; IHC

### **[ IMMUNOGEN ]**

**Immunogen:** Recombinant ALPL (Leu18~Arg335) expressed in *E.coli*

**Accession No.:** RPB091Hu01

### **[ APPLICATIONS ]**

Western blotting: 0.01-3µg/mL;

Immunohistochemistry: 5-20µg/mL;

Optimal working dilutions must be determined by end user.

### **[ FORMULATION ]**

**Form & Buffer:** Supplied as solution form in 0.01M PBS, pH7.4, containing 0.05% Proclin-300, 50% glycerol.

### **[ STORAGE AND STABILITY ]**

**Storage:** Avoid repeated freeze/thaw cycles.

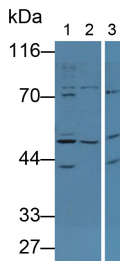
Store at 4°C for frequent use.

Aliquot and store at -20°C for 24 months.

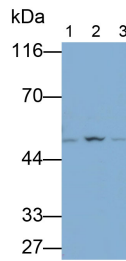
**Stability Test:** The thermal stability is described by the loss rate. The loss rate was determined by accelerated thermal degradation test, that is, incubate the protein at 37°C for 48h, and no obvious degradation and precipitation were observed. The loss rate is less than 5% within the

expiration date under appropriate storage condition.

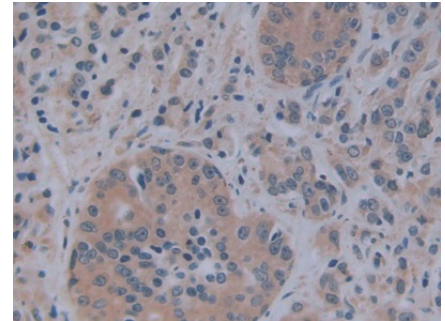
**[ IDENTIFICATION ]**



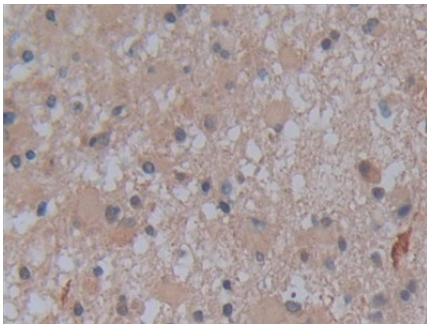
Western Blot; Samples: Lane1: HeLa cell lysate; Lane2: Porcine Liver lysate; Lane3: Mouse Liver lysate;  
 Primary Ab: 3µg/ml Rabbit Anti-Human ALPL Antibody  
 Second Ab: 0.2µg/ml HRP-Linked Caprine Anti-Rabbit IgG Polyclonal Antibody  
 (Catalog: SAA544Rb19)



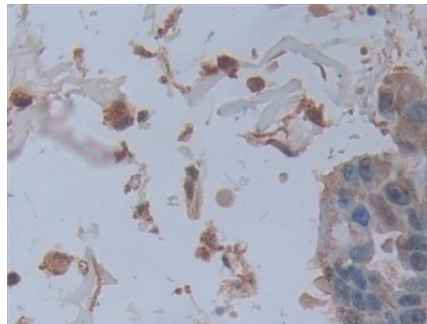
Western Blot; Samples: Lane1: HeLa cell lysate; Lane2: 293T cell lysate; Lane3: LO2 cell lysate;  
 Primary Ab: 0.1µg/ml Rabbit Anti-Human ALPL Antibody  
 Second Ab: 0.2µg/ml HRP-Linked Caprine Anti-Rabbit IgG Polyclonal Antibody  
 (Catalog: SAA544Rb19)



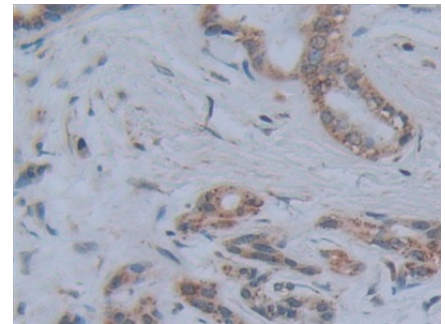
DAB staining on IHC-P;  
 Samples: Human Prostate cancer Tissue;  
 Primary Ab: 10µg/ml Rabbit Anti-Human ALPL Antibody  
 Second Ab: 2µg/mL HRP-Linked Caprine Anti-Rabbit IgG Polyclonal Antibody  
 (Catalog: SAA544Rb19)



DAB staining on IHC-P;  
 Samples: Human Glioma Tissue;  
 Primary Ab: 10µg/ml Rabbit Anti-Human ALPL Antibody  
 Second Ab: 2µg/mL HRP-Linked Caprine Anti-Rabbit IgG Polyclonal Antibody  
 (Catalog: SAA544Rb19)



DAB staining on IHC-P;  
 Samples: Human Breast cancer Tissue;  
 Primary Ab: 10µg/ml Rabbit Anti-Human ALPL Antibody  
 Second Ab: 2µg/mL HRP-Linked Caprine Anti-Rabbit IgG Polyclonal Antibody  
 (Catalog: SAA544Rb19)



DAB staining on IHC-P;  
 Samples: Human Pancreas Tissue;  
 Primary Ab: 10µg/ml Rabbit Anti-Human ALPL Antibody  
 Second Ab: 2µg/mL HRP-Linked Caprine Anti-Rabbit IgG Polyclonal Antibody  
 (Catalog: SAA544Rb19)

**[ IMPORTANT NOTE ]**

The kit is designed for research use only, we will not be responsible for any issue if the kit was used in clinical diagnostic or any other procedures.