

PAB699Mu01

Polyclonal Antibody to Angiopoietin Like Protein 3 (ANGPTL3)

Organism Species: *Mus musculus* (Mouse)

Instruction manual

FOR RESEARCH USE ONLY

NOT FOR USE IN CLINICAL DIAGNOSTIC PROCEDURES

13th Edition (Revised in Aug, 2023)

[PROPERTIES]

Source: Polyclonal antibody preparation

Host: Rabbit

Purification: Antigen-specific affinity chromatography followed by Protein A affinity chromatography

Traits: Liquid

Concentration: 0.5mg/mL

UOM: 100µL

Cross Reactivity: Porcine

Applications: WB; IHC

[IMMUNOGEN]

Immunogen: Recombinant ANGPTL3 (Thr237~Thr455) expressed in *E.coli*

Accession No.: RPB699Mu01

[APPLICATIONS]

Western blotting: 0.5-2µg/mL;

Immunohistochemistry: 5-20µg/mL;

Optimal working dilutions must be determined by end user.

[FORMULATION]

Form & Buffer: Supplied as solution form in PBS, pH7.4, containing 0.02% NaN₃, 50% glycerol.

[STORAGE AND STABILITY]

Storage: Avoid repeated freeze/thaw cycles.

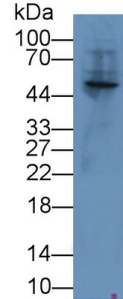
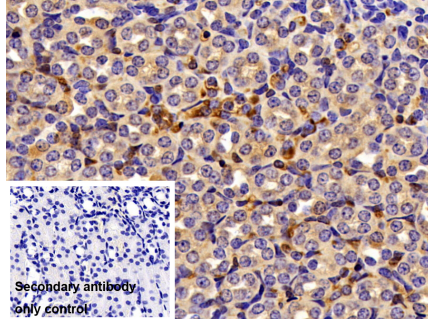
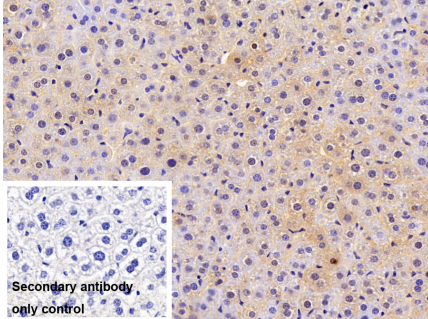
Store at 4°C for frequent use.

Aliquot and store at -20°C for 24 months.

Stability Test: The thermal stability is described by the loss rate. The loss rate was determined by accelerated thermal degradation test, that is, incubate the protein at 37°C for 48h, and no obvious degradation and precipitation were observed. The loss rate is less than 5% within the

expiration date under appropriate storage condition.

[IDENTIFICATION]



DAB staining on IHC-P; Sample: Mouse

DAB staining on IHC-P;

Western Blot; Sample: Mouse Placenta

Liver Tissue Primary Ab: 10µg/ml

Sample: Mouse Kidney Tissue

lysate;

Rabbit Anti-Mouse ANGPTL3 Antibody

Primary Ab: 10µg/ml Rabbit Anti-Mouse

Primary Ab: 1µg/ml Rabbit Anti-Mouse

Control: Used PBS instead of primary

ANGPTL3 Antibody

ANGPTL3 Antibody

antibody Second Ab: 2?g/ml HRP-

Control: Used PBS instead of primary

Second Ab: 0.2µg/mL HRP-Linked

Linked Caprine Anti-Rabbit IgG

antibody

Caprine Anti-Rabbit IgG Polyclonal

Polyclonal Antibody (Catalog:

Second Ab: 2?g/ml HRP-Linked

Antibody

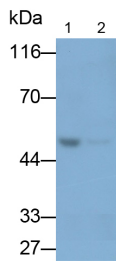
SAA544Rb19)

Caprine Anti-Rabbit IgG Polyclonal

(Catalog: SAA544Rb19)

Antibody

(Catalog: SAA544Rb19)



Western Blot; Samples: Lane1: Mouse

Liver lysate; Lane2: Porcine Liver

lysate;

Primary Ab: 0.2µg/ml Rabbit Anti-

Mouse ANGPTL3 Antibody

Second Ab: 0.2?g/ml HRP-Linked

Caprine Anti-Rabbit IgG Polyclonal

Antibody

(Catalog: SAA544Rb19)

[IMPORTANT NOTE]

The kit is designed for research use only, we will not be responsible for any issue if the kit was used in clinical diagnostic or any other procedures.