

**PAA259Bo01**

**Polyclonal Antibody to Annexin V (ANXA5)**

**Organism Species: *Bos taurus*; Bovine (Cattle)**

***Instruction manual***

FOR RESEARCH USE ONLY

NOT FOR USE IN CLINICAL DIAGNOSTIC PROCEDURES

---

13th Edition (Revised in Aug, 2023)

**[ PROPERTIES ]**

**Source:** Polyclonal antibody preparation

**Host:** Rabbit

**Purification:** Antigen-specific affinity chromatography followed by Protein A affinity chromatography

**Traits:** Liquid

**Concentration:** 0.5mg/mL

**UOM:** 100µL

**Cross Reactivity:** Human;Mouse;Porcine

**Applications:** WB; IHC; ICC/IF

**[ IMMUNOGEN ]**

**Immunogen:** Recombinant ANXA5 (Met1~Asp265) expressed in *E.coli*

**Accession No.:** RPA259Bo01

**[ APPLICATIONS ]**

Western blotting: 0.01-2µg/mL;

Immunohistochemistry: 5-20µg/mL;

Immunofluorescence: 5-20µg/mL;

Optimal working dilutions must be determined by end user.

**[ FORMULATION ]**

**Form & Buffer:** Supplied as solution form in PBS, pH7.4, containing 0.02% NaN<sub>3</sub>, 50% glycerol.

**[ STORAGE AND STABILITY ]**

**Storage:** Avoid repeated freeze/thaw cycles.

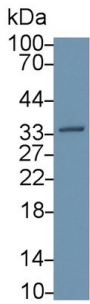
Store at 4°C for frequent use.

Aliquot and store at -20°C for 24 months.

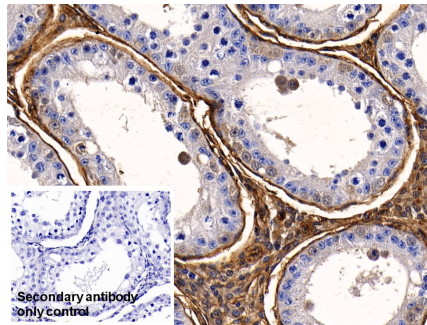
**Stability Test:** The thermal stability is described by the loss rate. The loss rate was determined by accelerated thermal degradation test, that is, incubate the protein at 37°C for 48h, and no

obvious degradation and precipitation were observed. The loss rate is less than 5% within the expiration date under appropriate storage condition.

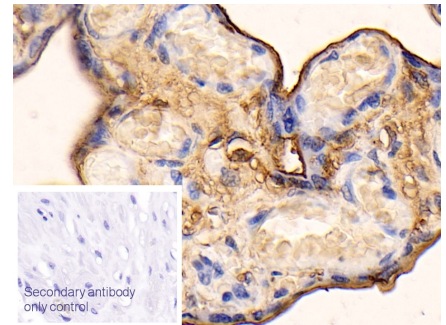
**[ IDENTIFICATION ]**



Western Blot; Sample: Human A431 cell lysate; Primary Ab: 1µg/ml Rabbit Anti-Bovine ANXA5 Antibody Second Ab: 0.2µg/mL HRP-Linked Caprine Anti-Rabbit IgG Polyclonal Antibody (Catalog: SAA544Rb19)

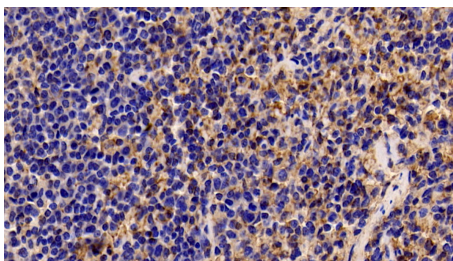


DAB staining on IHC-P; Sample: Bovine Testis Tissue Primary Ab: 20µg/ml Rabbit Anti-Bovine ANXA5 Antibody Control: Used PBS instead of primary antibody Second Ab: 2µg/ml HRP-Linked Caprine Anti-Rabbit IgG Polyclonal Antibody (Catalog: SAA544Rb19)

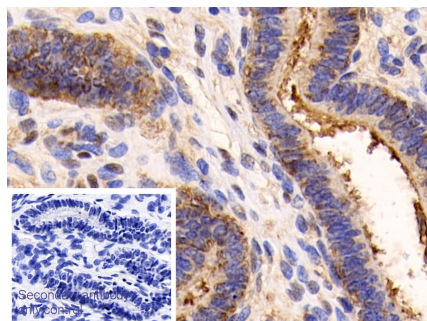


DAB staining on IHC-P; Sample: Human Placenta Tissue; Primary Ab: 20µg/ml Rabbit Anti-Bovine ANXA5 Antibody Second Ab: 2µg/mL HRP-Linked Caprine Anti-Rabbit IgG Polyclonal Antibody (Catalog: SAA544Rb19)

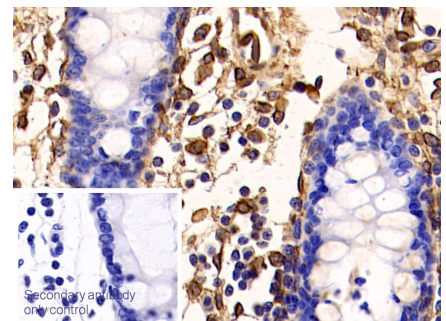
Secondary antibody only control: Used PBS instead of primary antibody, Second Ab: 2µg/mL HRP-Linked Caprine Anti-Rabbit IgG Polyclonal Antibody (Catalog: SAA544Rb19)



DAB staining on IHC-P; Sample: Porcine Spleen Tissue; Primary Ab: 20ug/ml Rabbit Anti-Bovine ANXA5 Antibody Second Ab: 2µg/mL HRP-Linked

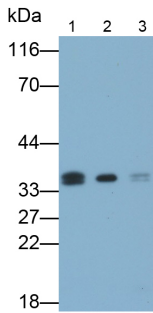


DAB staining on IHC-P; Sample: Porcine Uterus Tissue; Primary Ab: 20µg/ml Rabbit Anti-Bovine



DAB staining on IHC-P; Sample: Porcine Colon Tissue; Primary Ab: 20µg/ml Rabbit Anti-Bovine

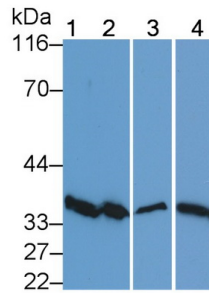
Caprine Anti-Rabbit IgG Polyclonal  
Antibody  
(Catalog: SAA544Rb19)



Western Blot; Samples: Lane1: Bovine Testis lysate; Lane2: Bovine Lung lysate; Lane3: Bovine Heart lysate; Primary Ab: 0.2µg/ml Rabbit Anti-Bovine ANXA5 Antibody; Second Ab: 0.2µg/ml HRP-Linked Caprine Anti-Rabbit IgG Polyclonal Antibody (Catalog: SAA544Rb19)

ANXA5 Antibody  
Second Ab: 2µg/mL HRP-Linked  
Caprine Anti-Rabbit IgG Polyclonal  
Antibody  
(Catalog: SAA544Rb19)

(Catalog: SAA544Rb19)

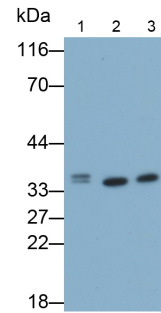


Secondary antibody only control: Used PBS instead of primary antibody, Second Ab: 2µg/mL HRP-Linked Caprine Anti-Rabbit IgG Polyclonal Antibody

Western Blot; Sample: Lane1: Bovine Testis lysate; Lane2: Hela cell lysate; Lane3: Porcine Lung lysate; Lane4: Mouse Testis lysate; Primary Ab: 0.1µg/ml Rabbit Anti-Bovine ANXA5 Antibody; Second Ab: 0.2µg/mL HRP-Linked Caprine Anti-Rabbit IgG Polyclonal Antibody (Catalog: SAA544Rb19) Selected

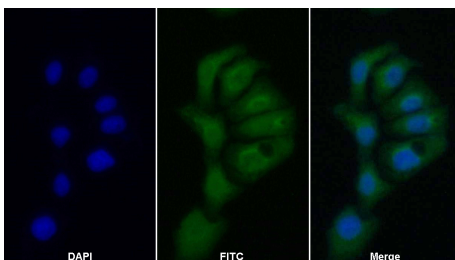
ANXA5 Antibody  
Second Ab: 2µg/mL HRP-Linked  
Caprine Anti-Rabbit IgG Polyclonal  
Antibody  
(Catalog: SAA544Rb19)

(Catalog: SAA544Rb19)



Secondary antibody only control: Used PBS instead of primary antibody, Second Ab: 2µg/mL HRP-Linked Caprine Anti-Rabbit IgG Polyclonal Antibody

Western Blot; Samples: Lane1: Bovine Cerebrum lysate; Lane2: 293T cell lysate; Lane3: HepG2 cell lysate; Primary Ab: 0.2µg/ml Rabbit Anti-Bovine ANXA5 Antibody; Second Ab: 0.2µg/ml HRP-Linked Caprine Anti-Rabbit IgG Polyclonal Antibody (Catalog: SAA544Rb19)



FITC staining on IF;

Samples: Human Hela cell;

Primary Ab: 20µg/ml Rabbit Anti-Bovine

ANXA5 Antibody

Second Ab: 1.5µg/ml FITC-Linked

Caprine Anti-Rabbit IgG Polyclonal

Antibody

(Catalog: SAA544Rb18)

### **[ IMPORTANT NOTE ]**

The kit is designed for research use only, we will not be responsible for any issue if the kit was used in clinical diagnostic or any other procedures.