

**PAA259Ga01**

**Polyclonal Antibody to Annexin V (ANXA5)**

**Organism Species: *Chicken (Gallus)***

***Instruction manual***

FOR RESEARCH USE ONLY

NOT FOR USE IN CLINICAL DIAGNOSTIC PROCEDURES

---

13th Edition (Revised in Aug, 2023)

**[ PROPERTIES ]**

**Source:** Polyclonal antibody preparation

**Host:** Rabbit

**Purification:** Antigen-specific affinity chromatography followed by Protein A affinity chromatography

**Traits:** Liquid

**Concentration:** 0.5mg/mL

**UOM:** 100µL

**Cross Reactivity:** Human;Mouse;Cavia;Porcine;Bovine

**Applications:** WB

**[ IMMUNOGEN ]**

**Immunogen:** Recombinant ANXA5 (Met1~Glu321 (Accession # P17153)) expressed in *E.coli*

**Accession No.:** RPA259Ga01

**[ APPLICATIONS ]**

Western blotting: 0.01-2µg/mL;

Optimal working dilutions must be determined by end user.

**[ FORMULATION ]**

**Form & Buffer:** Supplied as solution form in PBS, pH7.4, containing 0.02% NaN<sub>3</sub>, 50% glycerol.

**[ STORAGE AND STABILITY ]**

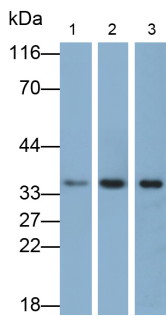
**Storage:** Avoid repeated freeze/thaw cycles.

Store at 4°C for frequent use.

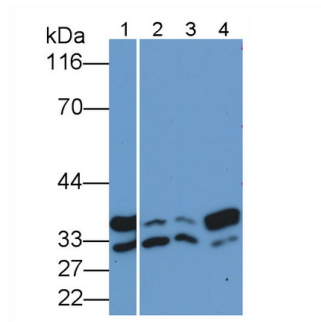
Aliquot and store at -20°C for 24 months.

**Stability Test:** The thermal stability is described by the loss rate. The loss rate was determined by accelerated thermal degradation test, that is, incubate the protein at 37°C for 48h, and no obvious degradation and precipitation were observed. The loss rate is less than 5% within the expiration date under appropriate storage condition.

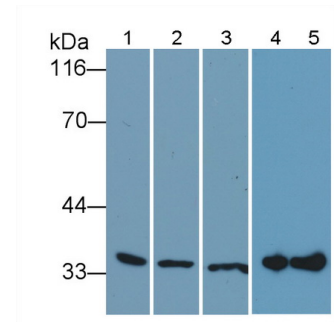
**[ IDENTIFICATION ]**



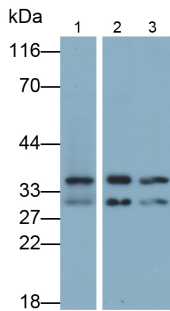
Western Blot; Samples: Lane1: Mouse Liver lysate; Lane2: HUH7 cell lysate; Lane3: Hela cell lysate; Primary Ab: 0.02µg/ml Rabbit Anti-Gallus ANXA5 Antibody Second Ab: 0.2µg/ml HRP-Linked Caprine Anti-Rabbit IgG Polyclonal Antibody (Catalog: SAA544Rb19)



Western Blot; Sample: Lane1: Gallus Heart lysate; Lane2: A431 cell lysate; Lane3: Hela cell lysate; Lane4: Bovine Testis lysate Primary Ab: 0.02ug/ml Rabbit Anti-Gallus ANXA5 Antibody Second Ab: 0.2µg/mL HRP-Linked Caprine Anti-Rabbit IgG Polyclonal Antibody (Catalog: SAA544Rb19)



Western Blot; Sample: Lane1: Porcine Lung lysate; Lane2: Mouse Lung lysate; Lane3: Cavia Lung lysate; Lane4: Gallus Liver lysate; Lane5: Gallus Lung lysate Primary Ab: 0.02ug/ml Rabbit Anti-Gallus ANXA5 Antibody Second Ab: 0.2µg/mL HRP-Linked Caprine Anti-Rabbit IgG Polyclonal Antibody (Catalog: SAA544Rb19)



Western Blot; Samples: Lane1: Porcine Liver lysate; Lane2: A431 cell lysate; Lane3: 293T cell lysate; Primary Ab: 0.02µg/ml Rabbit Anti-Gallus ANXA5 Antibody Second Ab: 0.2µg/ml HRP-Linked Caprine Anti-Rabbit IgG Polyclonal Antibody (Catalog: SAA544Rb19)

**[ IMPORTANT NOTE ]**

The kit is designed for research use only, we will not be responsible for any issue if the kit was used in clinical diagnostic or any other procedures.