

**PAC285Mu01**

**Polyclonal Antibody to Anterior Gradient 2 (AGR2)**

**Organism Species: *Mus musculus* (Mouse)**

***Instruction manual***

FOR RESEARCH USE ONLY

NOT FOR USE IN CLINICAL DIAGNOSTIC PROCEDURES

---

13th Edition (Revised in Aug, 2023)

### [ **PROPERTIES** ]

**Source:** Polyclonal antibody preparation

**Host:** Rabbit

**Purification:** Antigen-specific affinity chromatography followed by Protein A affinity chromatography

**Traits:** Liquid

**Concentration:** 0.5mg/mL

**UOM:** 10µL

**Cross Reactivity:** Rat

**Applications:** WB; IHC; ICC/IF

### [ **IMMUNOGEN** ]

**Immunogen:** Recombinant AGR2 (Lys21~Leu175) expressed in *E.coli*

**Accession No.:** RPC285Mu01

### [ **APPLICATIONS** ]

Western blotting: 0.01-5µg/mL;

Immunohistochemistry: 5-20µg/mL;

Immunofluorescence: 5-20µg/mL;

Optimal working dilutions must be determined by end user.

### [ **FORMULATION** ]

**Form & Buffer:** Supplied as solution form in PBS, pH7.4, containing 0.02% NaN<sub>3</sub>, 50% glycerol.

### [ **STORAGE AND STABILITY** ]

**Storage:** Avoid repeated freeze/thaw cycles.

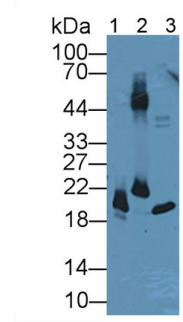
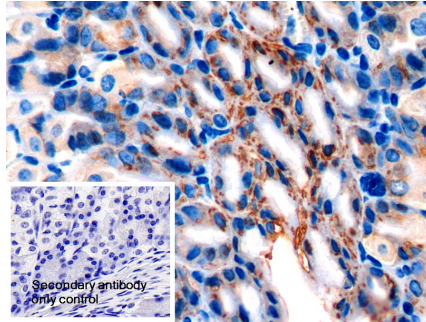
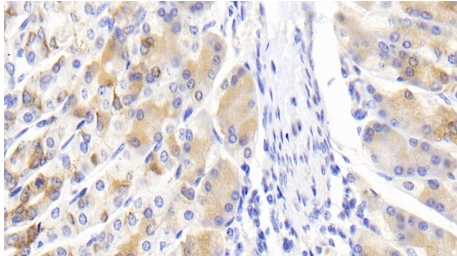
Store at 4°C for frequent use.

Aliquot and store at -20°C for 24 months.

**Stability Test:** The thermal stability is described by the loss rate. The loss rate was determined by accelerated thermal degradation test, that is, incubate the protein at 37°C for 48h, and no

obvious degradation and precipitation were observed. The loss rate is less than 5% within the expiration date under appropriate storage condition.

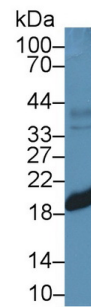
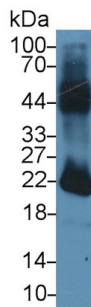
**[ IDENTIFICATION ]**



DAB staining on IHC-P; Samples:  
 Mouse Stomach Tissue; Primary Ab:  
 10µg/ml Rabbit Anti-Mouse AGR2  
 Antibody Second Ab: 2µg/mL HRP-  
 Linked Caprine Anti-Rabbit IgG  
 Polyclonal Antibody (Catalog:  
 SAA544Rb19)

DAB staining on IHC-P;  
 Sample: Mouse Stomach Tissue  
 Primary Ab: 10µg/ml Rabbit Anti-Mouse  
 AGR2 Antibody  
 Control: Used PBS instead of primary  
 antibody  
 Second Ab: 2µg/ml HRP-Linked  
 Caprine Anti-Rabbit IgG Polyclonal  
 Antibody  
 (Catalog: SAA544Rb19)

Western Blot; Sample: Lane1: Mouse  
 Stomach lysate; Lane2: Mouse Testis  
 lysate; Lane3: Rat Small intestine  
 lysate  
 Primary Ab: 2µg/mL Rabbit Anti-Mouse  
 AGR2 Antibody  
 Second Ab: 0.2µg/mL HRP-Linked  
 Caprine Anti-Rabbit IgG Polyclonal  
 Antibody  
 (Catalog: SAA544Rb19)



Western Blot; Sample: Mouse Stomach  
 lysate;  
 Primary Ab: 5µg/ml Rabbit Anti-Mouse  
 AGR2 Antibody  
 Second Ab: 0.2µg/mL HRP-Linked  
 Caprine Anti-Rabbit IgG Polyclonal  
 Antibody

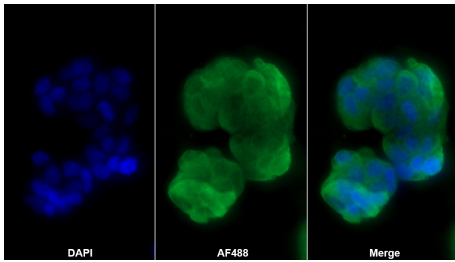
Western Blot; Sample: Mouse Testis  
 lysate;  
 Primary Ab: 5µg/ml Rabbit Anti-Mouse  
 AGR2 Antibody  
 Second Ab: 0.2µg/mL HRP-Linked  
 Caprine Anti-Rabbit IgG Polyclonal  
 Antibody

Western Blot; Sample: Rat Small  
 intestine lysate;  
 Primary Ab: 5µg/ml Rabbit Anti-Mouse  
 AGR2 Antibody  
 Second Ab: 0.2µg/mL HRP-Linked  
 Caprine Anti-Rabbit IgG Polyclonal  
 Antibody

(Catalog: SAA544Rb19)

(Catalog: SAA544Rb19)

(Catalog: SAA544Rb19)



AF488 staining on IF;

Sample: MCF7 cell

Primary Ab: 20µg/ml Rabbit Anti-Mouse

AGR2 Antibody

Second Ab: 2µg/ml AF488-Linked

Caprine Anti-Rabbit IgG Polyclonal

Antibody

(Catalog: SAA544Rb11)

### [ **IMPORTANT NOTE** ]

The kit is designed for research use only, we will not be responsible for any issue if the kit was used in clinical diagnostic or any other procedures.