

**PAB120Hu01**

**Polyclonal Antibody to Arginase (ARG)**

**Organism Species: *Homo sapiens (Human)***

***Instruction manual***

FOR RESEARCH USE ONLY

NOT FOR USE IN CLINICAL DIAGNOSTIC PROCEDURES

---

13th Edition (Revised in Aug, 2023)

### **[ PROPERTIES ]**

**Source:** Polyclonal antibody preparation

**Host:** Rabbit

**Purification:** Antigen-specific affinity chromatography followed by Protein A affinity chromatography

**Traits:** Liquid

**Concentration:** 0.33mg/mL

**UOM:** 100µL

**Cross Reactivity:** Mouse;Rat;Porcine

**Applications:** WB; IHC

### **[ IMMUNOGEN ]**

**Immunogen:** Recombinant ARG (Met1~Lys322) expressed in *E.coli*

**Accession No.:** RPB120Hu01

### **[ APPLICATIONS ]**

Western blotting: 0.01-2µg/mL;

Immunohistochemistry: 5-20µg/mL;

Optimal working dilutions must be determined by end user.

### **[ FORMULATION ]**

**Form & Buffer:** Supplied as solution form in 0.01M PBS, pH7.4, containing 0.05% Proclin-300, 50% glycerol.

### **[ STORAGE AND STABILITY ]**

**Storage:** Avoid repeated freeze/thaw cycles.

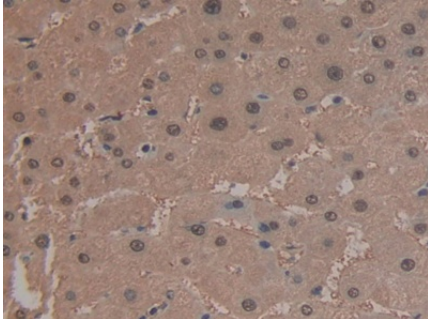
Store at 4°C for frequent use.

Aliquot and store at -20°C for 24 months.

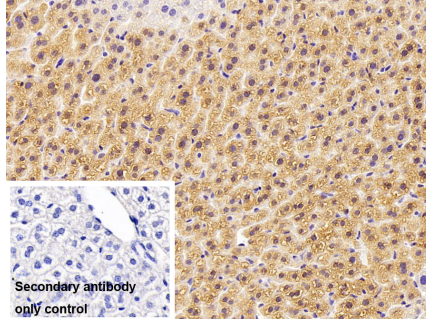
**Stability Test:** The thermal stability is described by the loss rate. The loss rate was determined by accelerated thermal degradation test, that is, incubate the protein at 37°C for 48h, and no obvious degradation and precipitation were observed. The loss rate is less than 5% within the

expiration date under appropriate storage condition.

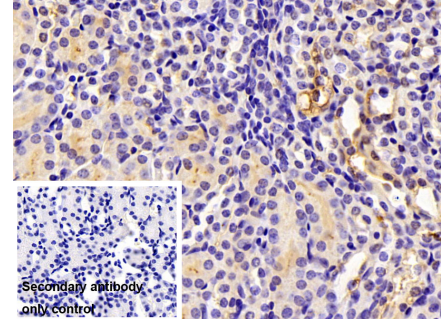
**[ IDENTIFICATION ]**



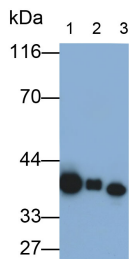
DAB staining on IHC-P; Samples:  
Human Liver Tissue; Primary Ab:  
20µg/ml Rabbit Anti-Human ARG  
Antibody Second Ab: 2µg/mL HRP-  
Linked Caprine Anti-Rabbit IgG  
Polyclonal Antibody (Catalog:  
SAA544Rb19)



DAB staining on IHC-P;  
Sample: Mouse Liver Tissue  
Primary Ab: 10µg/ml Rabbit Anti-  
Human Arg Antibody  
Control: Used PBS instead of primary  
antibody  
Second Ab: 2?g/ml HRP-Linked  
Caprine Anti-Rabbit IgG Polyclonal  
Antibody  
(Catalog: SAA544Rb19)



DAB staining on IHC-P;  
Sample: Mouse Kidney Tissue  
Primary Ab: 10µg/ml Rabbit Anti-  
Human Arg Antibody  
Control: Used PBS instead of primary  
antibody  
Second Ab: 2?g/ml HRP-Linked  
Caprine Anti-Rabbit IgG Polyclonal  
Antibody  
(Catalog: SAA544Rb19)



Western Blot; Samples: Lane1: Rat  
Liver lysate; Lane2: Mouse Liver lysate;  
Lane3: Porcine Liver lysate;  
Primary Ab: 0.01µg/ml Rabbit Anti-  
Human Arg Antibody  
Second Ab: 0.2?g/ml HRP-Linked  
Caprine Anti-Rabbit IgG Polyclonal  
Antibody  
(Catalog: SAA544Rb19)

**[ IMPORTANT NOTE ]**

The kit is designed for research use only, we will not be responsible for any issue if the kit was used in clinical diagnostic or any other procedures.