

**PAE582Hu01**

**Polyclonal Antibody to B-Cell CLL/Lymphoma 2 Like Protein (Bcl2L)**

**Organism Species: *Homo sapiens (Human)***

***Instruction manual***

FOR RESEARCH USE ONLY

NOT FOR USE IN CLINICAL DIAGNOSTIC PROCEDURES

---

13th Edition (Revised in Aug, 2023)

**[ PROPERTIES ]**

**Source:** Polyclonal antibody preparation

**Host:** Rabbit

**Purification:** Antigen-specific affinity chromatography followed by Protein A affinity chromatography

**Traits:** Liquid

**Concentration:** 0.5mg/mL

**UOM:** 100µL

**Cross Reactivity:** Mouse;Rat;Porcine

**Applications:** WB; IHC; ICC/IF; FCM

**[ IMMUNOGEN ]**

**Immunogen:** Recombinant Bcl2L (Ser2~Arg212) expressed in *E.coli*

**Accession No.:** RPE582Hu01

**[ APPLICATIONS ]**

Western blotting: 0.01-3?g/mL;

Immunohistochemistry: 5-30?g/mL;

Immunofluorescence: 5-30?g/mL;

Flow cytometry: 20?g/mL;

Optimal working dilutions must be determined by end user.

**[ FORMULATION ]**

**Form & Buffer:** Supplied as solution form in PBS, pH7.4, containing 0.02% NaN<sub>3</sub>, 50% glycerol.

**[ STORAGE AND STABILITY ]**

**Storage:** Avoid repeated freeze/thaw cycles.

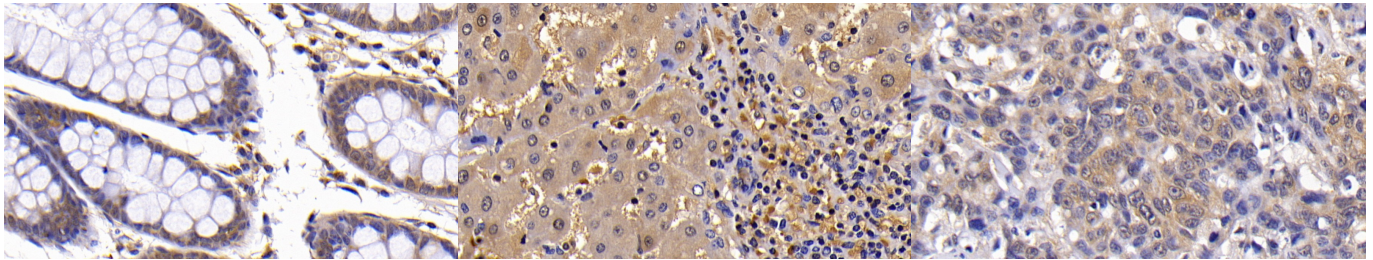
Store at 4°C for frequent use.

Aliquot and store at -20°C for 24 months.

**Stability Test:** The thermal stability is described by the loss rate. The loss rate was determined

by accelerated thermal degradation test, that is, incubate the protein at 37°C for 48h, and no obvious degradation and precipitation were observed. The loss rate is less than 5% within the expiration date under appropriate storage condition.

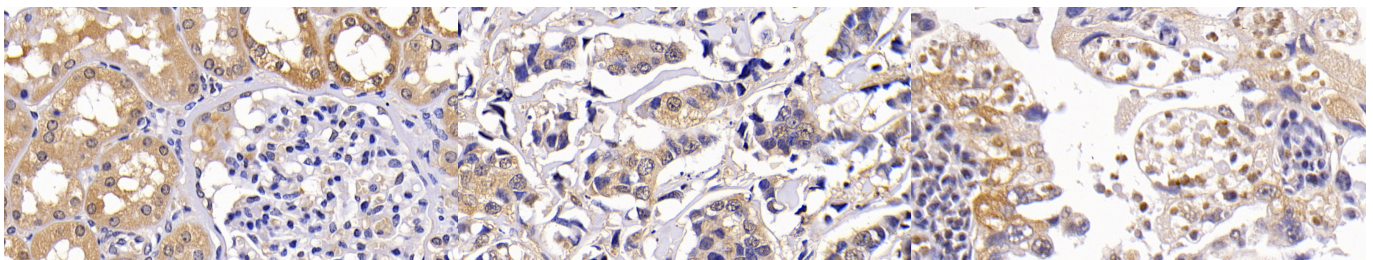
**[ IDENTIFICATION ]**



DAB staining on IHC-P; Samples: Human Colon Tissue; Primary Ab: 30ug/ml Rabbit Anti-Human Bcl2L Antibody Second Ab: 2µg/mL HRP-Linked Caprine Anti-Rabbit IgG Polyclonal Antibody (Catalog: SAA544Rb19)

DAB staining on IHC-P; Samples: Human Liver Cirrhosis Tissue; Primary Ab: 30ug/ml Rabbit Anti-Human Bcl2L Antibody Second Ab: 2µg/mL HRP-Linked Caprine Anti-Rabbit IgG Polyclonal Antibody (Catalog: SAA544Rb19)

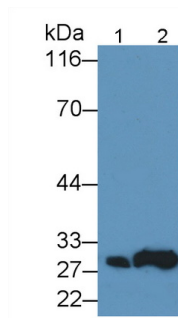
DAB staining on IHC-P; Samples: Human Lymphoma Tissue; Primary Ab: 30ug/ml Rabbit Anti-Human Bcl2L Antibody Second Ab: 2µg/mL HRP-Linked Caprine Anti-Rabbit IgG Polyclonal Antibody (Catalog: SAA544Rb19)



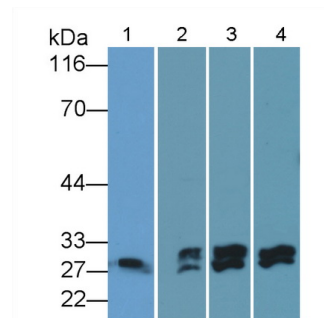
DAB staining on IHC-P; Samples: Human Kidney Tissue; Primary Ab: 30ug/ml Rabbit Anti-Human Bcl2L Antibody Second Ab: 2µg/mL HRP-Linked Caprine Anti-Rabbit IgG Polyclonal Antibody (Catalog: SAA544Rb19)

DAB staining on IHC-P; Samples: Human Breast cancer Tissue; Primary Ab: 30ug/ml Rabbit Anti-Human Bcl2L Antibody Second Ab: 2µg/mL HRP-Linked Caprine Anti-Rabbit IgG Polyclonal Antibody (Catalog: SAA544Rb19)

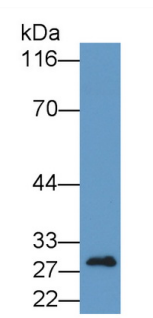
DAB staining on IHC-P; Samples: Human Lung cancer Tissue; Primary Ab: 30ug/ml Rabbit Anti-Human Bcl2L Antibody Second Ab: 2µg/mL HRP-Linked Caprine Anti-Rabbit IgG Polyclonal Antibody (Catalog: SAA544Rb19)



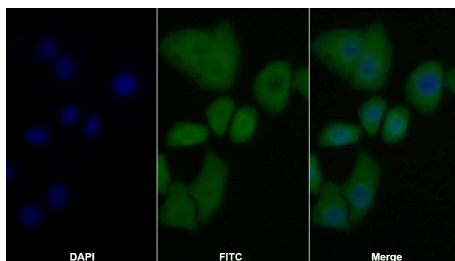
Western Blot; Sample: Lane1: K562 cell lysate; Lane2: 3T3-L1 cell lysate  
 Primary Ab: 0.2ug/ml Rabbit Anti-Human Bcl2L Antibody  
 Second Ab: 0.2µg/mL HRP-Linked Caprine Anti-Rabbit IgG Polyclonal Antibody  
 (Catalog: SAA544Rb19)



Western Blot; Sample: Lane1: Rat Cerebrum lysate; Lane2: Porcine Cerebrum lysate; Lane3: Mouse Cerebrum lysate; Lane4: Mouse Placenta lysate  
 Primary Ab: 1ug/ml Rabbit Anti-Human Bcl2L Antibody  
 Second Ab: 0.2µg/mL HRP-Linked Caprine Anti-Rabbit IgG Polyclonal Antibody  
 (Catalog: SAA544Rb19)

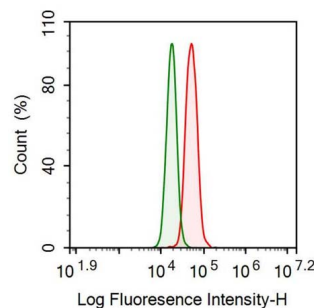


Western Blot; Sample: Rat Placenta lysate  
 Primary Ab: 0.4ug/ml Rabbit Anti-Human Bcl2L Antibody  
 Second Ab: 0.2µg/mL HRP-Linked Caprine Anti-Rabbit IgG Polyclonal Antibody  
 (Catalog: SAA544Rb19)



FITC staining on IF;

Samples: Human Hela cell;  
 Primary Ab: 20µg/ml Rabbit Anti-Human Bcl2L Antibody  
 Second Ab: 1.5µg/ml FITC-Linked Caprine Anti-Rabbit IgG Polyclonal Antibody  
 (Catalog: SAA544Rb18)



Human A431 cell was fixed with 2% paraformaldehyde (10 min), permeabilised with 0.1% BSA-Triton X-100, then stained with 20µg/ml rabbit Anti-human Bcl2L Polyclonal Antibody (Catalog PAE582Hu01, red histogram) or Isotype control antibody (Catalog IS067-Rb01, green histogram), followed by 1µg/ml FITC-conjugated Anti-rabbit IgG Secondary Antibody (Catalog

SAA544Rb18).

**[ IMPORTANT NOTE ]**

The kit is designed for research use only, we will not be responsible for any issue if the kit was used in clinical diagnostic or any other procedures.