

PAB343Mu01

Polyclonal Antibody to Bcl2 Associated X Protein (Bax)

Organism Species: *Mus musculus* (Mouse)

Instruction manual

FOR RESEARCH USE ONLY

NOT FOR USE IN CLINICAL DIAGNOSTIC PROCEDURES

13th Edition (Revised in Aug, 2023)

[PROPERTIES]

Source: Polyclonal antibody preparation

Host: Rabbit

Purification: Antigen-specific affinity chromatography followed by Protein A affinity chromatography

Traits: Liquid

Concentration: 0.5mg/mL

UOM: 10 μ L

Cross Reactivity: Human;Rat

Applications: WB; IHC; ICC/IF

[IMMUNOGEN]

Immunogen: Recombinant Bax (Met1~Trp158) expressed in *E.coli*

Accession No.: RPB343Mu01

[APPLICATIONS]

Western blotting: 0.01-2 μ g/mL;

Immunohistochemistry: 5-20 μ g/mL;

Immunofluorescence: 5-20 μ g/mL;

Optimal working dilutions must be determined by end user.

[FORMULATION]

Form & Buffer: Supplied as solution form in PBS, pH7.4, containing 0.02% NaN₃, 50% glycerol.

[STORAGE AND STABILITY]

Storage: Avoid repeated freeze/thaw cycles.

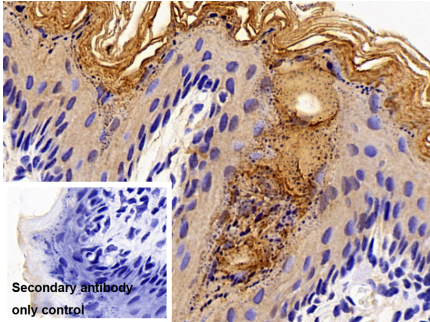
Store at 4°C for frequent use.

Aliquot and store at -20°C for 24 months.

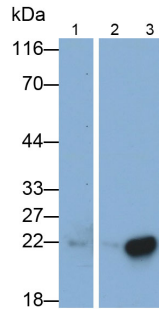
Stability Test: The thermal stability is described by the loss rate. The loss rate was determined by accelerated thermal degradation test, that is, incubate the protein at 37°C for 48h, and no

obvious degradation and precipitation were observed. The loss rate is less than 5% within the expiration date under appropriate storage condition.

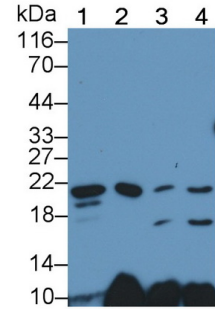
[IDENTIFICATION]



DAB staining on IHC-P; Sample: Mouse Esophagus Tissue Primary Ab: 10µg/ml Rabbit Anti-Mouse Bax Antibody Control: Used PBS instead of primary antibody Second Ab: 2?g/ml HRP-Linked Caprine Anti-Rabbit IgG Polyclonal Antibody (Catalog: SAA544Rb19)



Western Blot; Samples: Lane1: Rat Heart lysate; Lane2: Mouse Heart lysate; Lane3: RAW264.7 cell lysate; Primary Ab: 0.1µg/ml Rabbit Anti-Mouse Bax Antibody Second Ab: 0.2?g/ml HRP-Linked Caprine Anti-Rabbit IgG Polyclonal Antibody (Catalog: SAA544Rb19)



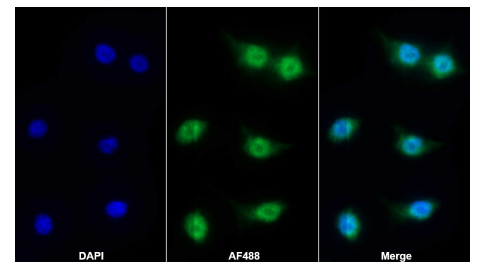
Western Blot; Sample: Lane1: Mouse Liver lysate; Lane2: Mouse Lung lysate; Lane3: 293T cell lysate; Lane4: Raji cell lysate Primary Ab: 0.2?g/ml Rabbit Anti-Mouse Bax Antibody Second Ab: 0.2µg/mL HRP-Linked Caprine Anti-Rabbit IgG Polyclonal Antibody (Catalog: SAA544Rb19)



Western Blot; Sample: Mouse Kidney lysate; Primary Ab: 1µg/ml Rabbit Anti-Mouse Bax Antibody Second Ab: 0.2µg/mL HRP-Linked Caprine Anti-Rabbit IgG Polyclonal Antibody

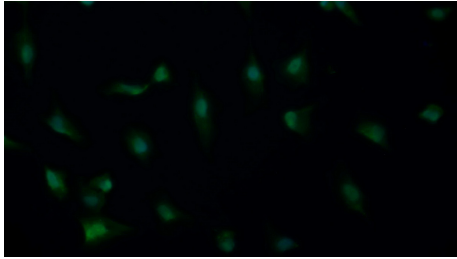


Western Blot; Sample: Mouse Serum; Primary Ab: 2µg/ml Rabbit Anti-Mouse Bax Antibody Second Ab: 0.2µg/mL HRP-Linked Caprine Anti-Rabbit IgG Polyclonal Antibody (Catalog: SAA544Rb19)



AF488 staining on IF; Sample: RAW264.7 cell Primary Ab: 20µg/ml Rabbit Anti-Mouse Bax Antibody Second Ab: 2?g/ml AF488-Linked Caprine Anti-Rabbit IgG Polyclonal Antibody (Catalog: SAA544Rb11)

(Catalog: SAA544Rb19)



FITC staining on IF;

Samples: Human A549 cell;

Primary Ab: 20?g/ml Rabbit Anti-Mouse

Bax Antibody

Second Ab: 1.5?g/ml FITC-Linked

Caprine Anti-Rabbit IgG Polyclonal

Antibody

(Catalog: SAA544Rb18)

[IMPORTANT NOTE]

The kit is designed for research use only, we will not be responsible for any issue if the kit was used in clinical diagnostic or any other procedures.