

PAA011Mu01

Polyclonal Antibody to Brain Derived Neurotrophic Factor (BDNF)

Organism Species: *Mus musculus* (Mouse)

Instruction manual

FOR RESEARCH USE ONLY

NOT FOR USE IN CLINICAL DIAGNOSTIC PROCEDURES

13th Edition (Revised in Aug, 2023)

[PROPERTIES]

Source: Polyclonal antibody preparation

Host: Rabbit

Purification: Antigen-specific affinity chromatography followed by Protein A affinity chromatography

Traits: Liquid

Concentration: 0.5mg/mL

UOM: 10 μ L

Cross Reactivity: Human

Applications: WB; ICC/IF

[IMMUNOGEN]

Immunogen: Recombinant BDNF (Glu139~Arg249) expressed in *E.coli*

Accession No.: RPA011Mu01

[APPLICATIONS]

Western blotting: 0.01-2 μ g/mL;

Immunofluorescence: 5-20 μ g/mL;

Optimal working dilutions must be determined by end user.

[FORMULATION]

Form & Buffer: Supplied as solution form in 0.01M PBS, pH7.4, containing 0.05% Proclin-300, 50% glycerol.

[STORAGE AND STABILITY]

Storage: Avoid repeated freeze/thaw cycles.

Store at 4°C for frequent use.

Aliquot and store at -20°C for 24 months.

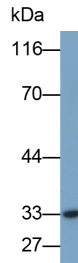
Stability Test: The thermal stability is described by the loss rate. The loss rate was determined by accelerated thermal degradation test, that is, incubate the protein at 37°C for 48h, and no obvious degradation and precipitation were observed. The loss rate is less than 5% within the

expiration date under appropriate storage condition.

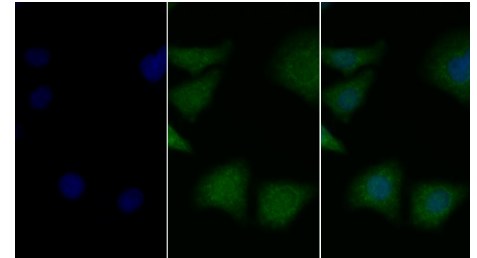
[IDENTIFICATION]



Western Blot; Sample: Mouse
Cerebellum lysate Primary Ab: 0.5µg/ml
Rabbit Anti-Mouse BDNF Antibody
Second Ab: 0.2µg/ml HRP-Linked
Caprine Anti-Rabbit IgG Polyclonal
Antibody (Catalog: SAA544Rb19)



Western Blot; Sample: SH-SY5Y cell
lysate Primary Ab: 0.5µg/ml Rabbit Anti-
Mouse BDNF Antibody
Second Ab: 0.2µg/ml HRP-Linked
Caprine Anti-Rabbit IgG Polyclonal
Antibody
(Catalog: SAA544Rb19)



FITC staining on IF;
Sample: Human HeLa cell;
Primary Ab: 20µg/ml Rabbit Anti-Mouse
BDNF Antibody
Second Ab: 2µg/ml FITC-Linked
Caprine Anti-Rabbit IgG Polyclonal
Antibody
(Catalog: SAA544Rb18)

[IMPORTANT NOTE]

The kit is designed for research use only, we will not be responsible for any issue if the kit was used in clinical diagnostic or any other procedures.