

PAB366Hu02

Polyclonal Antibody to Cadherin 5 (CDH5)

Organism Species: *Homo sapiens* (Human)

Instruction manual

FOR RESEARCH USE ONLY

NOT FOR USE IN CLINICAL DIAGNOSTIC PROCEDURES

13th Edition (Revised in Aug, 2023)

[PROPERTIES]

Source: Polyclonal antibody preparation

Host: Rabbit

Purification: Antigen-specific affinity chromatography followed by Protein A affinity chromatography

Traits: Liquid

Concentration: 0.5mg/mL

UOM: 100µL

Cross Reactivity: Mouse;Rat;Canine;Bovine

Applications: WB; ICC/IF

[IMMUNOGEN]

Immunogen: Recombinant CDH5 (Gly69~Gly391) expressed in *E.coli*

Accession No.: RPB366Hu02

[APPLICATIONS]

Western blotting: 0.01-2µg/mL;

Immunofluorescence: 5-20µg/mL;

Optimal working dilutions must be determined by end user.

[FORMULATION]

Form & Buffer: Supplied as solution form in 0.01M PBS, pH7.4, containing 0.05% Proclin-300, 50% glycerol.

[STORAGE AND STABILITY]

Storage: Avoid repeated freeze/thaw cycles.

Store at 4°C for frequent use.

Aliquot and store at -20°C for 24 months.

Stability Test: The thermal stability is described by the loss rate. The loss rate was determined by accelerated thermal degradation test, that is, incubate the protein at 37°C for 48h, and no obvious degradation and precipitation were observed. The loss rate is less than 5% within the

expiration date under appropriate storage condition.

[IDENTIFICATION]



Western Blot; Sample: Lane1: Human Lung lysate; Lane2: A549 cell lysate; Lane3: Rat Lung lysate; Lane4: Mouse Lung lysate

Primary Ab: 0.3µg/ml Rabbit Anti-Human CDH5 Antibody
 Second Ab: 0.2µg/mL HRP-Linked Caprine Anti-Rabbit IgG Polyclonal Antibody
 (Catalog: SAA544Rb19)

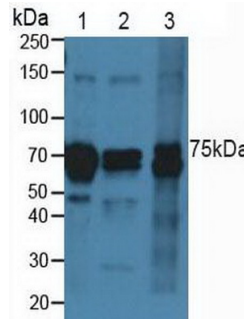
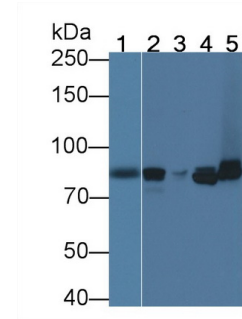
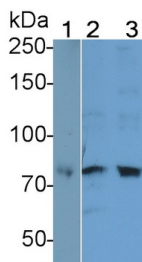


Figure. Western Blot; Sample: Lane1: A549 cell lysate; Lane2: Bovine Kidney Tissue; Lane3: Bovine Spleen Tissue.



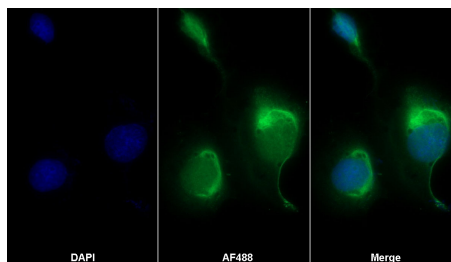
Western Blot; Sample: Lane1: A549 cell lysate; Lane2: Bovine Kidney lysate; Lane3: Bovine Cerebrum lysate; Lane4: Rat Lung lysate; Lane5: Mouse Lung lysate

Primary Ab: 2?g/ml Rabbit Anti-Human CDH5 Antibody
 Second Ab: 0.2µg/mL HRP-Linked Caprine Anti-Rabbit IgG Polyclonal Antibody
 (Catalog: SAA544Rb19) Selected



Western Blot; Sample: Lane1: Canine Lung lysate; Lane2: Canine Cerebrum lysate

Primary Ab: 0.9µg/ml Rabbit Anti-Human CDH5 Antibody
 Second Ab: 0.2µg/mL HRP-Linked Caprine Anti-Rabbit IgG Polyclonal Antibody



AF488 staining on IF;
 Sample: U2OS cell

Primary Ab: 20µg/ml Rabbit Anti-Human CDH5 Antibody
 Second Ab: 2?g/ml AF488-Linked Caprine Anti-Rabbit IgG Polyclonal Antibody
 (Catalog: SAA544Rb11)

(Catalog: SAA544Rb19) Selected

[IMPORTANT NOTE]

The kit is designed for research use only, we will not be responsible for any issue if the kit was used in clinical diagnostic or any other procedures.