

PAF897Hu01

Polyclonal Antibody to Calmodulin Like Protein 5 (CALML5)

Organism Species: *Homo sapiens (Human)*

Instruction manual

FOR RESEARCH USE ONLY

NOT FOR USE IN CLINICAL DIAGNOSTIC PROCEDURES

13th Edition (Revised in Aug, 2023)

[PROPERTIES]

Source: Polyclonal antibody preparation

Host: Rabbit

Purification: Antigen-specific affinity chromatography followed by Protein A affinity chromatography

Traits: Liquid

Concentration: 0.5mg/mL

UOM: 50µL

Cross Reactivity: Rat

Applications: WB; IHC; ICC/IF; FCM

[IMMUNOGEN]

Immunogen: Recombinant CALML5 (Met1~Glu146) expressed in *E.coli*

Accession No.: RPF897Hu01

[APPLICATIONS]

Western blotting: 0.01-2µg/mL;

Immunohistochemistry: 5-20µg/mL;

Immunofluorescence: 5-20µg/mL;

Flow cytometry: 20?g/mL;

Optimal working dilutions must be determined by end user.

[FORMULATION]

Form & Buffer: Supplied as solution form in 0.01M PBS, pH7.4, containing 0.05% Proclin-300, 50% glycerol.

[STORAGE AND STABILITY]

Storage: Avoid repeated freeze/thaw cycles.

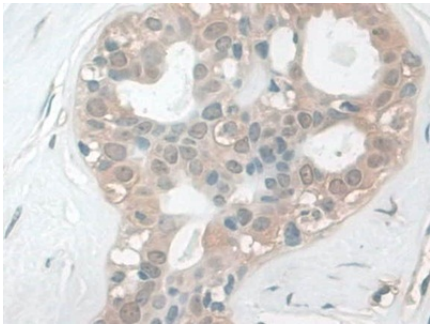
Store at 4°C for frequent use.

Aliquot and store at -20°C for 24 months.

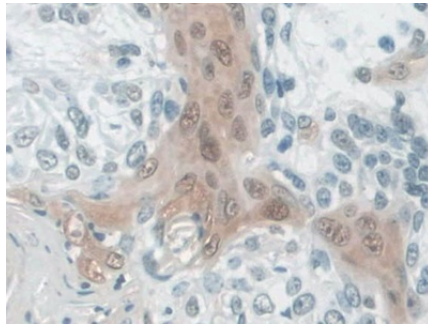
Stability Test: The thermal stability is described by the loss rate. The loss rate was determined

by accelerated thermal degradation test, that is, incubate the protein at 37°C for 48h, and no obvious degradation and precipitation were observed. The loss rate is less than 5% within the expiration date under appropriate storage condition.

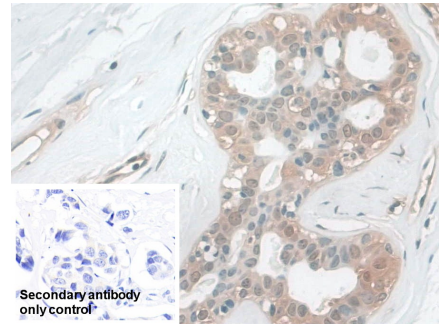
[IDENTIFICATION]



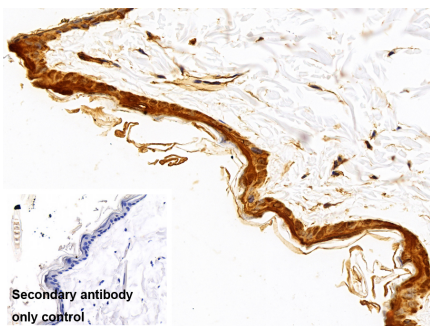
DAB staining on IHC-P; Samples: Human Breast cancer Tissue; Primary Ab: 10µg/ml Rabbit Anti-Human CALML5 Antibody Second Ab: 2µg/mL HRP-Linked Caprine Anti-Rabbit IgG Polyclonal Antibody (Catalog: SAA544Rb19)



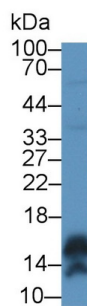
DAB staining on IHC-P; Samples: Human Skin cancer Tissue; Primary Ab: 10µg/ml Rabbit Anti-Human CALML5 Antibody Second Ab: 2µg/mL HRP-Linked Caprine Anti-Rabbit IgG Polyclonal Antibody (Catalog: SAA544Rb19)



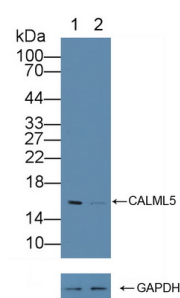
DAB staining on IHC-P; Sample: Human Breast cancer Tissue Primary Ab: 10µg/ml Rabbit Anti-Human CALML5 Antibody Control: Used PBS instead of primary antibody Second Ab: 2µg/ml HRP-Linked Caprine Anti-Rabbit IgG Polyclonal Antibody (Catalog: SAA544Rb19)



DAB staining on IHC-P; Sample: Rat Skin Tissue Primary Ab: 10µg/ml Rabbit Anti-Human CALML5 Antibody Control: Used PBS instead of primary antibody



Western Blot; Sample: Human A431 cell lysate; Primary Ab: 1µg/ml Rabbit Anti-Human CALML5 Antibody Second Ab: 0.2µg/mL HRP-Linked Caprine Anti-Rabbit IgG Polyclonal

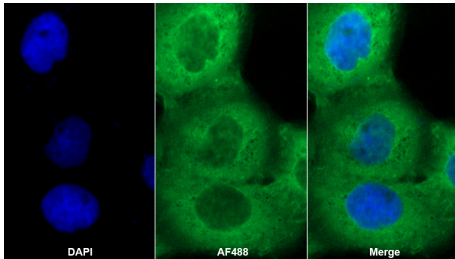


Knockout Verification: Lane 1: Wild-type A431 cell lysate; Lane 2: CALML5 knockout A431 cell lysate; Predicted MW: 16kd Observed MW: 16kd

Second Ab: 2 μ g/ml HRP-Linked
Caprine Anti-Rabbit IgG Polyclonal
Antibody
(Catalog: SAA544Rb19)

Antibody
(Catalog: SAA544Rb19)

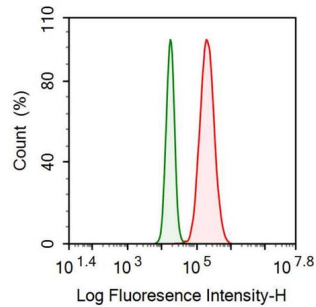
Primary Ab: 1 μ g/ml Rabbit Anti-Human
CALML5 Antibody
Second Ab: 0.2 μ g/mL HRP-Linked
Caprine Anti-Rabbit IgG Polyclonal
Antibody
(Catalog: SAA544Rb19)



AF488 staining on IF;

Sample: A431 cell

Primary Ab: 20 μ g/ml Rabbit Anti-
Human CALML5 Antibody
Second Ab: 2 μ g/ml AF488-Linked
Caprine Anti-Rabbit IgG Polyclonal
Antibody
(Catalog: SAA544Rb11)



Human A431 cell was fixed with 2%
paraformaldehyde (10 min) ,
permeabilised with 0.1% BSA-Triton
X-100, then stained with 20 μ g/ml rabbit
Anti-human CALML5 Polyclonal
Antibody (Catalog PAF897Hu01, red
histogram) or Isotype control antibody
(Catalog IS067-Rb01, green
histogram), followed by 1 μ g/ml FITC-
conjugated Anti-rabbit IgG Secondary
Antibody (Catalog SAA544Rb18).

[IMPORTANT NOTE]

The kit is designed for research use only, we will not be responsible for any issue if the kit was used in clinical diagnostic or any other procedures.