

PAM449Hu01

Polyclonal Antibody to Canopy 2 Homolog (CNPY2)

Organism Species: *Homo sapiens (Human)*

Instruction manual

FOR RESEARCH USE ONLY

NOT FOR USE IN CLINICAL DIAGNOSTIC PROCEDURES

13th Edition (Revised in Aug, 2023)

[PROPERTIES]

Source: Polyclonal antibody preparation

Host: Rabbit

Purification: Antigen-specific affinity chromatography followed by Protein A affinity chromatography

Traits: Liquid

Concentration: 0.5mg/mL

UOM: 50µL

Cross Reactivity: Mouse;Rat;Porcine

Applications: WB; IHC; ICC/IF

[IMMUNOGEN]

Immunogen: Recombinant CNPY2 (Arg21~Leu182) expressed in *E.coli*

Accession No.: RPM449Hu01

[APPLICATIONS]

Western blotting: 0.01-2µg/mL;

Immunohistochemistry: 5-20µg/mL;

Immunofluorescence: 5-20µg/mL;

Optimal working dilutions must be determined by end user.

[FORMULATION]

Form & Buffer: Supplied as solution form in 0.01M PBS, pH7.4, containing 0.05% Proclin-300, 50% glycerol.

[STORAGE AND STABILITY]

Storage: Avoid repeated freeze/thaw cycles.

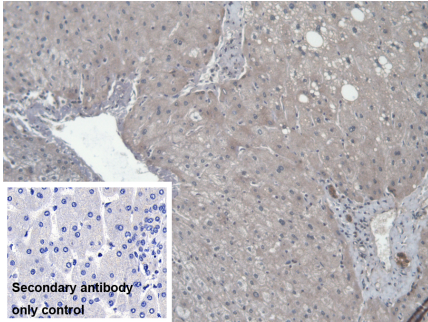
Store at 4°C for frequent use.

Aliquot and store at -20°C for 24 months.

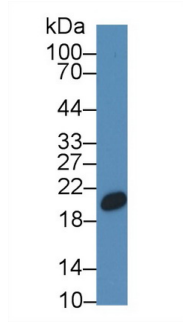
Stability Test: The thermal stability is described by the loss rate. The loss rate was determined by accelerated thermal degradation test, that is, incubate the protein at 37°C for 48h, and no

obvious degradation and precipitation were observed. The loss rate is less than 5% within the expiration date under appropriate storage condition.

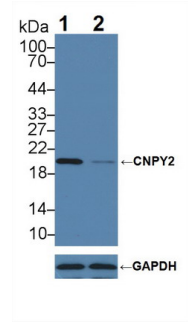
[IDENTIFICATION]



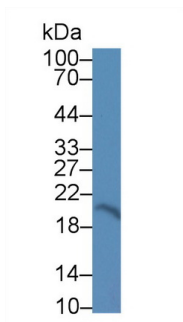
DAB staining on IHC-P; Samples: Human Liver Tissue; Primary Ab: 20µg/ml Rabbit Anti-Human CNPY2 Antibody Second Ab: 2µg/mL HRP-Linked Caprine Anti-Rabbit IgG Polyclonal Antibody (Catalog: SAA544Rb19)



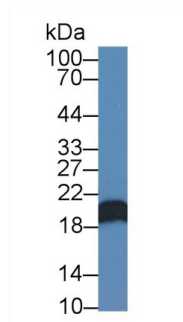
Western Blot; Sample: Porcine Liver lysate; Primary Ab: 1µg/ml Rabbit Anti-Human CNPY2 Antibody Second Ab: 0.2µg/mL HRP-Linked Caprine Anti-Rabbit IgG Polyclonal Antibody (Catalog: SAA544Rb19) Selected



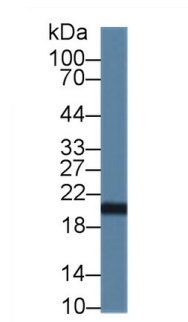
Knockout Varification: Lane 1: Wild-type MCF7 cell lysate; Lane 2: CNPY2 knockout MCF7 cell lysate; Predicted MW: 21,9kd Observed MW: 20kd Primary Ab: 1µg/ml Rabbit Anti-Human CNPY2 Antibody Second Ab: 0.2µg/mL HRP-Linked Caprine Anti-Rabbit IgG Polyclonal Antibody (Catalog: SAA544Rb19)



Western Blot; Sample: Porcine Pancreas lysate; Primary Ab: 1µg/ml Rabbit Anti-Human CNPY2 Antibody Second Ab: 0.2µg/mL HRP-Linked

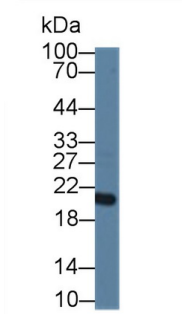


Western Blot; Sample: MCF7 cell lysate; Primary Ab: 1µg/ml Rabbit Anti-Human CNPY2 Antibody Second Ab: 0.2µg/mL HRP-Linked



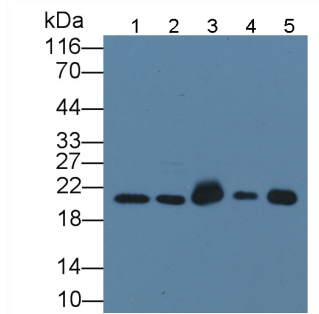
Western Blot; Sample: HepG2 cell lysate; Primary Ab: 1µg/ml Rabbit Anti-Human CNPY2 Antibody Second Ab: 0.2µg/mL HRP-Linked

Caprine Anti-Rabbit IgG Polyclonal
Antibody
(Catalog: SAA544Rb19) Selected



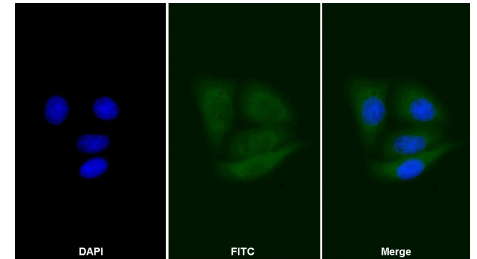
Western Blot; Sample: HeLa cell lysate;
Primary Ab: 1µg/ml Rabbit Anti-Human
CNPY2 Antibody
Second Ab: 0.2µg/mL HRP-Linked
Caprine Anti-Rabbit IgG Polyclonal
Antibody
(Catalog: SAA544Rb19) Selected

Caprine Anti-Rabbit IgG Polyclonal
Antibody
(Catalog: SAA544Rb19) Selected

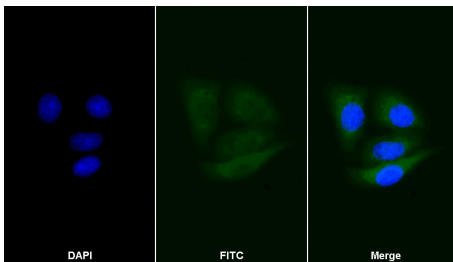


Western Blot; Sample: Lane1: HepG2
cell lysate; Lane2: HeLa cell lysate;
Lane3: Mouse Pancreas lysate; Lane4:
Porcine Liver lysate; Lane5: Rat Liver
lysate
Primary Ab: 1µg/ml Rabbit Anti-Human
CNPY2 Antibody
Second Ab: 0.2µg/mL HRP-Linked
Caprine Anti-Rabbit IgG Polyclonal
Antibody
(Catalog: SAA544Rb19)

Caprine Anti-Rabbit IgG Polyclonal
Antibody
(Catalog: SAA544Rb19) Selected



FITC staining on IF;
Samples: Human MCF7 cell;
Primary Ab: 20µg/ml Rabbit Anti-
Human CNPY2 Antibody
Second Ab: 1.5µg/ml FITC-Linked
Caprine Anti-Rabbit IgG Polyclonal
Antibody
(Catalog: SAA544Rb18)



FITC staining on IF; Sample: MCF7
cell Primary Ab: 20µg/ml Rabbit Anti-
Human CNPY2 Antibody Second Ab:
2µg/ml FITC-Linked Caprine Anti-
Rabbit IgG Polyclonal
Antibody (Catalog: SAA544Rb11)

[IMPORTANT NOTE]

The kit is designed for research use only, we will not be responsible for any issue if the kit was used in clinical diagnostic or any other procedures.